

ELBOW 90° C X C

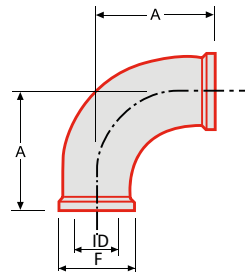
ASME BPE DT-4.1.1-3 (DT-16)

Hygienic Clamp Joint: 90-deg Elbow.



Technical information

Sizes	see table
Connections	Tri-clamp
Material	1.4404 (316L)
Finishes	Interior surfaces SF1
Certificates (st.)	3.1 material
Certificates (opt.)	2.2 surface finish



Size	A	ØID	ØF
¼"	41.3	4.57	25
⅜"	41.3	7.75	25
½"	41.3	9.4	25
¾"	41.3	15.75	25
1"	50.8	22.1	50.5
1½"	69.9	34.8	50.5
2"	88.9	47.5	64
2½"	108.0	60.2	77.5
3"	127.0	72.9	91
4"	168.3	97.4	119
6"	266.7	146.7	167