

REDUCING TEE W X C X W

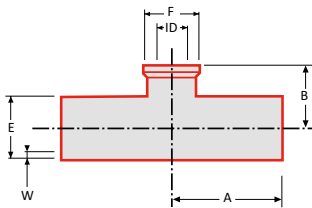
ASME BPE DT-4.1.2-7 (DT-14)

Automatic Tube Weld: Short Outlet Hygienic
Clamp, Joint Reducing Tee.



Technical information

Sizes	see table
Connections	Weld, Tri-clamp
Material	1.4404 (316L)
Finishes	Interior surf.SF1
Certificates (st.)	3.1 material
Certificates (opt.)	2.2 surface finish



Size	A	B	ØEx	Wx	ØID	ØF
¾" x ¼"	44.5	25.4	9.53	0.89	4.57	25
½" x ¼"	47.6	25.4	12.7	1.65	4.57	25
½" x ¾"	47.6	25.4	12.7	1.65	7.75	25
¾" x ¼"	50.8	25.4	19.05	1.65	4.57	25
¾" x ¾"	50.8	25.4	19.05	1.65	7.75	25
¾" x ½"	50.8	25.4	19.05	1.65	9.4	25
1" x ¼"	54.0	28.6	25.4	1.65	4.57	25
1" x ¾"	54.0	28.6	25.4	1.65	7.75	25
1" x ½"	54.0	28.6	25.4	1.65	9.4	25
1" x ¾"	54.0	28.6	25.4	1.65	15.75	25
1½" x ½"	60.3	34.9	38.1	1.65	9.4	25
1½" x ¾"	60.3	34.9	38.1	1.65	15.75	25
1½" x 1"	60.3	34.9	38.1	1.65	22.1	50.5
2" x ½"	73.0	41.3	50.8	1.65	9.4	25
2" x ¾"	73.0	41.3	50.8	1.65	15.75	25
2" x 1"	73.0	41.3	50.8	1.65	22.1	50.5
2" x 1½"	73.0	41.3	50.8	1.65	34.8	50.5
2½" x ½"	79.4	47.6	63.5	1.65	9.4	25
2½" x ¾"	79.4	47.6	63.5	1.65	15.75	25
2½" x 1"	79.4	47.6	63.5	1.65	22.1	50.5
2½" x 1½"	79.4	47.6	63.5	1.65	34.8	50.5
2½" x 2"	79.4	47.6	63.5	1.65	47.5	64
3" x ½"	85.7	54.0	76.2	1.65	9.4	25
3" x ¾"	85.7	54.0	76.2	1.65	15.75	25
3" x 1"	85.7	54.0	76.2	1.65	22.1	50.5
3" x 1½"	85.7	54.0	76.2	1.65	34.8	50.5
3" x 2"	85.7	54.0	76.2	1.65	47.5	64
3" x 2½"	85.7	54.0	76.2	1.65	60.2	77.5
4" x ½"	104.8	66.7	101.6	2.11	9.4	25
4" x ¾"	104.8	66.7	101.6	2.11	15.75	25
4" x 1"	104.8	66.7	101.6	2.11	22.1	50.5
4" x 1½"	104.8	66.7	101.6	2.11	34.8	50.5
4" x 2"	104.8	66.7	101.6	2.11	47.5	64
4" x 2½"	104.8	66.7	101.6	2.11	60.2	77.5
4" x 3"	104.8	66.7	101.6	2.11	72.9	91
6" x ½"	142.9	92.1	152.4	2.77	9.4	25
6" x ¾"	142.9	92.1	152.4	2.77	15.75	25
6" x 1"	142.9	92.1	152.4	2.77	22.1	50.5
6" x 1½"	142.9	92.1	152.4	2.77	34.8	50.5
6" x 2"	142.9	92.1	152.4	2.77	47.5	64
6" x 2½"	142.9	92.1	152.4	2.77	60.2	77.5
6" x 3"	142.9	92.1	152.4	2.77	72.9	91
6" x 4"	142.9	95.3	152.4	2.77	97.4	119