

# SHORT OUTLET TEE W X C X W

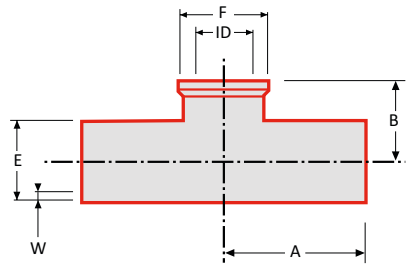
## ASME BPE DT-4.1.2-2 (DT-15)

Automatic Tube Weld: Short Outlet Hygienic Clamp Joint Tee.



### Technical information

Sizes	see table
Connections	Weld, Tri-clamp
Material	1.4404 (316L)
Finishes	Interior surfaces SF1
Certificates (st.)	3.1 material
Certificates (opt.)	2.2 surface finish



Size	A	B	ØE	W	ØID	ØF
¼"	44.5	25.4	6.53	0.89	4.57	25
⅜"	44.5	25.4	9.35	1.65	7.75	25
½"	47.6	25.4	12.7	1.65	9.4	25
¾"	50.8	28.6	19.05	1.65	15.75	25
1"	54.0	28.6	25.4	1.65	22.1	50.5
1½"	60.3	34.9	38.1	1.65	34.8	50.5
2"	73.0	41.3	50.8	1.65	47.5	64
2½"	79.4	47.6	63.5	1.65	60.2	77.5
3"	85.7	54.0	76.2	1.65	72.9	91
4"	104.8	69.9	101.6	2.11	97.4	119
6"	142.9	117.5	152.4	2.77	146.7	167