

Ferrules ASME BPE

Ferrules – Imperial

Ferrules are produced by turning from 316L stainless steel bar stock. The surface finish is available in the finishes described by the ASME.

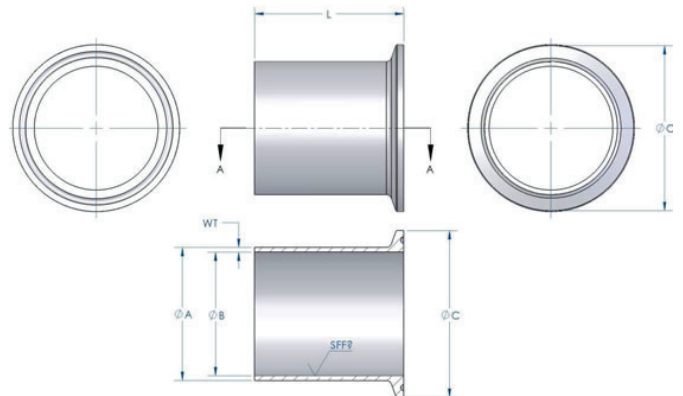
Material certification is supplied as standard and all ferrules are part marked with the material grade, mill heat number and the fittings size and name.

Ferrules can also be supplied as specials in a variety of non-standard materials such as special stainless steels, titanium, hastalloy etc.



Technical information

Sizes	see table
Connections	Tri-Clamp
Material	1.4435 LS (316L Low Sulphur)
Finishes	SFF1 – SFF6
Certificates	3.1 - Solid Bar



Nominal Size	OD ØA	ID ØB	Flange ØC	Wall WT	Length L Short	Length L Medium	Length L Long	Short Mass (kg)	Long Mass (kg)
1/4"	6.35	4.57	25.4	0.89	12.7	28.7	44.5	0.02	0.02
3/8"	9.52	7.74	25.4	0.89	12.7	28.7	44.5	0.02	0.02
1/2"	12.70	9.40	25.4	1.65	12.7	28.7	44.5	0.02	0.03
3/4"	19.05	15.75	25.4	1.65	12.7	28.7	44.5	0.02	0.04
1"	25.40	22.10	50.5	1.65	12.7	28.7	44.5	0.08	0.10
1 1/2"	38.10	34.80	50.5	1.65	12.7	28.7	44.5	0.08	0.09
2"	50.80	47.50	64.0	1.65	12.7	28.7	57.2	0.09	0.14
2 1/2"	63.50	60.20	77.5	1.65	12.7	28.7	57.2	0.11	0.18
3"	76.20	72.90	91.0	1.65	12.7	28.7	57.2	0.14	0.23
4"	101.60	97.38	119.0	2.11	15.9	28.7	57.2	0.24	0.38
6"	152.40	146.86	167.0	2.77	19.05	38.1	76.2	0.47	0.95

ules ASME BPE/02/18