

# ADAPTER TRI-CLAMP TO PUSH-ON

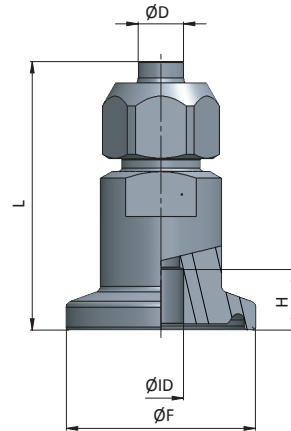
## Adapter Tri-Clamp to Push-On Connector

An unique push-on fitting for PTFE or FEP tubing with a tri-clamp connection. The ideal fitting for fluids in particular. The ease of use is mainly reflected in the simple assembly and disassembly of this fitting. The push-on fitting is produced of 316L stainless steel entirely, which leads to a guaranteed 100% traceability. The fitting is compact and meets the standards of the pharmaceutical industry.



### Technical information

Sizes	see table
Pressure	Max 25 bar
Temp. range	-20 to 200 °C
Connections	Tri-clamp, Push-on
Material	1.4404 (316L)
Finishes	Interior surfaces SF1
Certificates (st.)	3.1 material
Certificates (opt.)	2.2 surface finish



219

ØF	ØID	ØD	L	H
25	6	8	36	8
50.5	6	8	36	8

Other sizes on request



**ROMYNOX**

RX: F-B

These are standard items. We also deliver other sizes, according to ISO, DIN and SMS. For more and the latest information use the QR-code to go to the website.