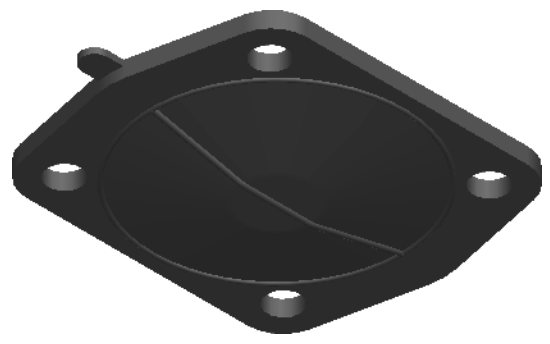
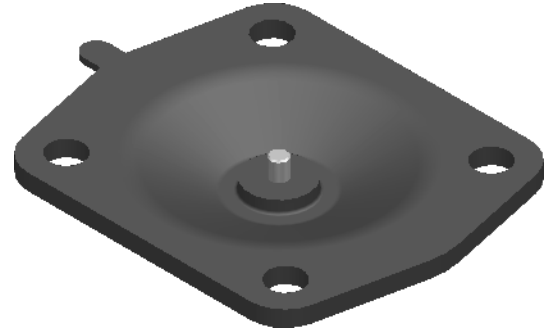


$\phi$  12.5 (4 HOLES)  
 1/4" - 20 UNC (INSERT SCREW)  
 82

REVISION HISTORY			
REV	DESCRIPTION	DATE	APPROVED



SCALE  
 1:2

Replacement Diaphragm for :-  
 OEM PART = 41285 or 46607  
 USED ON 2" (DN50) Diaphragm Valve

	NAME	DATE
DRAWN	M.MC KEON	08/21/14
CHECKED		
<b>Material - EPDM</b>		
Complies with CFR 177.2600 and Conforms to USP Class VI Biological Reactivity Tests Section #87 and #88		

DIAPHRAGM DIRECT	
TITLE <b>DD20-IE7</b>	
SIZE A	ROMYNOX
REV B	FILE NAME: DD20-IE7.dft
SCALE: 1:1	ECO:0605 SHEET 1 OF 1

Disclaimer - Diaphragm Direct® does not manufacture, represent, nor sell OEM valves or diaphragms manufactured by any other company. Diaphragm Direct® brand diaphragms are not sponsored by any other manufacturers. Any name, model, part number, brand, image, material or referral is for descriptive purposes only. Diaphragm Direct® brand replacement diaphragms are guaranteed to fit OEM equipment and meet or exceed OEM specifications. Diaphragm Direct® brand replacement diaphragms are covered by the standard Diaphragm Direct® limited product warranty.