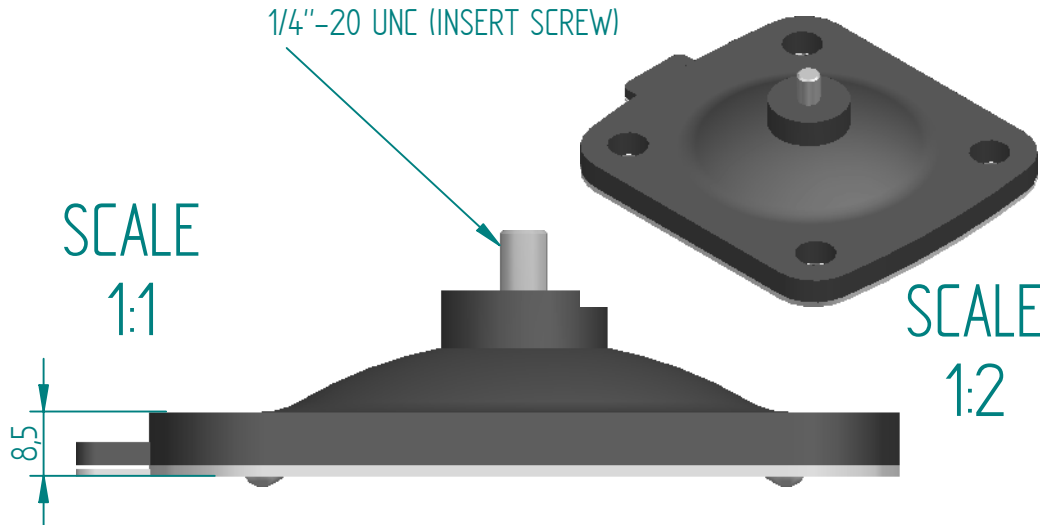


ϕ 10,5 (4 HOLES)

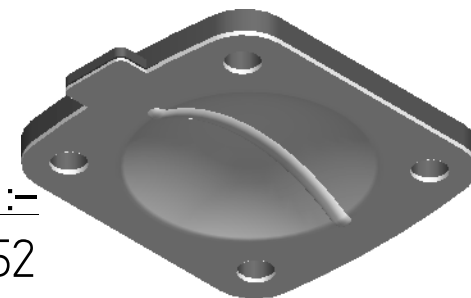
REVISION HISTORY			
REV	DESCRIPTION	DATE	APPROVED

SCALE
1:1


1/4"-20 UNC (INSERT SCREW)



SCALE
1:2



Replacement Diaphragm for :-
OEM PART NUMBER = 600040-M-52
USED ON 1.5" (DN40) Diaphragm Valve

	NAME	DATE	 DIAPHRAGM DIRECT	
DRAWN	M.MC KEON	08/29/14		
CHECKED				
Material - EPDM BACKING PTFE - DIAPHRAGM			TITLE DD15-GTFM	
Complies with CFR 177.2600 and Conforms to USP Class VI Biological Reactivity Tests Section #87 and #88			SIZE A	REV B
			FILE NAME: DD15-GTFM.dft	
			SCALE: 1 : 1	ECD:0605 SHEET 1 OF 1

Disclaimer - Diaphragm Direct® does not manufacture, represent, nor sell OEM valves or diaphragms manufactured by any other company. Diaphragm Direct® brand diaphragms are not sponsored by any other manufacturers. Any name, model, part number, brand, image, material or referral is for descriptive purposes only. Diaphragm Direct® brand replacement diaphragms are guaranteed to fit OEM equipment and meet or exceed OEM specifications. Diaphragm Direct® brand replacement diaphragms are covered by the standard Diaphragm Direct® limited product warranty.