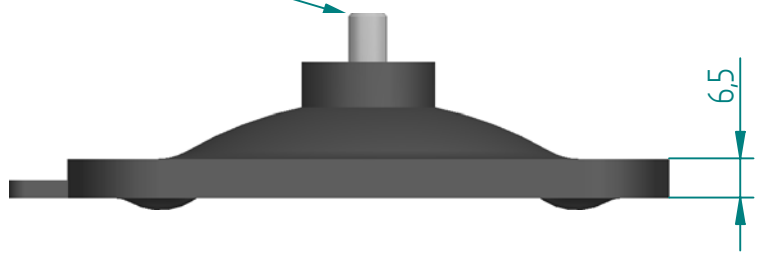
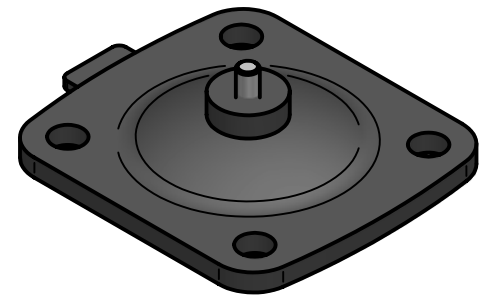


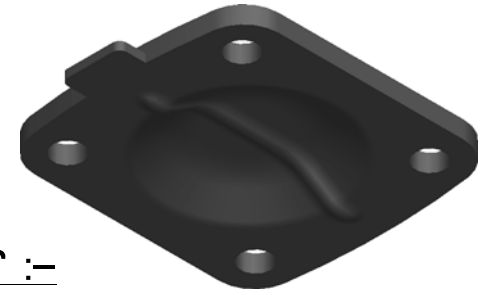
1/4" - Whitworth (INSERT SCREW)



Ø 11 (4 Holes)



SCALE
1:2



Replacement Diaphragm for :-
 Grade : FPM/FKM - FDA
 USED ON 1.5" (DN40) Diaphragm Valve

	NAME	DATE
DRAWN	M.MC KEON	01/21/15
CHECKED		

Material - FPM/FKM

FDA Compliance :
21 CFR 177.2600



TITLE
DD15-SFPM

SIZE A	ROMYNOX	REV B
-----------	----------------	----------

FILE NAME: DD15-SFPM.dft

SCALE: 1:1.25	ECO:0605	SHEET 1 OF 1
---------------	----------	--------------

Disclaimer - Diaphragm Direct® does not manufacture, represent, nor sell OEM valves or diaphragms manufactured by any other company. Diaphragm Direct® brand diaphragms are not sponsored by any other manufacturers. Any name, model, part number, brand, image, material or referral is for descriptive purposes only. Diaphragm Direct® brand replacement diaphragms are guaranteed to fit OEM equipment and meet or exceed OEM specifications. Diaphragm Direct® brand replacement diaphragms are covered by the standard Diaphragm Direct® limited product warranty.