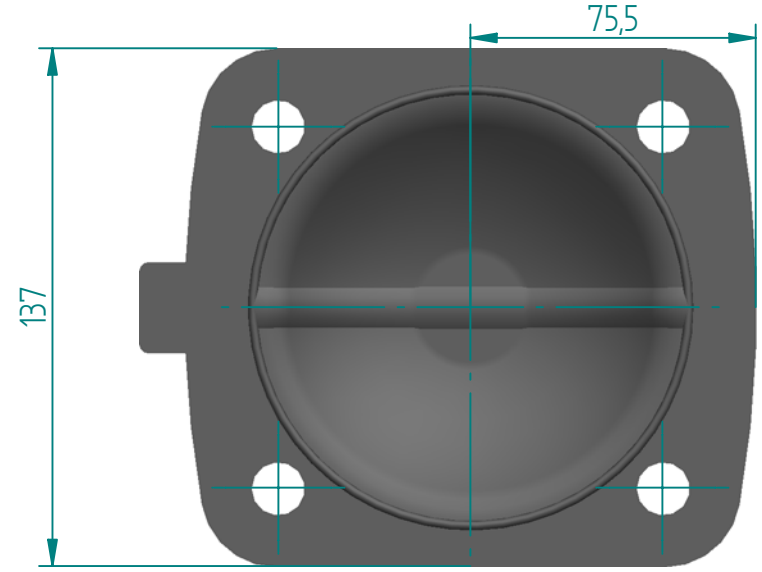
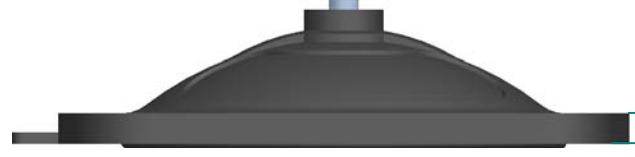
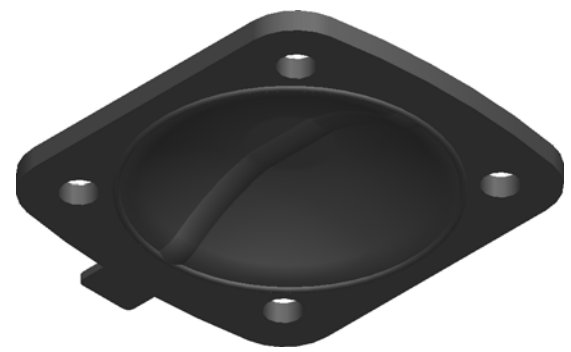
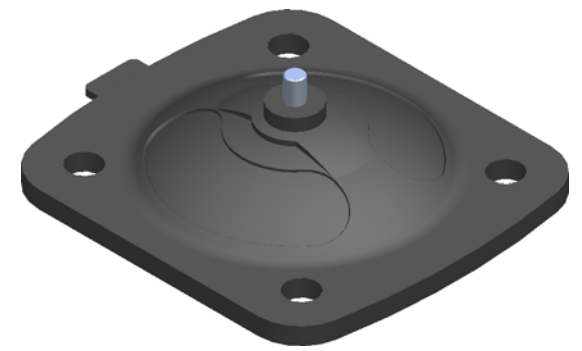


5/16" - Whitworth (INSERT SCREW)



REVISION HISTORY			
REV	DESCRIPTION	DATE	APPROVED



Scale
1:2.5

Replacement Diaphragm for :-
 Grade : FPM/FKM - FDA
 USED ON 2.5" (DN65) Diaphragm Valve

NAME	DATE	
DRAWN M.MC KEON	01/21/15	
CHECKED		
Material - FPM/FKM		TITLE DD25-SFPM
FDA Compliance : 21 CFR 177.2600		SIZE A REV B
FILE NAME: DD25-SFPM.dft		SCALE: 1:2 (mm) ECO:0605 SHEET 1 OF 1

Disclaimer - Diaphragm Direct® does not manufacture, represent, nor sell OEM valves or diaphragms manufactured by any other company. Diaphragm Direct® brand diaphragms are not sponsored by any other manufacturers. Any name, model, part number, brand, image, material or referral is for descriptive purposes only. Diaphragm Direct® brand replacement diaphragms are guaranteed to fit OEM equipment and meet or exceed OEM specifications. Diaphragm Direct® brand replacement diaphragms are covered by the standard Diaphragm Direct® limited product warranty.