



Ezi-Flow CSV Bottle Discharging

Operating Instructions

Follow these instructions when using the
Ezi-Flow CSV High Containment Transfer System



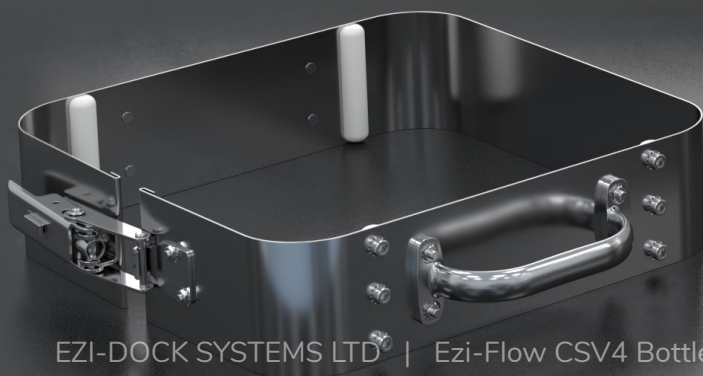
VERSION 1.0
DATE PRODUCED 14/03/22

1

- During this procedure
- you will need:

- 1 Pre-filled Pharma process bottle with pre fitted Ezi-Grip shut off clamp and red tamper evident Security Tag.
- 2 CSV Active Transfer Port
- 3 Pharma Process Bottle lifting clamp (optional)

In addition, a number of mobile or benchtop filling stands are also available to make the discharge process easier.





2:

Carefully load the filled Bottle, with its bag clamp & tamper evident security tag in place, onto the support stand

EZI-DOCK SYSTEMS LTD
Ezi-Flow CSV
Bottle Discharging

Pharma Process Bottle
lifting clamp (optional)



3:

Lifting aids can be utilised to help with the manual handling of the Filled Bottle.

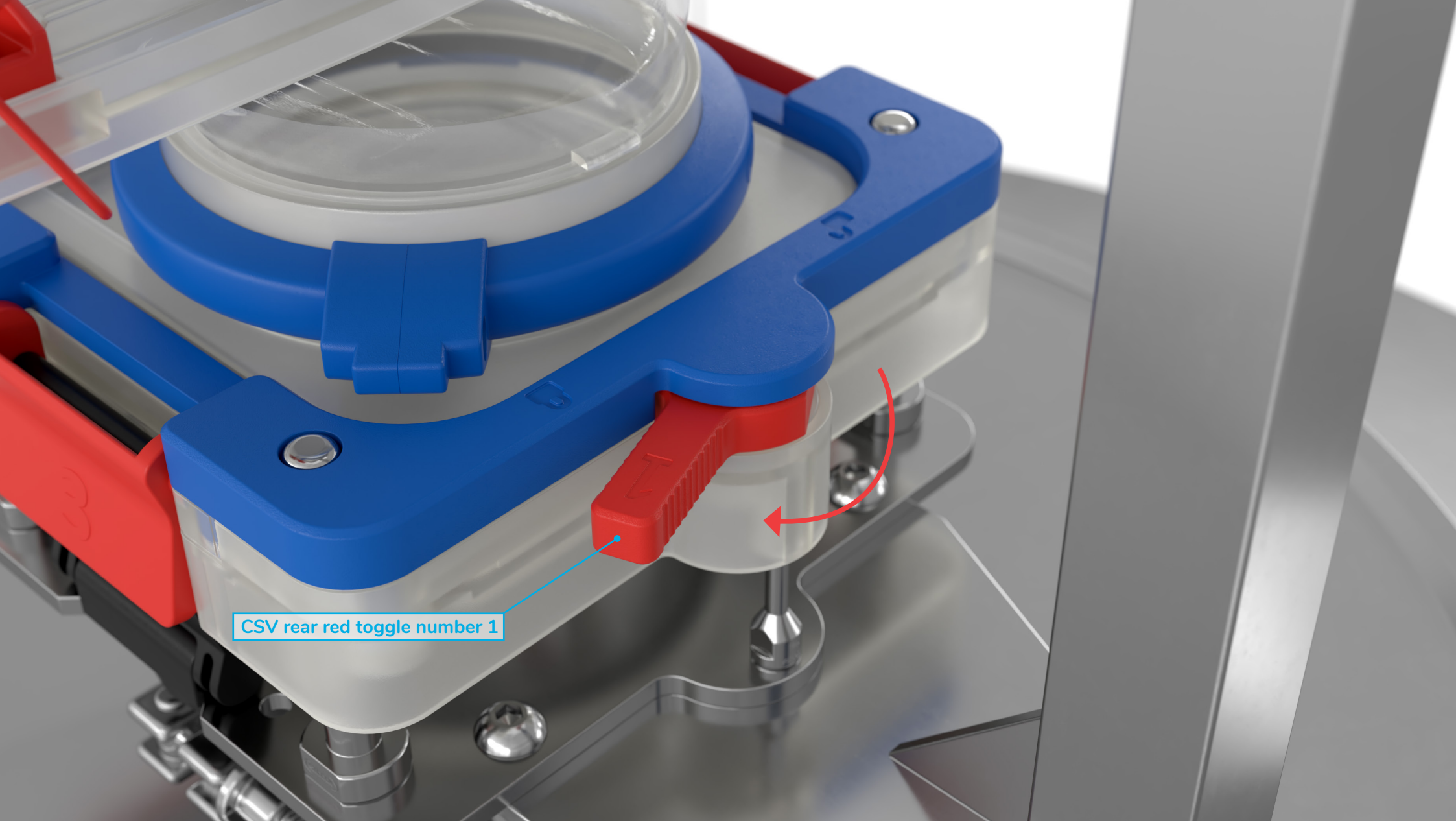
EZI-DOCK SYSTEMS LTD
Ezi-Flow CSV
Bottle Discharging



4:

Next, insert the front of the passive under the lip of the active, and then push the rear of the passive down flat.

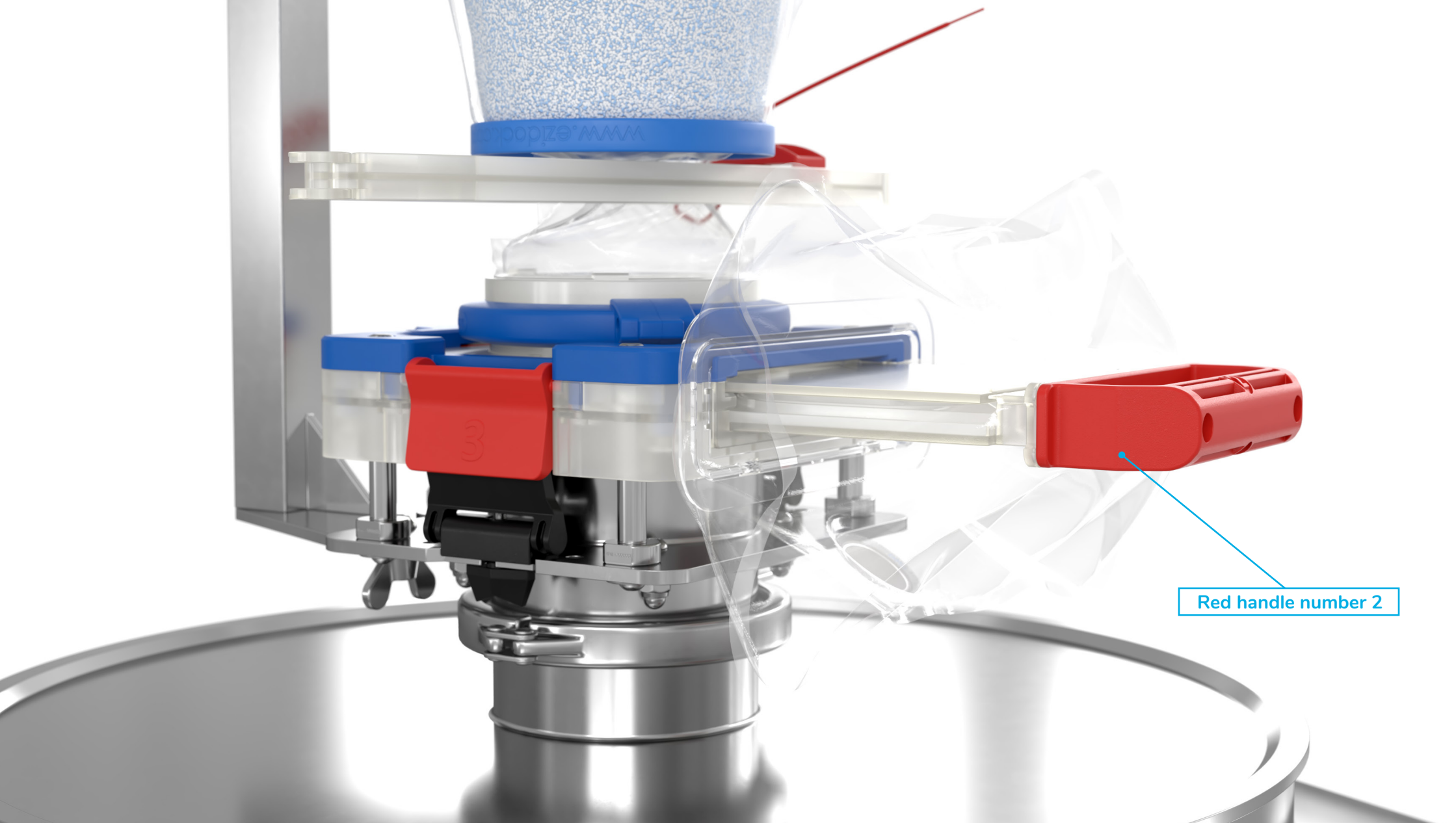
EZI-DOCK SYSTEMS LTD
Ezi-Flow CSV
Bottle Discharging



5:

Now, the rear toggle, marked number 1 on the CSV Active, can be fully turned to release the interlocks.

EZI-DOCK SYSTEMS LTD
Ezi-Flow CSV
Bottle Discharging

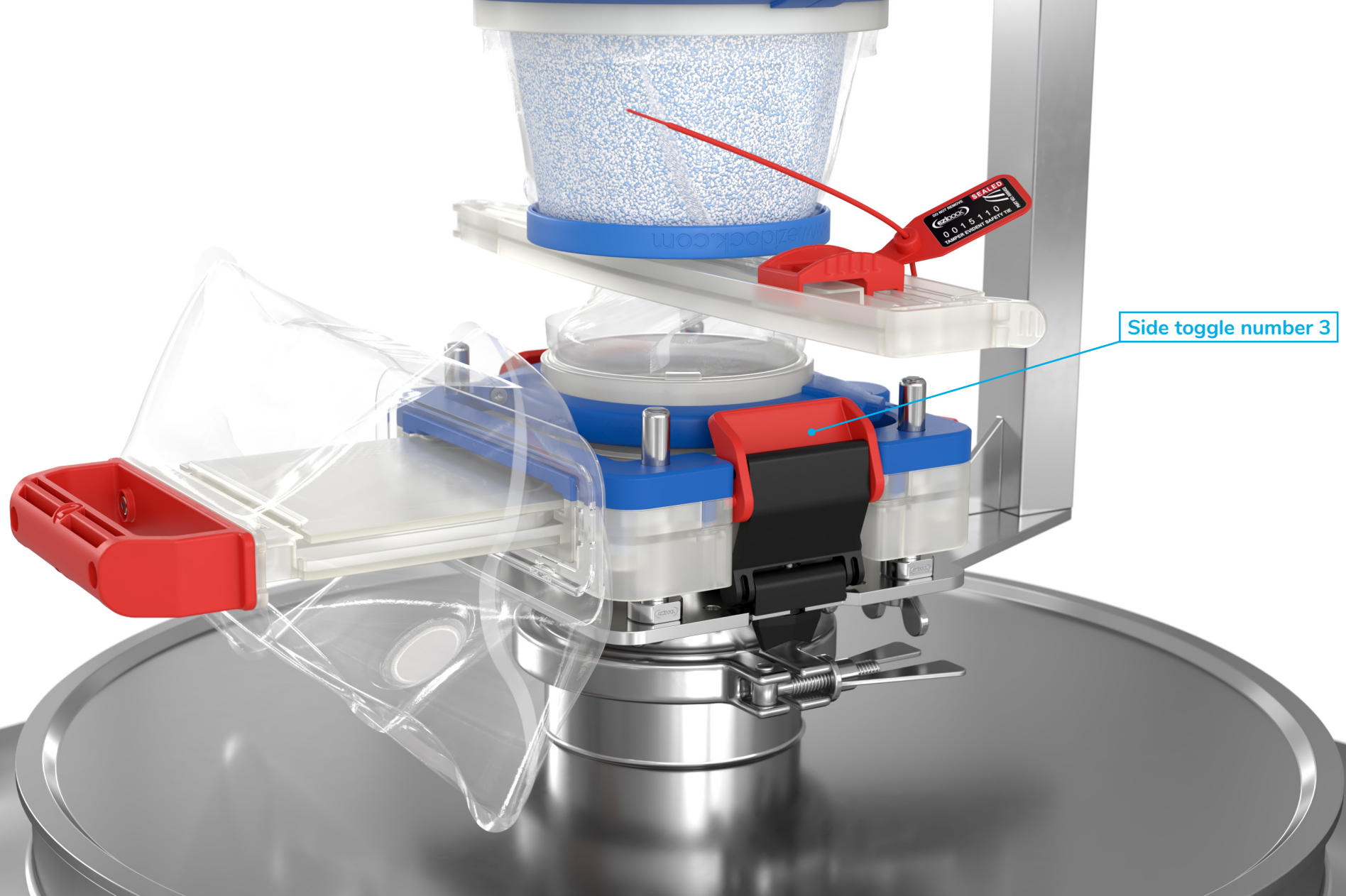


Red handle number 2

6:

The next operation is to pull out the red handle marked number 2. This removes the active and passive sliders.

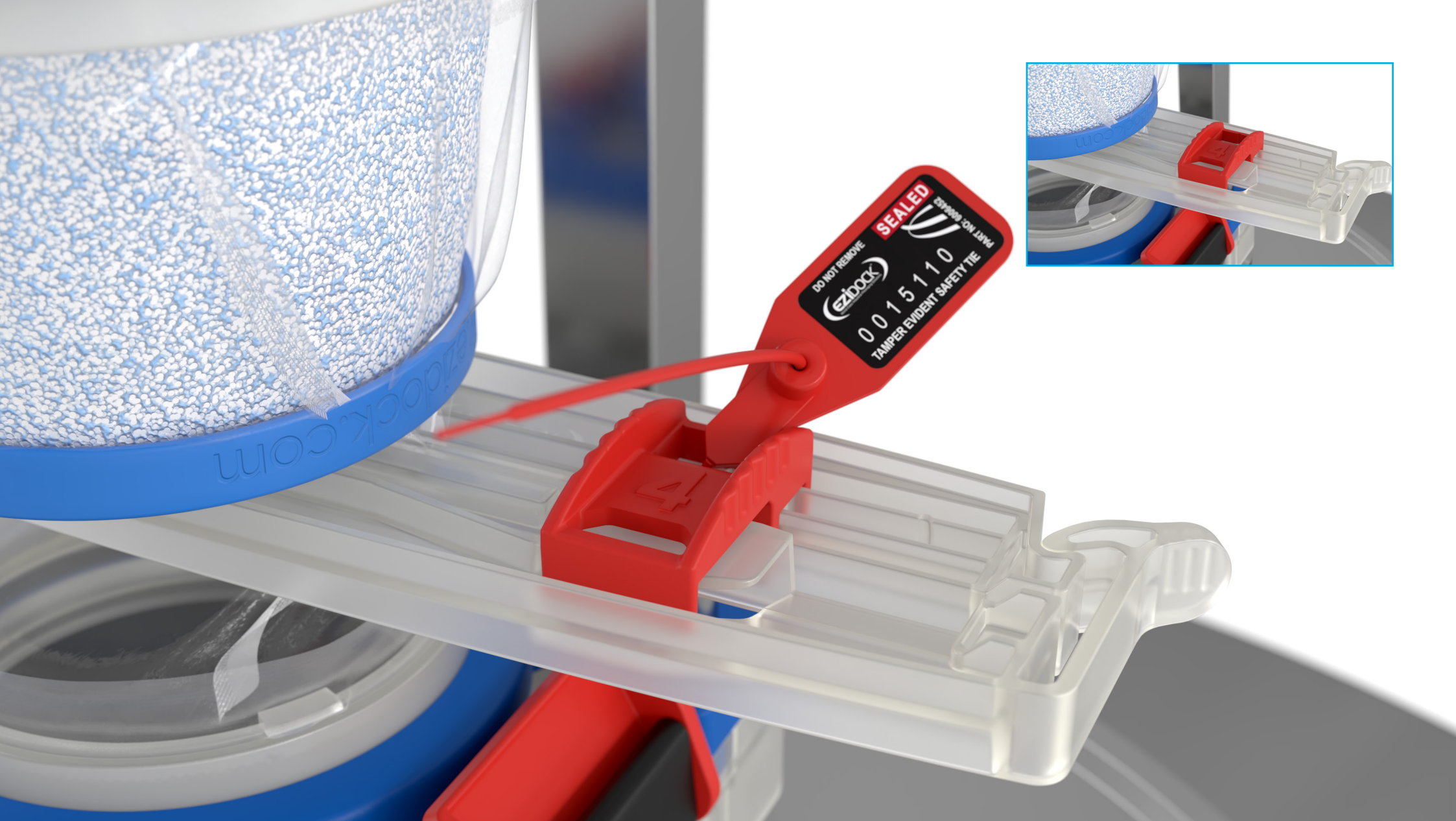
EZI-DOCK SYSTEMS LTD
Ezi-Flow CSV
Bottle Discharging



7:

The removal of the sliders has left a void in the system, which the next operation deals with. Fully raising the two red side toggles, marked number 3, removes this void, by lowering the active cassette onto the active spigot and creating a contained seal.

EZI-DOCK SYSTEMS LTD
Ezi-Flow CSV
Bottle Discharging



8:

The Red Tamper Evident Security tag must then be removed.

⚠ The bag clamp must not be removed until the first 3 operations have been correctly completed. Doing so could flood the system and cause a failure in the containment performance.

EZI-DOCK SYSTEMS LTD

Ezi-Flow CSV
Bottle Discharging



9:

The gripper on the flexible connector chute, marked as Number 4, can now be removed and product can now flow freely through the full-bore aperture.

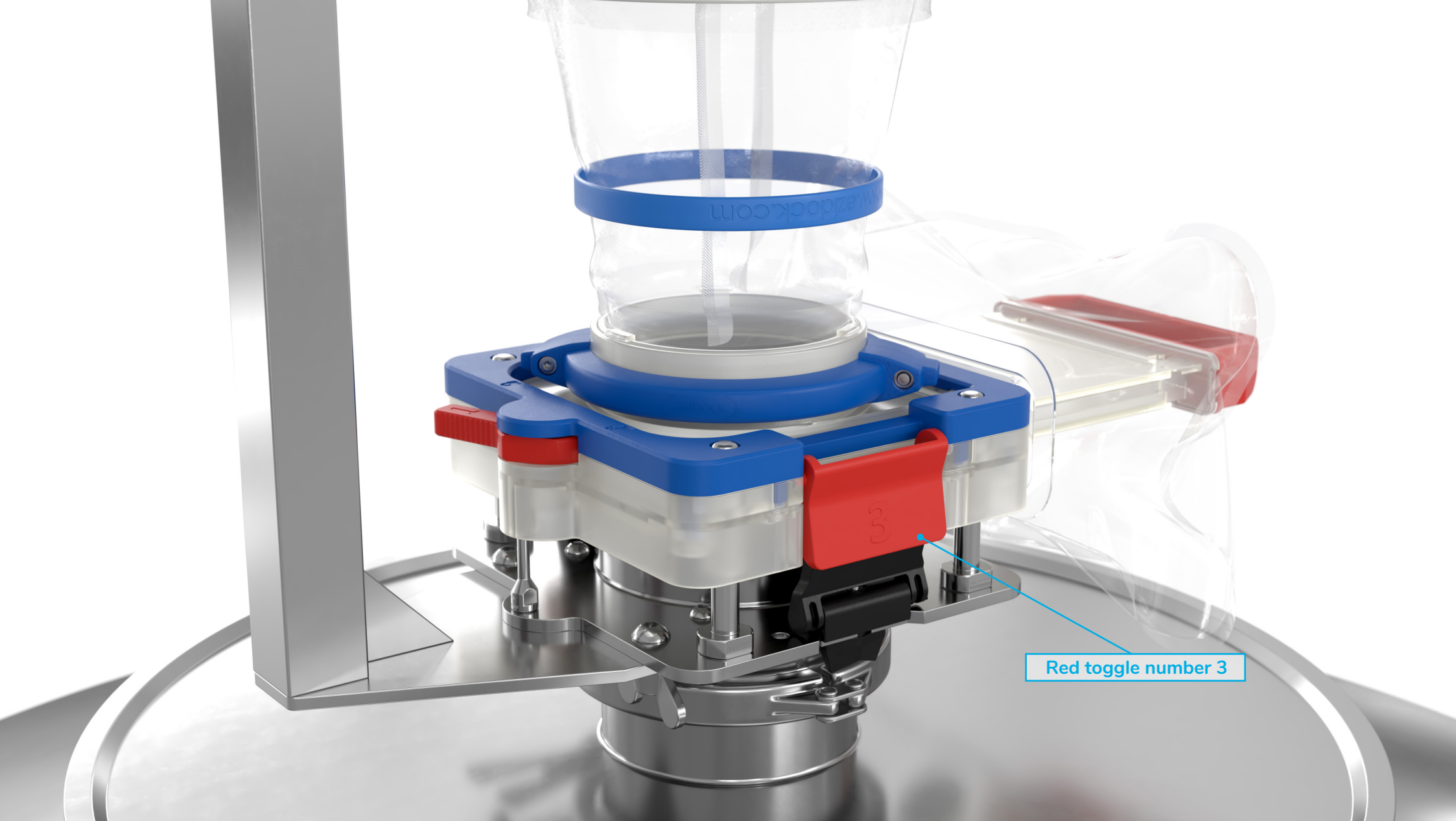
EZI-DOCK SYSTEMS LTD
Ezi-Flow CSV
Bottle Discharging



10:

Before removing the Bottle, first pat and gently shake it to ensure any residual materials are fully discharged. You then simply reverse the docking process.

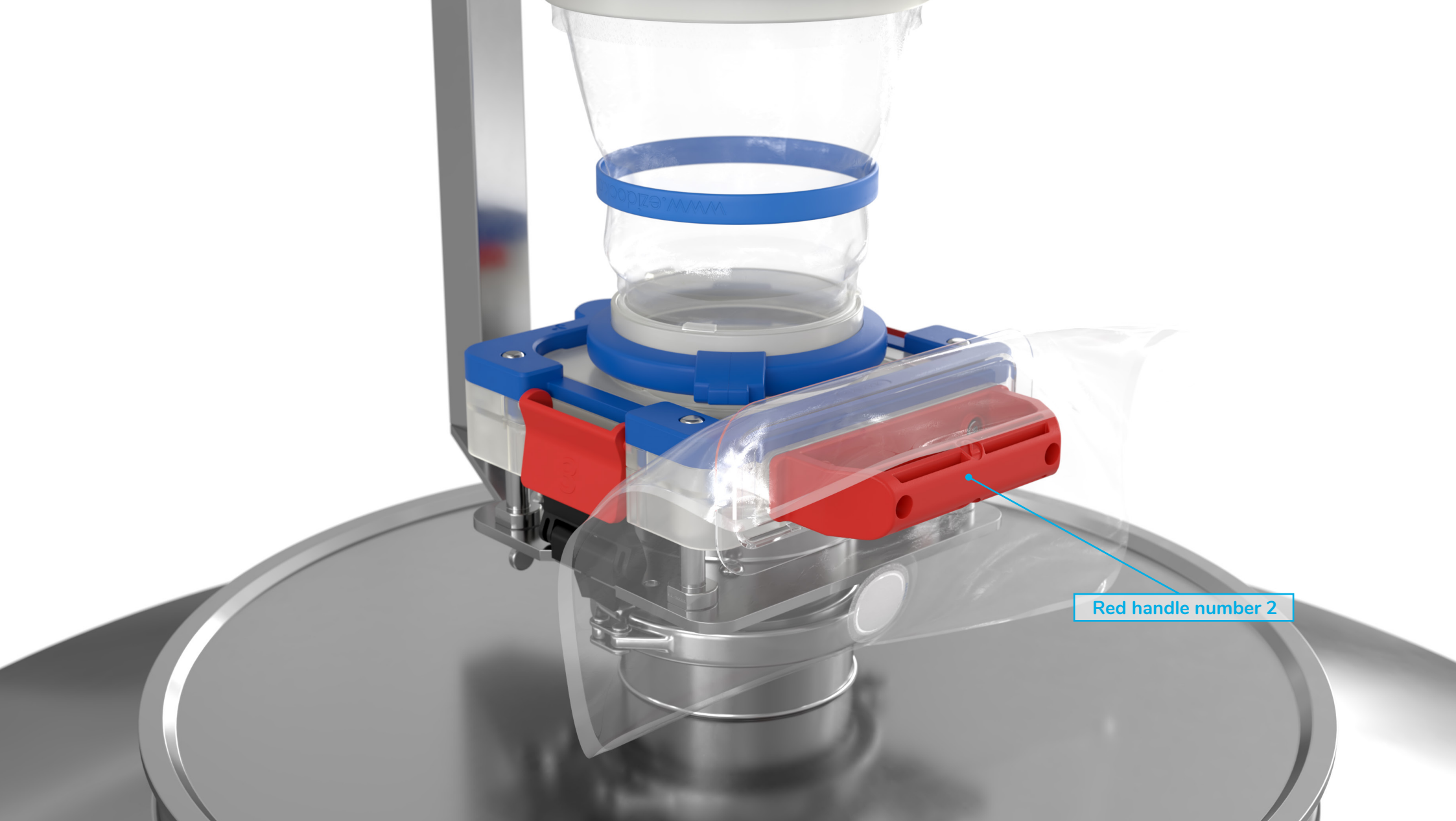
EZI-DOCK SYSTEMS LTD
Ezi-Flow CSV
Bottle Discharging



11:

Lower the red side toggles, marked number 3.

EZI-DOCK SYSTEMS LTD
Ezi-Flow CSV
Bottle Discharging

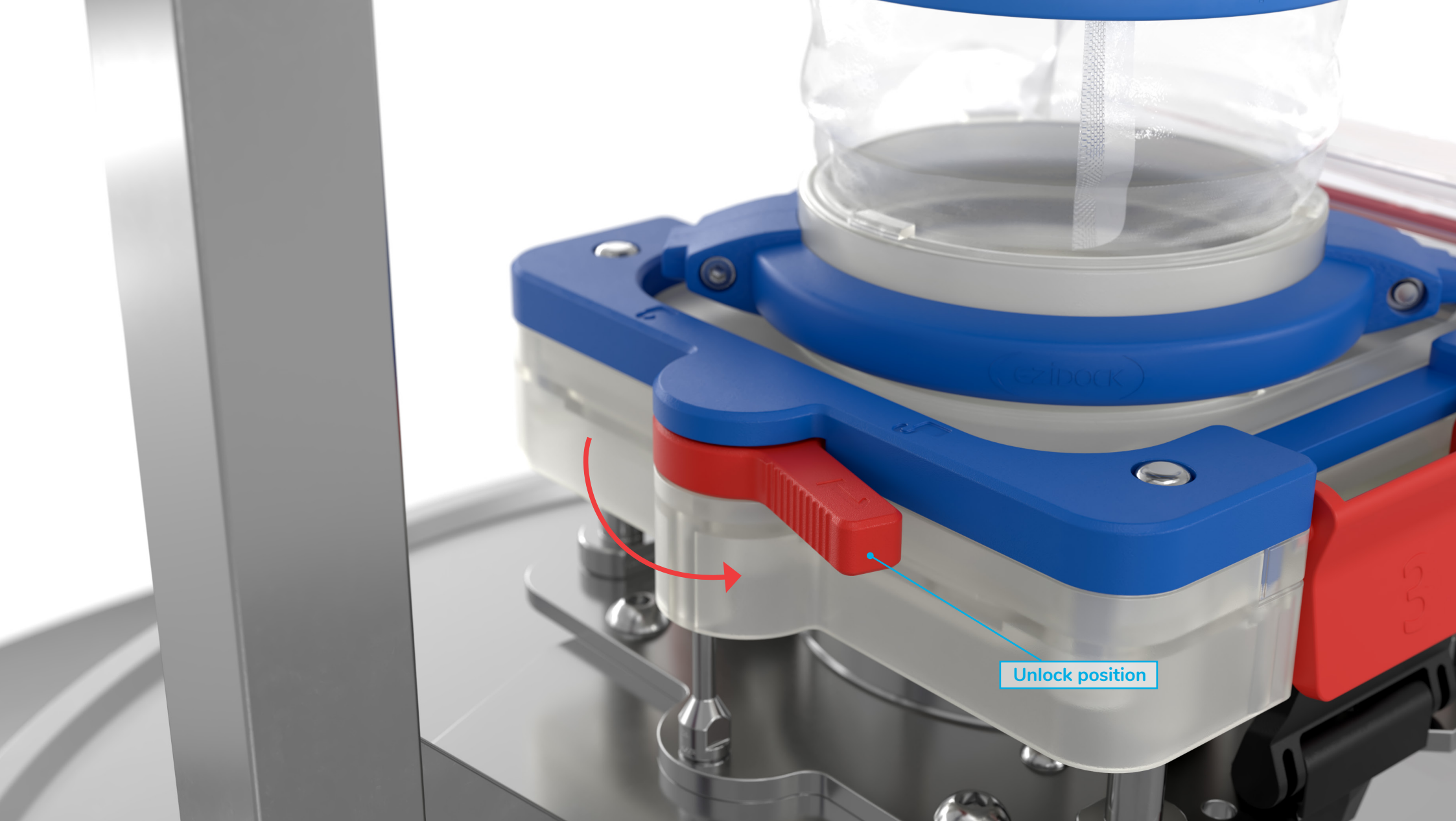


Red handle number 2

12:

Push back the front red handle, marked number 2.

EZI-DOCK SYSTEMS LTD
Ezi-Flow CSV
Bottle Discharging



13:

Fully turn the rear red toggle, marked number 1, to its unlock position.

EZI-DOCK SYSTEMS LTD
Ezi-Flow CSV
Bottle Discharging



14:

Now the bottle/ flexible connector chute can be lifted clear of the active.

EZI-DOCK SYSTEMS LTD

Ezi-Flow CSV
Bottle Discharging



Ezi-Dock Systems Limited

Park Court, Park Lane Business Park, Kirkby in Ashfield,
Notts NG17 9GU United Kingdom

Tel: + 44 (0) 1623 888 000

Email: sales@ezidock.com

Web: www.ezidock.com