



Ezi-Flow CSV Double-Headed Chargebag Filling

Operating Instructions

Follow these instructions when using an Ezi-Flow CSV double-headed chargebag to fill from a contained filter-dryer, spray-dryer, mixer, roller-compactor - or any piece of processing equipment where the use of a filling funnel is not possible.



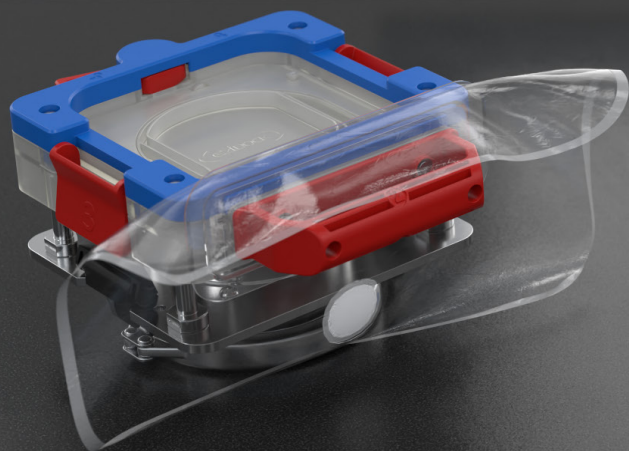
VERSION 1.0
DATE PRODUCED 03/03/22

1

- During this procedure you will need:

- 1 A Double-headed Ezi-Flow Chargebag with two pre-fitted passive connections and a pre-fitted Ezi-Grip Shut-Off Clamp.
- 2 An Ezi-Flow CSV Active (already in place).

NB - An isolation valve above the CSV Active is also required.



2



1



Unfolded Chargebag



2:

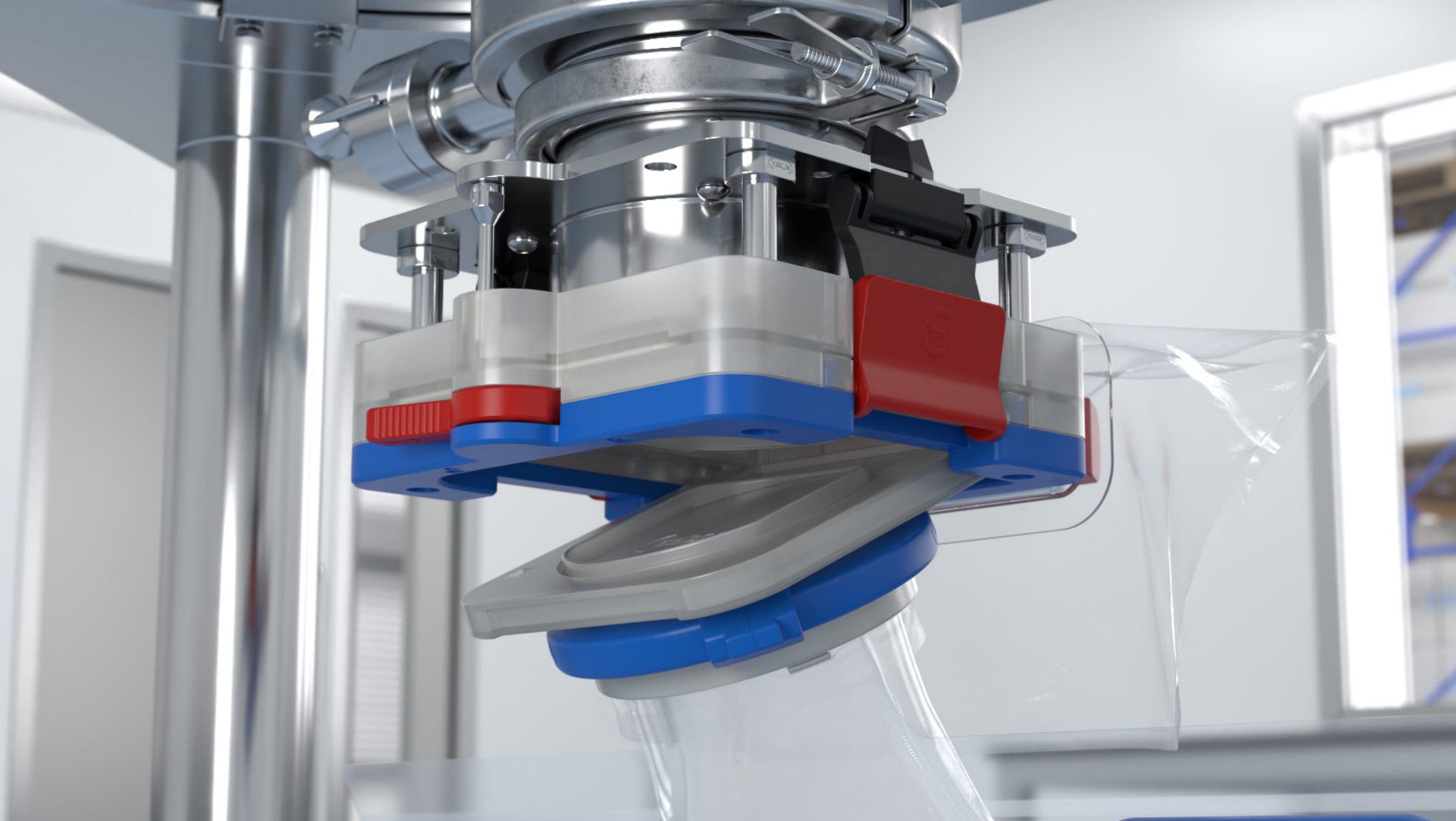
First, remove the Chargebag from its hygienic pouch by tearing the Perforated Seal.

Then discard the blue protective transit sleeve and carefully unfold the chargebag.

The filling end is the one that does not have the pre-fitted Ezi-Grip Clamp – be careful to not connect the Chargebag the wrong way round.

EZI-DOCK SYSTEMS LTD

Ezi-Flow CSV Double-Headed
Chargebag Filling



3:

Dock the chargebag, by sliding the front of the passive under the lip of the CSV Active.

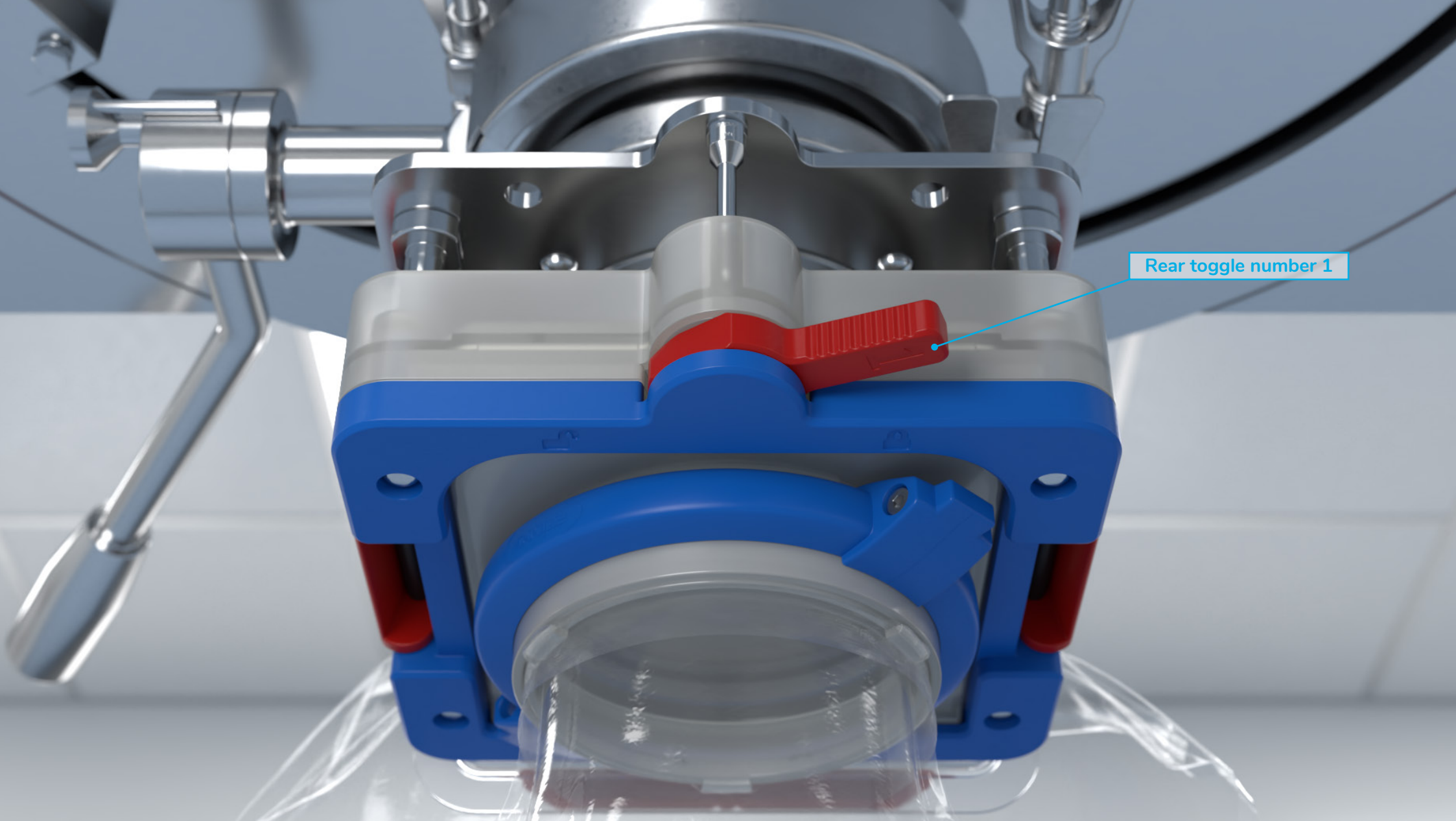
EZI-DOCK SYSTEMS LTD
Ezi-Flow CSV Double-Headed
Chargebag Filling



3A:

Firmly press the passive so it is flat & level at the rear.

EZI-DOCK SYSTEMS LTD
Ezi-Flow CSV Double-Headed
Chargebag Filling

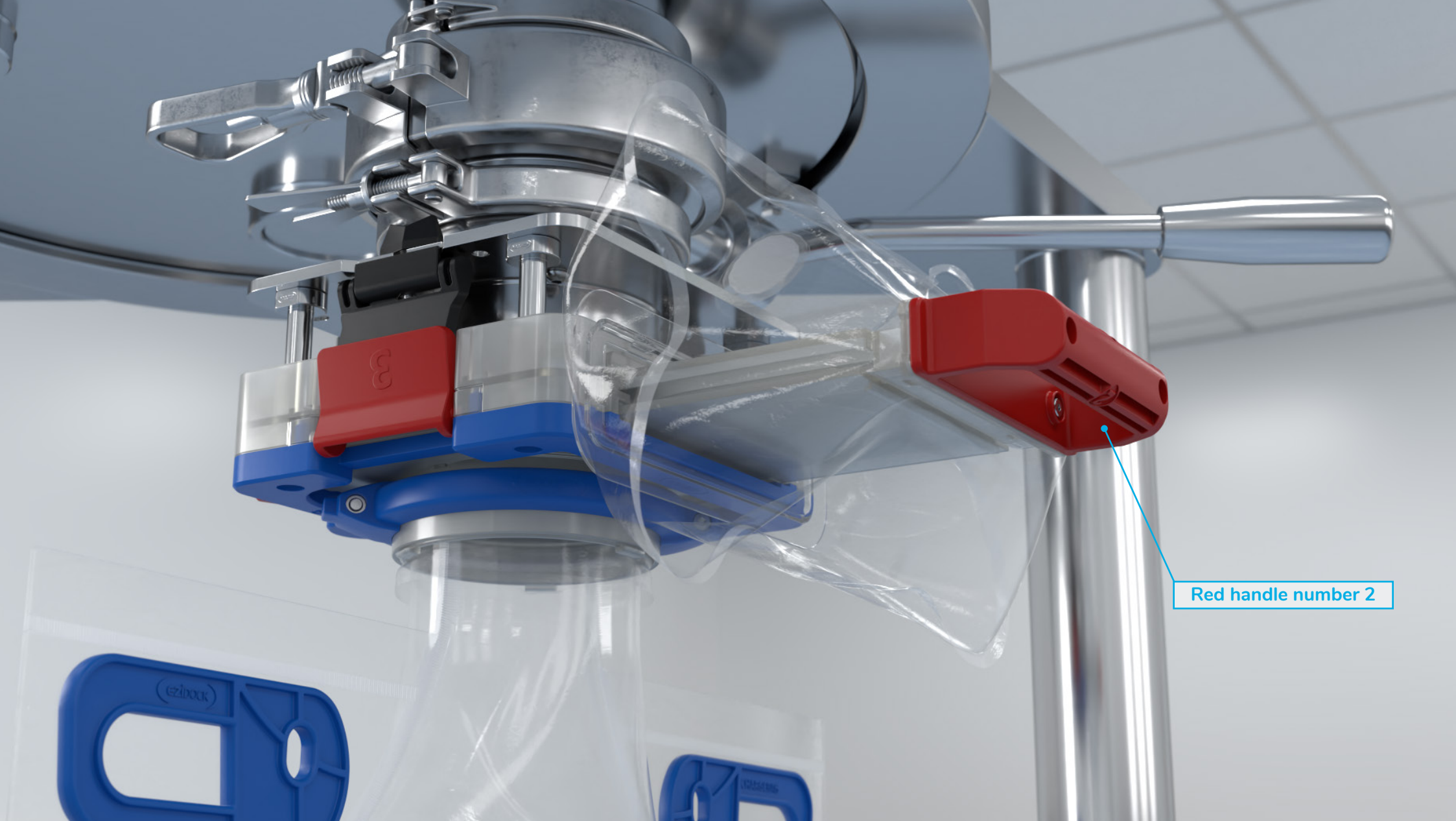


Rear toggle number 1

4:

Fully turn the rear red toggle, marked number 1, to lock the chargebag in place and release the active & passive interlocks.

EZI-DOCK SYSTEMS LTD
Ezi-Flow CSV Double-Headed
Chargebag Filling

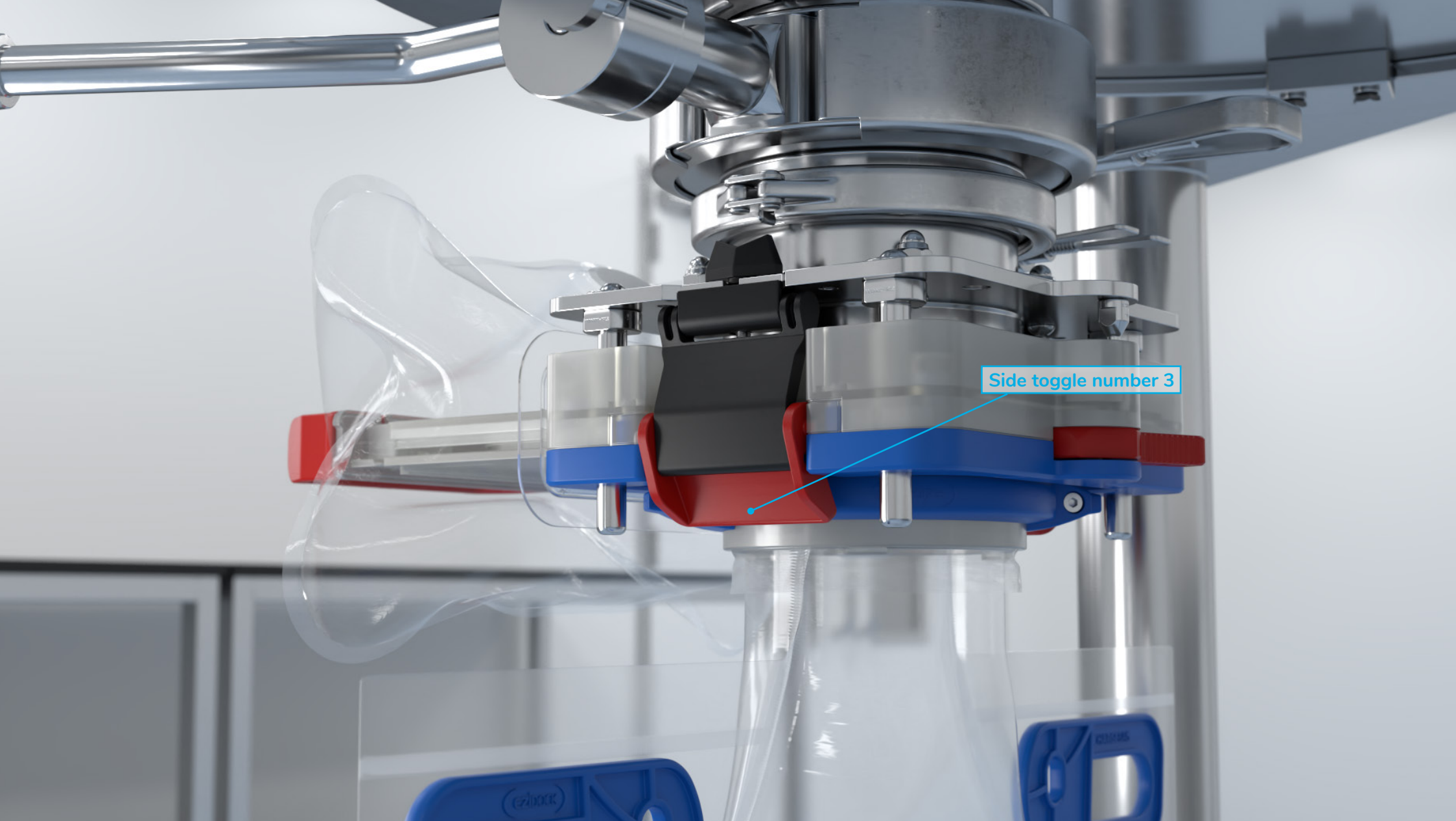


Red handle number 2

5:

The next operation is to pull out the red handle, marked number 2.
This removes both the active and passive sliders.

EZI-DOCK SYSTEMS LTD
Ezi-Flow CSV Double-Headed
Chargebag Filling



6:

At this point there is a void in the system, and so the two red side toggles, marked number 3, need to be fully lowered. This raises the active cassette onto the active spigot and creates a contained seal.

EZI-DOCK SYSTEMS LTD
Ezi-Flow CSV Double-Headed
Chargebag Filling



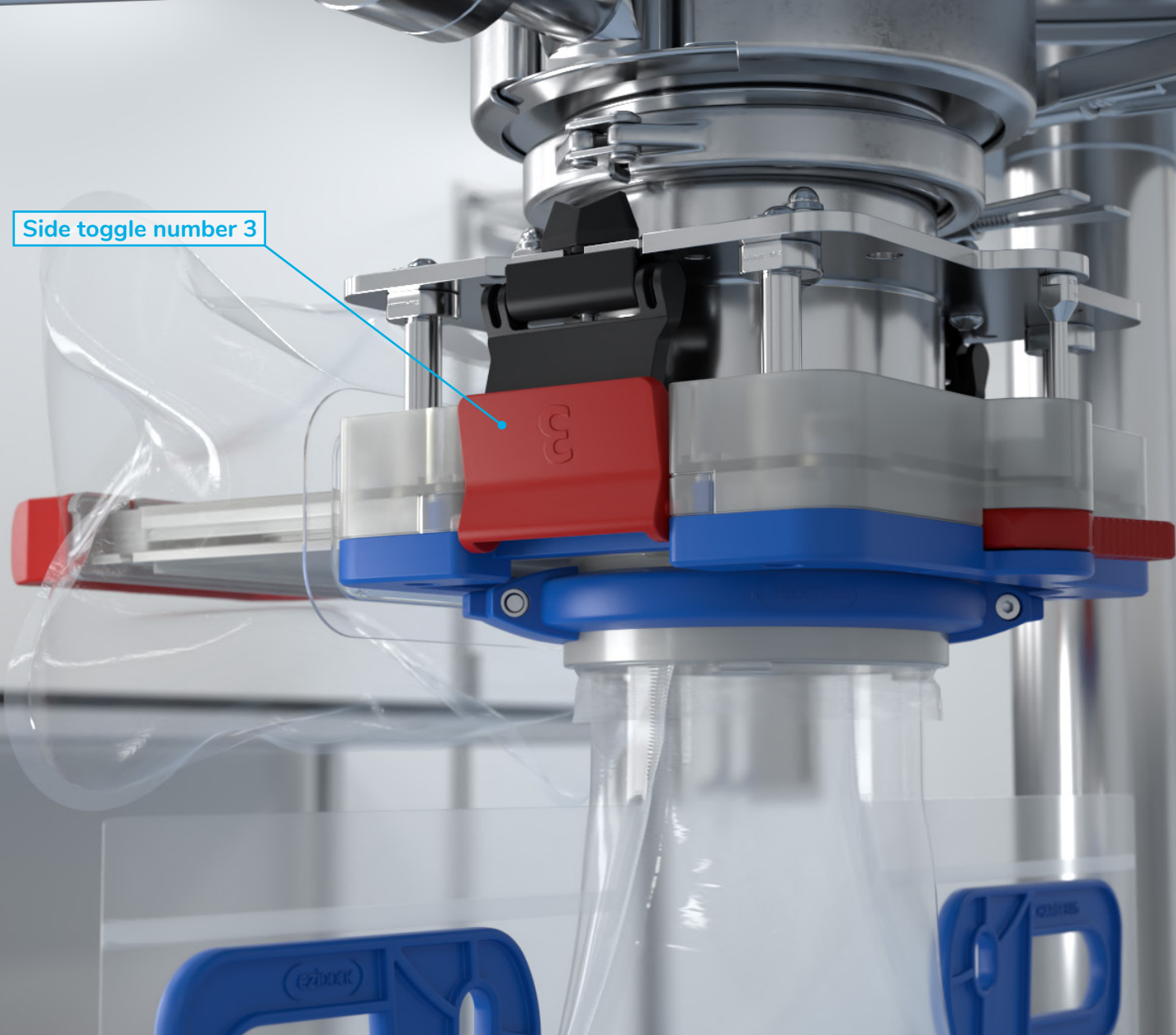
7:

To fill the chargebag, open the isolation valve above the CSV Active and dose as required.

When filling is complete close the isolation valve, allowing any excess materials to fall through into the bag.

EZI-DOCK SYSTEMS LTD

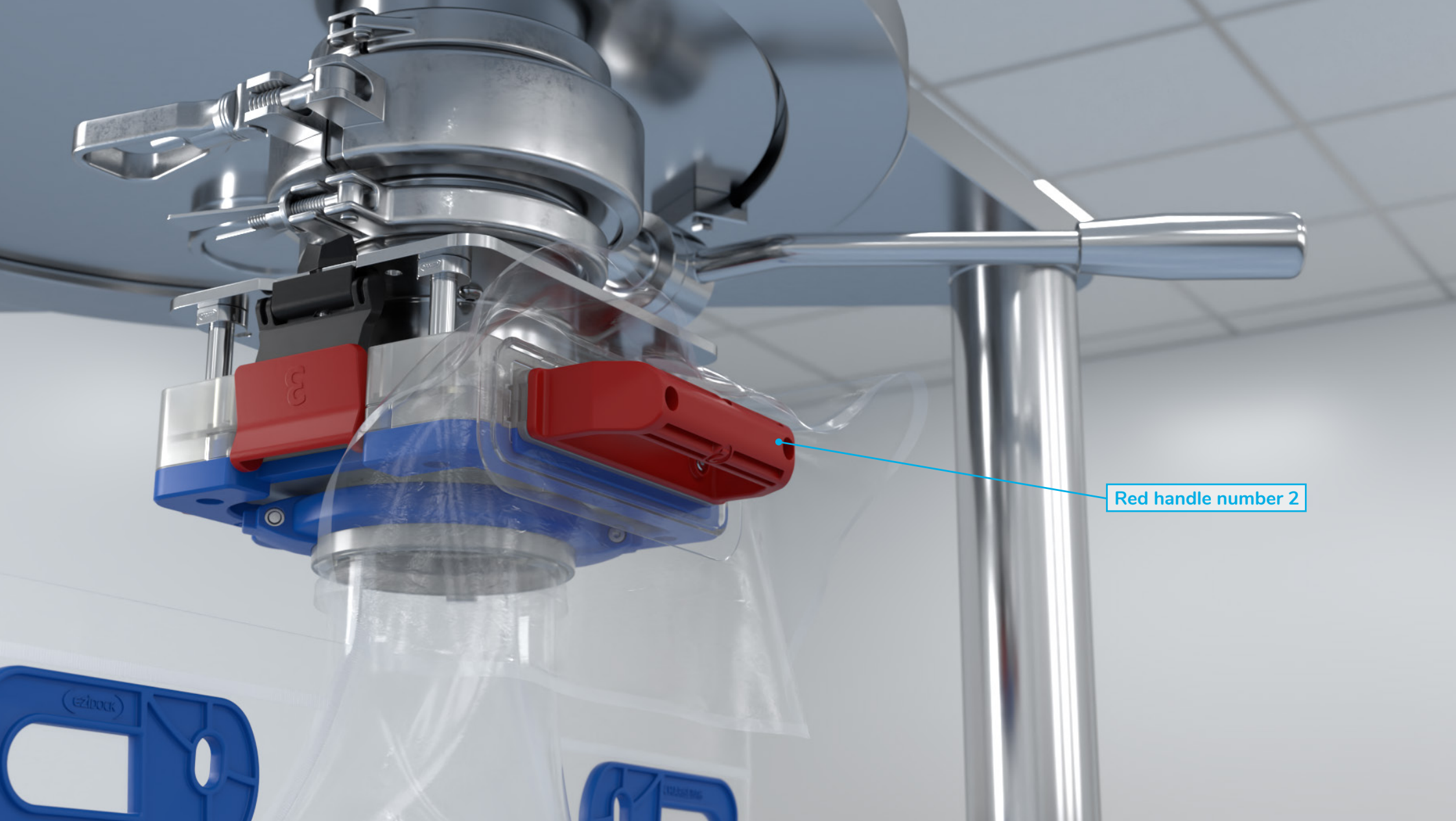
Ezi-Flow CSV Double-Headed
Chargebag Filling



8:

Having closed the isolation valve, the chargebag can be removed by reversing the docking procedure:
Raise the two red side toggles marked 3,

EZI-DOCK SYSTEMS LTD
Ezi-Flow CSV Double-Headed
Chargebag Filling

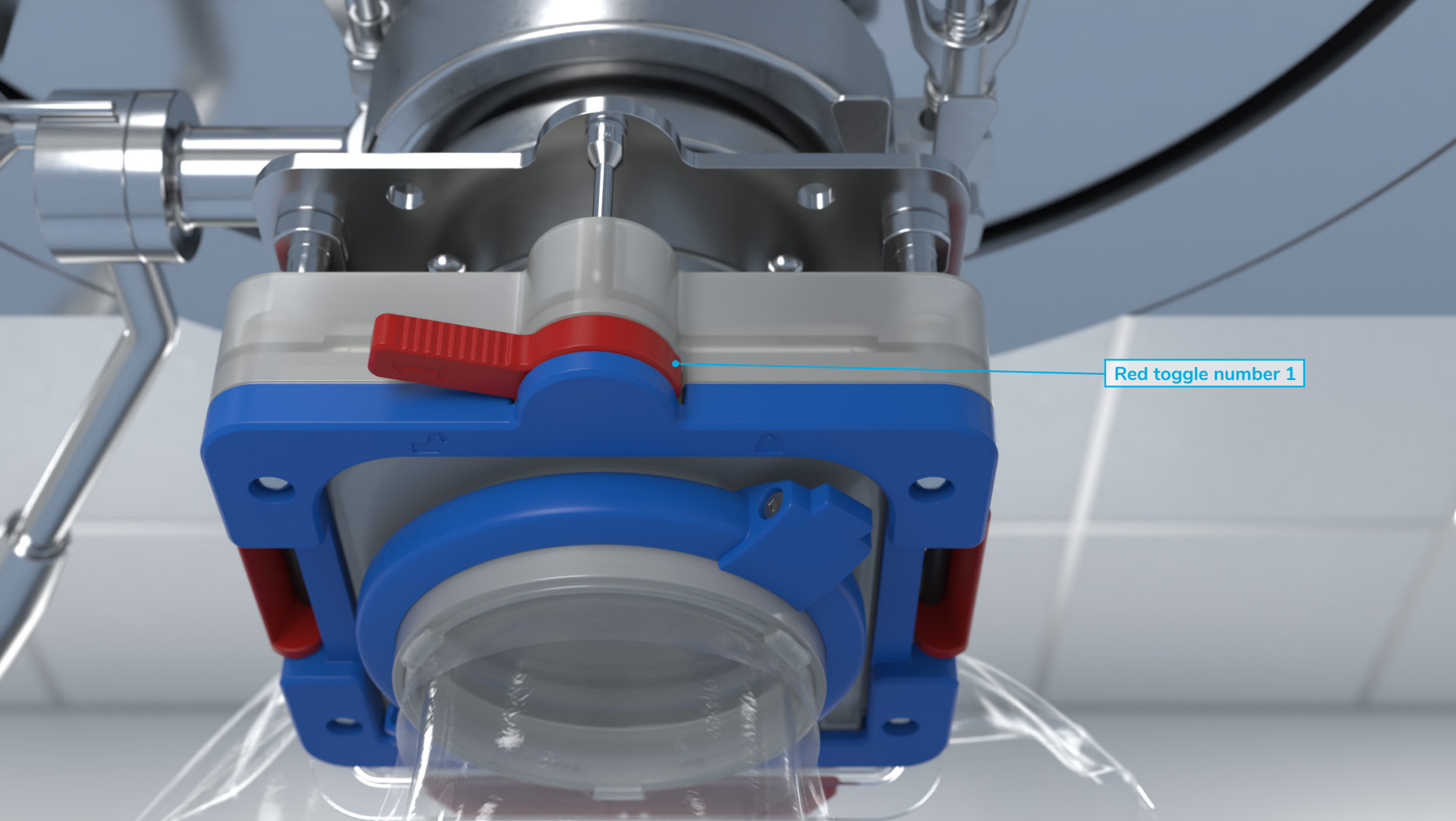


Red handle number 2

9:

Push in the red handle marked 2,


EZI-DOCK SYSTEMS LTD
Ezi-Flow CSV Double-Headed
Chargebag Filling



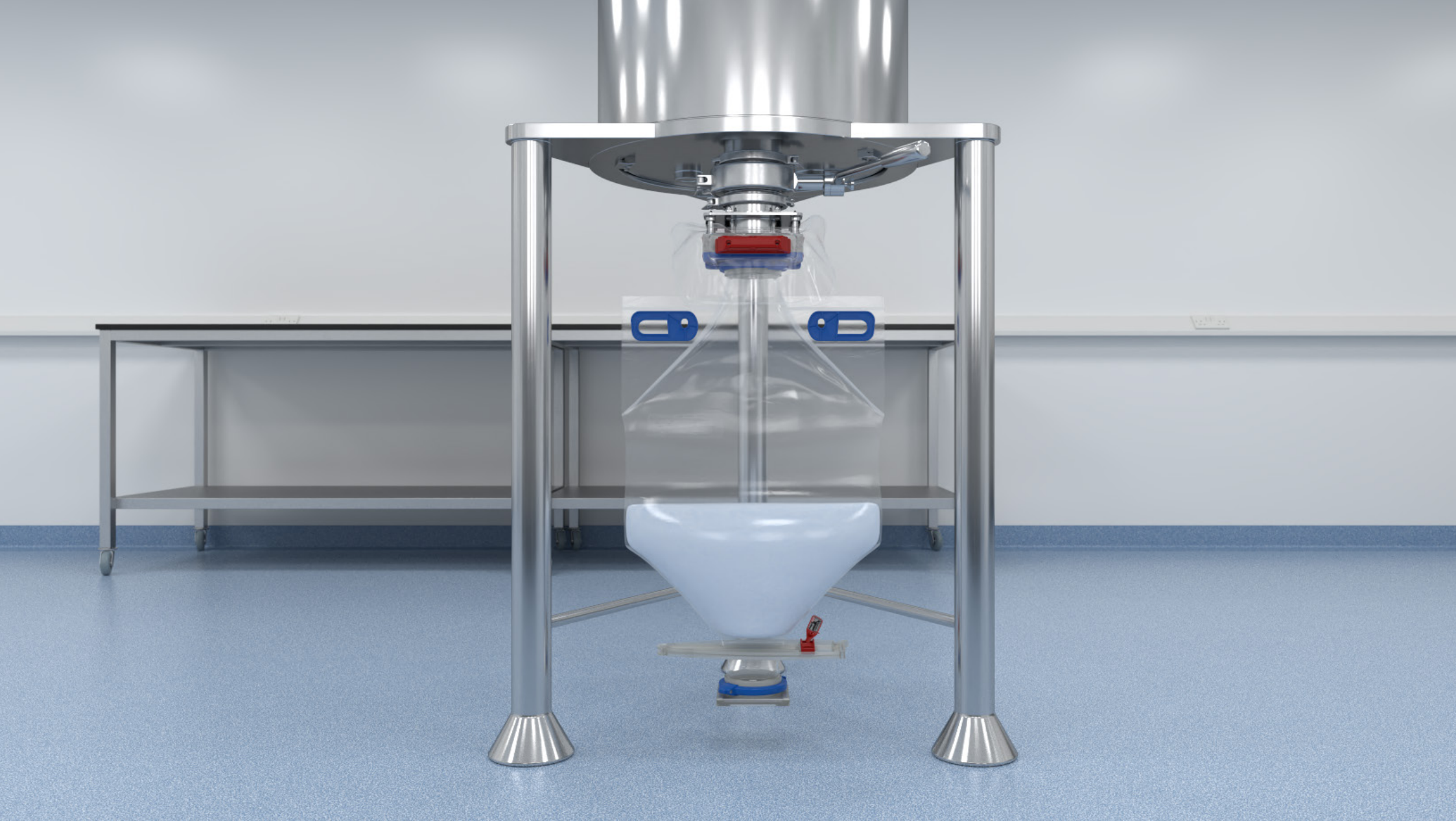
Red toggle number 1

10:

Finally fully turn the rear red toggle marked 1.

 Be careful not to let the Chargebag drop

EZI-DOCK SYSTEMS LTD
Ezi-Flow CSV Double-Headed
Chargebag Filling



11:

The chargebag can now be safely transferred to the next process.

EZI-DOCK SYSTEMS LTD
Ezi-Flow CSV Double-Headed
Chargebag Filling



Ezi-Dock Systems Limited

Park Court, Park Lane Business Park, Kirkby in Ashfield,
Notts NG17 9GU United Kingdom



Tel: **+ 44 (0) 1623 888 000**



Email: **sales@ezidock.com**



Web: **www.ezidock.com**

EZI-DOCK SYSTEMS LTD

Ezi-Flow CSV Double-Headed
Chargebag Filling