

HOSE-TAIL FITTINGS - IMPERIAL

Hose-barbs - Tri-Clamp

Hose barbs on fittings and couplings come in many shapes and sizes. Slope and depth of the barb, sharpness of the gripping edge, number of barbs, and spacing of barbs are all factors that contribute to the gripping and sealing ability of hose barbs. The internal diameter of the tube, flexibility of the tube material, and the intended application all factor into the decision on which fitting or coupling to choose for the job. It's always a good idea to test a hose barb fitting or coupling with your exact tubing and application parameters.



There are Multi-rib versions for reinforced hoses and Single rib versions to use with a hose clamp. **More options possible.**

Technical information

Sizes	see table
Connections	Tri-clamp
Material	1.4404 (316L)
Finishes	Interior surfaces SF1
Certificates (st.)	3.1 material
Certificates (opt.)	2.2 surface finish

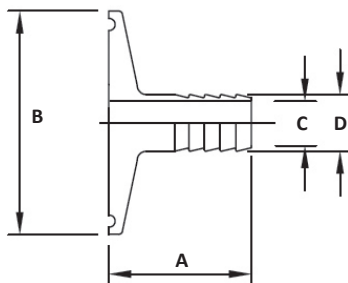
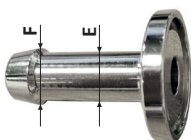
For braided hoses we recommend to choose a multi-rib with size D to be the ID of the hose.

For not-reinforced tubings you could use both, the multi-rib barb size D should always be slightly larger (5-10%) than ID of the tubing. When a single-rib is used, size E should be the ID of the tubing, and size F 10-15% larger than ID of the tubing.

Multi-rib:



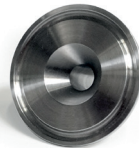
Single-rib:



A	28 - 90, depending on C and D
B	25, 34, 50.5, 64, 77.5, 91, 119
C / D	most standard sizes, both metric as imperial from 3 to 76,2 mm

Standard we deliver flat faced Tri-Clamp sides, on request we deliver the Tri-Clamp flange with gradient from the Pipe standard.

Flat Faced Side: Pipe standard Side:



ROMYNOX

RX: F-S

These are standard items. We also deliver other sizes, according to ISO, DIN and SMS. For more and the latest information use the QR-code to go to the website.