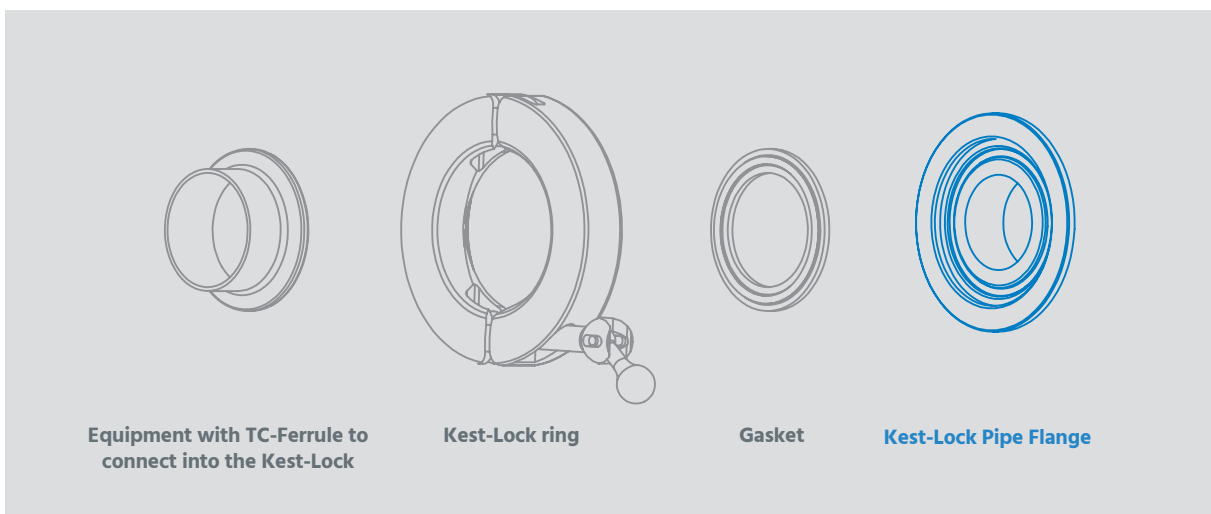
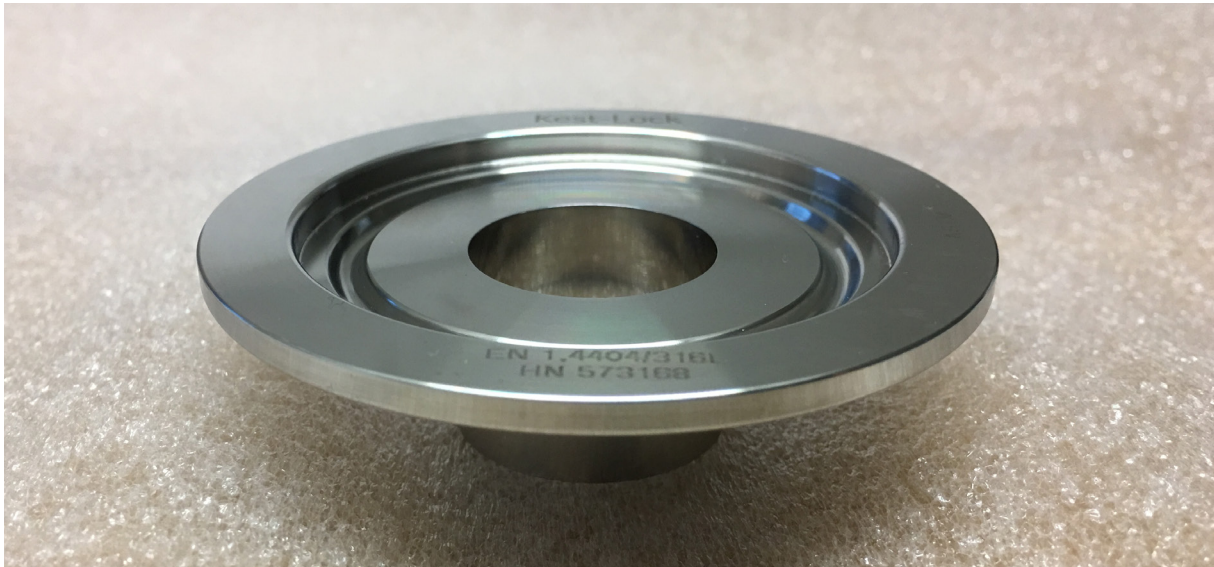


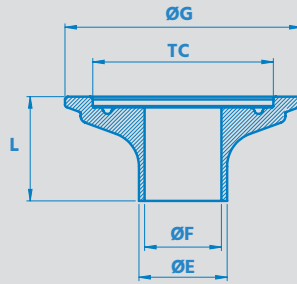
Kest-Lock Pipe Flange

SPECIFICATIONS

Material grade	EN 1.4404	ASTM 316L or ASME 316L
Material requirement	EN 10 272/10028-7	A479/A240 or SA479/SA240
Documentation	Heat Certificate 3.1 acc. to EN 10 204	
Surface finish	Ra≤[0.5 μm] [20 μin] internal (polished)	Ra≤[1.6 μm] [63 μin] outer
Design temperature	[-80°C to 200°C] [112°F to 392°F]	
Design pressure	[-1 bar(g) to + 10 bar(g)] [-14.5 psi to 145 psi]	
Marking	Marked with material grade and heat number	
Packing	Sealed in vacuum plastic bag, labelled with art. number and packed in a box	
Gaskets	The Kest-Lock is designed for use of standard gaskets acc. to ISO 2852 type B	
Standard	The Kest-Lock is designed for clamp couplings acc ISO 2852, ASME BPE, DIN 32 676	
Quality assurance	Each product is controlled and tested acc. to Kest Technology quality assurance system	

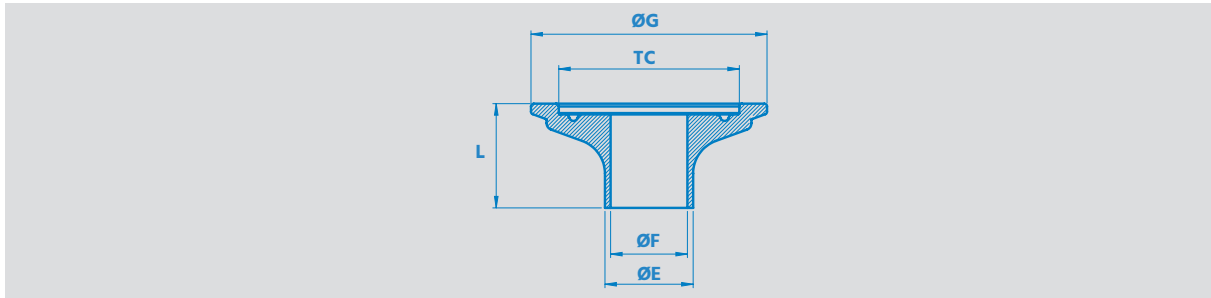


Kest-Lock Pipe Flange



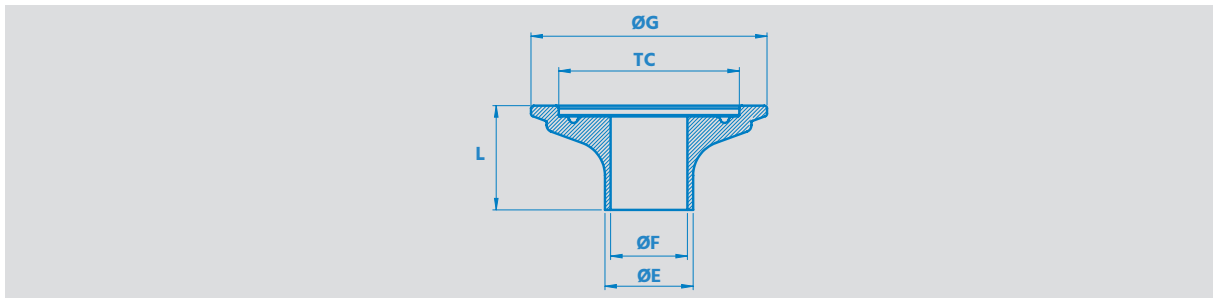
REF. NO	PRODUCT CODE	TC mm [in]	ØE mm [in]	ØF mm [in]	ØG mm [in]	L mm [in]
For pipe ASTM 269/270						
102293	KLPF-TC25-ASTM0.5-30	25 [0.984]	12.7 [0.500]	9.4 [0.370]	42.5 [1.673]	30 [1.181]
102294	KLPF-TC25-ASTM0.75-30	25 [0.984]	19.1 [0.750]	15.8 [0.622]	42.5 [1.673]	30 [1.181]
102295	KLPF-TC50-ASTM1.0-30	50.5 [1.988]	25.4 [1.000]	22.1 [0.870]	68 [2.677]	30 [1.181]
102296	KLPF-TC50-ASTM1.5-30	50.5 [1.988]	38.1 [1.500]	34.8 [1.370]	68 [2.677]	30 [1.181]
102297	KLPF-TC64-ASTM2.0-30	64 [2.520]	50.8 [2.000]	47.5 [1.870]	81.5 [3.209]	30 [1.181]
102298	KLPF-TC77-ASTM2.5-30	77.5 [3.051]	63.5 [2.500]	60.2 [2.370]	95 [3.740]	30 [1.181]
102299	KLPF-TC91-ASTM3.0-30	91 [3.583]	76.2 [3.000]	72.9 [2.870]	108.5 [4.272]	30 [1.181]
102300	KLPF-TC119-ASTM4.0-30	119 [4.685]	101.6 [4.000]	97.4 [3.835]	136.5 [5.374]	30 [1.181]
For pipe ISO 1127						
102301	KLPF-TC25-ISO8-30	25 [0.984]	13.5 [0.532]	10.3 [0.406]	42.5 [1.673]	30 [1.181]
102302	KLPF-TC34-ISO10-30	34 [1.339]	17.2 [0.677]	14 [0.551]	51.5 [2.028]	30 [1.181]
102303	KLPF-TC34-ISO15-30	34 [1.339]	21.3 [0.839]	18.1 [0.713]	51.5 [2.028]	30 [1.181]
102304	KLPF-TC50-ISO20-30	50.5 [1.988]	26.9 [1.059]	23.7 [0.933]	68 [2.677]	30 [1.181]
102305	KLPF-TC50-ISO25-30	50.5 [1.988]	33.7 [1.327]	29.7 [1.169]	68 [2.677]	30 [1.181]
102306	KLPF-TC64-ISO32-30	64 [2.520]	42.3 [1.665]	38.3 [1.508]	81.5 [3.209]	30 [1.181]
102307	KLPF-TC64-ISO40-30	64 [2.520]	48.3 [1.902]	44.3 [1.744]	81.5 [3.209]	30 [1.181]
102308	KLPF-TC77-ISO50-30	77.5 [3.051]	60.3 [2.374]	56.3 [2.217]	95 [3.740]	30 [1.181]
102309	KLPF-TC91-ISO65-30	91 [3.583]	76.3 [3.004]	71.5 [2.815]	108.5 [4.272]	30 [1.181]

Kest-Lock Pipe Flange



REF. NO	PRODUCT CODE	TC mm [in]	ØE mm [in]	ØF mm [in]	ØG mm [in]	L mm [in]
For pipe EN 10357-A (DIN 11850-R2)						
102310	KLPF-TC34-EN10-2-30	34 [1.339]	13 [0.512]	10 [0.394]	51.5 [2.028]	30 [1.181]
102311	KLPF-TC34-EN15-2-30	34 [1.339]	19 [0.748]	16 [0.630]	51.5 [2.028]	30 [1.181]
102312	KLPF-TC34-EN20-2-30	34 [1.339]	23 [0.906]	20 [0.787]	51.5 [2.028]	30 [1.181]
102313	KLPF-TC50-EN25-2-30	50.5 [1.988]	29 [1.142]	26 [1.024]	68 [2.677]	30 [1.181]
102314	KLPF-TC50-EN32-2-30	50.5 [1.988]	35 [1.378]	32 [1.260]	68 [2.677]	30 [1.181]
102315	KLPF-TC50-EN40-2-30	50.5 [1.988]	41 [1.614]	38 [1.496]	68 [2.677]	30 [1.181]
102316	KLPF-TC64-EN50-2-30	64 [2.520]	53 [2.087]	50 [1.969]	81.5 [3.209]	30 [1.181]
102317	KLPF-TC91-EN65-1-30	91 [3.583]	70 [2.756]	66 [2.598]	108.5 [4.272]	30 [1.181]
102318	KLPF-TC119-EN100-1-30	119 [4.685]	104 [4.094]	100 [3.937]	136.5 [5.374]	30 [1.181]
For pipe SMS 3008						
102319	KLPF-TC25-SMS12-30	25 [0.984]	12.0 [0.472]	10 [0.394]	42.5 [1.673]	30 [1.181]
102320	KLPF-TC25-SMS18-30	25 [0.984]	18.0 [0.709]	15.0 [0.591]	42.5 [1.673]	30 [1.181]
102321	KLPF-TC50-SMS25-30	50.5 [1.988]	25.0 [0.984]	22.6 [0.890]	68 [2.677]	30 [1.181]
102322	KLPF-TC50-SMS38-30	50.5 [1.988]	38 [1.496]	35.6 [1.402]	68 [2.677]	30 [1.181]
102323	KLPF-TC64-SMS51-30	64 [2.520]	51.0 [2.008]	48.6 [1.913]	81.5 [3.209]	30 [1.181]
102324	KLPF-TC77-SMS63-30	77.5 [3.051]	63.5 [2.500]	60.3 [2.374]	95 [3.740]	30 [1.181]
102325	KLPF-TC91-SMS76-30	91 [3.583]	76.1 [2.996]	72.9 [2.870]	108.5 [4.272]	30 [1.181]

Kest-Lock Pipe Flange



REF. NO	PRODUCT CODE	TC mm [in]	ØE mm [in]	ØF mm [in]	ØG mm [in]	L mm [in]
For pipe JS IDF						
102326	KLPF-TC50-JS1.0S-30	50.5 [1.988]	25.4 [1.000]	23 [0.906]	68 [2.677]	30 [1.181]
102327	KLPF-TC50-JS1.25S-30	50.5 [1.988]	31.8 [1.252]	29.4 [1.157]	68 [2.677]	30 [1.181]
102328	KLPF-TC50-JS1.5S-30	50.5 [1.988]	38.1 [1.500]	35.7 [1.406]	68 [2.677]	30 [1.181]
102329	KLPF-TC64-JS2.0S-30	64 [2.520]	50.8 [2.000]	47.8 [1.882]	81.5 [3.209]	30 [1.181]
102330	KLPF-TC77-JS2.5S-30	77.5 [3.051]	63.5 [2.500]	59.5 [2.343]	95 [3.740]	30 [1.181]
102331	KLPF-TC91-JS3.0S-30	91 [3.583]	76.3 [3.004]	72.3 [2.846]	108.5 [4.272]	30 [1.181]
102332	KLPF-TC106-JS3.5S-30	106 [4.173]	89.1 [3.508]	85.1 [3.350]	121.5 [4.783]	30 [1.181]