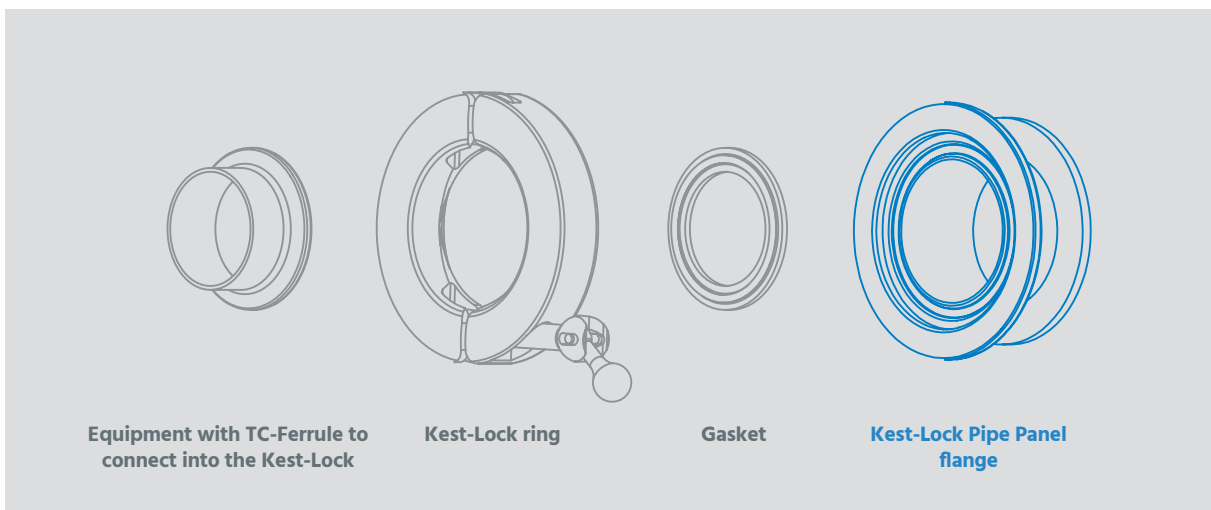


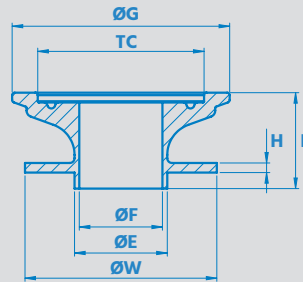
# Kest-Lock Pipe Panel Flange

## SPECIFICATIONS

Material Grade	EN 1.4404	ASTM 316L or ASME 316L
Material requirement	EN 10 272/10028-7	A479/A240 or SA479/SA240
Documentation	Heat Certificate 3.1 acc. to EN 10 204	
Surface finish	Ra≤[0.5 μm] [20 μin] internal (polished)	Ra≤[1.6 μm] [63 μin] outer
Design Temperature	[-80°C to 200°C] [112°F to 392°F]	
Design Pressure	[-1 bar(g) to + 10 bar(g)] [-14.5 psi to 145 psi]	
Marking	Marked with material grade and heat number	
Packing	Sealed in vacuum plastic bag, labelled with art. number and packed in a box	
Gaskets	The Kest-Lock is designed for use of standard gaskets acc. to ISO 2852 type B	
Standard	The Kest-Lock is designed for clamp couplings acc ISO 2852, ASME BPE, DIN 32 676	
Quality Assurance	Each product is controlled and tested acc. to Kest Technology quality assurance system	



# Kest-Lock Pipe Panel Flange



REF. NO	PRODUCT CODE	TC mm [in]	ØE mm [in]	ØF mm [in]	ØW mm [in]	H mm [in]	ØG mm [in]	L mm [in]
<b>For pipe ASTM A 269/270</b>								
102333	KLPPF-TC25-ASTM0.75-30	25 [0.984]	19.1 [0.750]	15.8 [0.622]	40 [1.575]	3 [0.118]	42.5 [1.673]	30 [1.181]
102334	KLPPF-TC50-ASTM1.0-30	50.5 [1.988]	25.4 [1.000]	22.1 [0.870]	60 [2.362]	3 [0.118]	68 [2.677]	30 [1.181]
102335	KLPPF-TC50-ASTM1.5-30	50.5 [1.988]	38.1 [1.500]	34.8 [1.370]	60 [2.362]	3 [0.118]	68 [2.677]	30 [1.181]
102336	KLPPF-TC64-ASTM2.0-30	64 [2.520]	50.8 [2.000]	47.5 [1.870]	70 [2.756]	3 [0.118]	81.5 [3.209]	30 [1.181]
<b>For pipe ISO 1127</b>								
102337	KLPPF-TC34-ISO15-30	34 [1.339]	21.3 [0.839]	18.1 [0.713]	40 [1.575]	3 [0.118]	51.5 [2.028]	30 [1.181]
102338	KLPPF-TC50-ISO25-30	50.5 [1.988]	33.7 [1.327]	29.7 [1.169]	60 [2.362]	3 [0.118]	68 [2.677]	30 [1.181]
102339	KLPPF-TC64-ISO40-30	64 [2.520]	48.3 [1.902]	44.3 [1.744]	70 [2.756]	3 [0.118]	81.5 [3.209]	30 [1.181]
<b>For pipe EN 10357-A (DIN 11850-R2)</b>								
101517	KLPPF-TC34-EN15-30	34 [1.339]	19 [0.748]	16 [0.630]	40 [1.575]	3 [0.118]	51.5 [2.028]	30 [1.181]
101498	KLPPF-TC34-EN20-30	34 [1.339]	23 [0.906]	20 [0.787]	40 [1.575]	3 [0.118]	51.5 [2.028]	30 [1.181]
101499	KLPPF-TC50-EN25-30	50.5 [1.988]	29 [1.142]	26 [1.024]	60 [2.362]	3 [0.118]	68 [2.677]	30 [1.181]