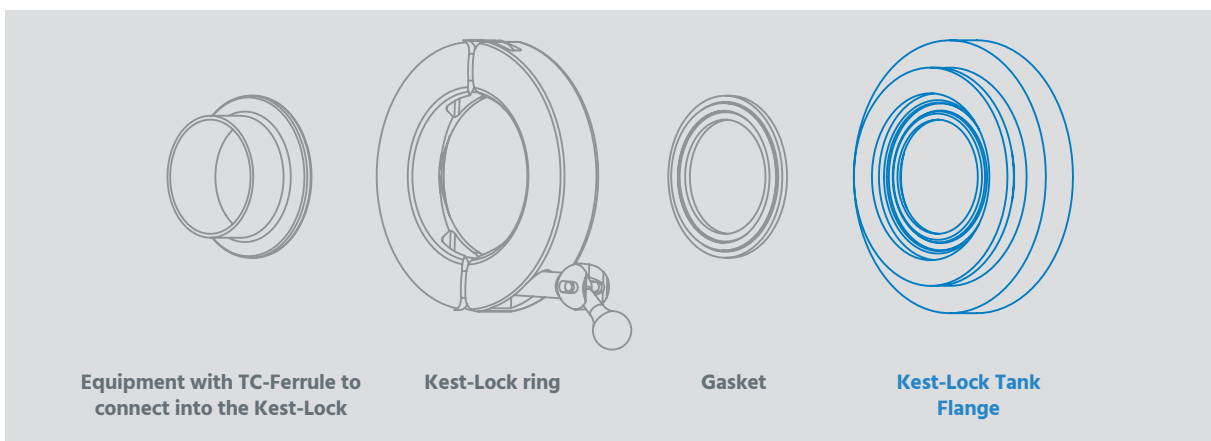
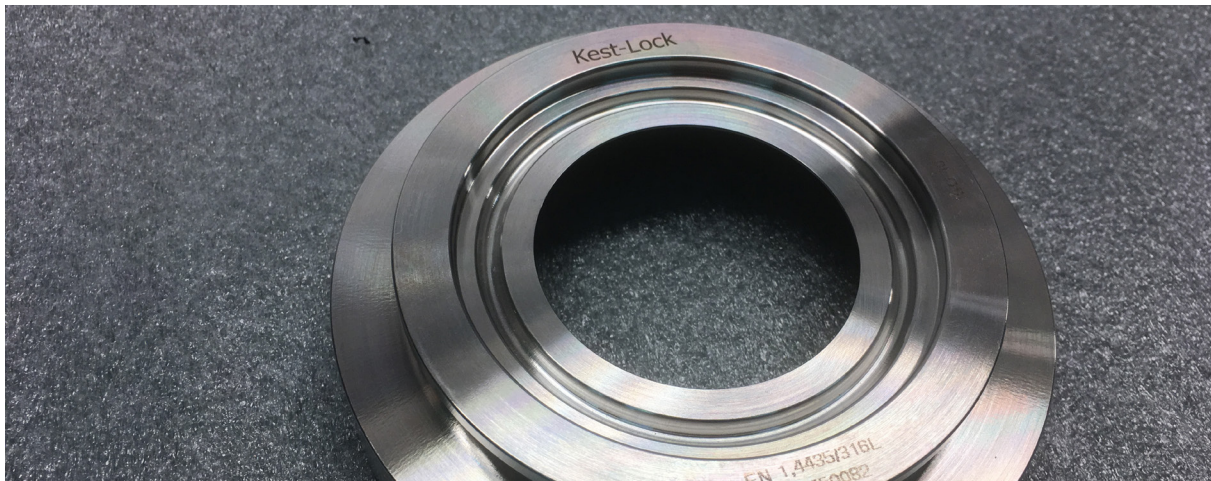


Kest-Lock Tank Flange

SPECIFICATIONS

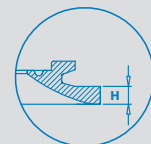
Material Grade	EN 1.4435	ASTM 316L or ASME 316L
Material requirement	EN 10 272/10028-7	A479/A240 or SA479/SA240
Documentation	Heat Certificate 3.1 acc. to EN 10 204	
Surface finish	Ra≤[0.5 μm] [20 μin] internal (polished)	Ra≤[1.6 μm] [63 μin] outer
Design Temperature	[-80°C to 200°C] [112°F to 392°F]	
Design Pressure	[-1 bar(g) to + 10 bar(g)] [-14.5 psi to 145 psi]	
Marking	Marked with material grade and heat number	
Packing	Sealed in vacuum plastic bag, labelled with art. number and packed in a box	
Gaskets	The Kest-Lock is designed for use of standard gaskets acc. to ISO 2852 type B	
Standards	The Kest-Lock is designed for clamp couplings acc ISO 2852, ASME BPE, DIN 32 676	
Quality Assurance	Each product is controlled and tested acc. to Kest Technology quality assurance system	



The Kest-Lock tank flange is available in five different heights to fit your tank geometry, from 6 mm to 51 mm.

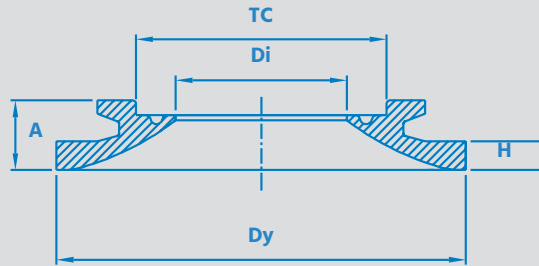
H 6 mm / 0.236 in
H 12 mm / 0.472 in
H 25 mm / 0.984 in

H 38 mm / 1.496 in
H 51 mm / 2.008 in



Kest-Lock Tank Flange

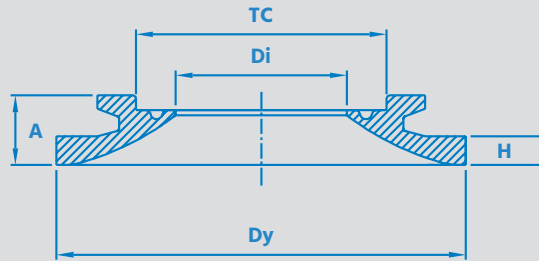
**ASTM
A 269/270**



REF. NO	PRODUCT CODE	TC mm [in]	DY mm [in]	DI mm [in]	H mm [in]	A mm [in]
TC 1/2" (TC25) - For pipe ASTM 1/2" (12.7x1.65)						
100068	KLTF-TC25-ASTM0.5-55-6	25 [0.984]	55 [2.165]	9.4 [0.370]	6 [0.236]	14.5 [0.571]
100069	KLTF-TC25-ASTM0.5-55-12	25 [0.984]	55 [2.165]	9.4 [0.370]	12 [0.472]	20.5 [0.807]
100070	KLTF-TC25-ASTM0.5-55-25	25 [0.984]	55 [2.165]	9.4 [0.370]	25 [0.984]	33.5 [1.319]
100071	KLTF-TC25-ASTM0.5-55-38	25 [0.984]	55 [2.165]	9.4 [0.370]	38 [1.496]	46.5 [1.831]
100072	KLTF-TC25-ASTM0.5-55-51	25 [0.984]	55 [2.165]	9.4 [0.370]	51 [2.008]	59.5 [2.343]
TC 3/4" (TC25) - For pipe ASTM 3/4" (19.1x1.65)						
100073	KLTF-TC25-ASTM0.75-55-6	25 [0.984]	55 [2.165]	15.8 [0.622]	6 [0.236]	14.5 [0.571]
100074	KLTF-TC25-ASTM0.75-55-12	25 [0.984]	55 [2.165]	15.8 [0.622]	12 [0.472]	20.5 [0.807]
100075	KLTF-TC25-ASTM0.75-55-25	25 [0.984]	55 [2.165]	15.8 [0.622]	25 [0.984]	33.5 [1.319]
100076	KLTF-TC25-ASTM0.75-55-38	25 [0.984]	55 [2.165]	15.8 [0.622]	38 [1.496]	46.5 [1.831]
100077	KLTF-TC25-ASTM0.75-55-51	25 [0.984]	55 [2.165]	15.8 [0.622]	51 [2.008]	59.5 [2.343]
TC 1" (TC50.5) - For pipe ASTM 1" (25.4x1.65)						
100078	KLTF-TC50-ASTM1.0-85-6	50.5 [1.988]	85 [3.346]	22.1 [0.870]	6 [0.236]	14.5 [0.571]
100079	KLTF-TC50-ASTM1.0-85-12	50.5 [1.988]	85 [3.346]	22.1 [0.870]	12 [0.472]	20.5 [0.807]
100080	KLTF-TC50-ASTM1.0-85-25	50.5 [1.988]	85 [3.346]	22.1 [0.870]	25 [0.984]	33.5 [1.319]
100081	KLTF-TC50-ASTM1.0-85-38	50.5 [1.988]	85 [3.346]	22.1 [0.870]	38 [1.496]	46.5 [1.831]
100082	KLTF-TC50-ASTM1.0-85-51	50.5 [1.988]	85 [3.346]	22.1 [0.870]	51 [2.008]	59.5 [2.343]

Kest-Lock Tank Flange

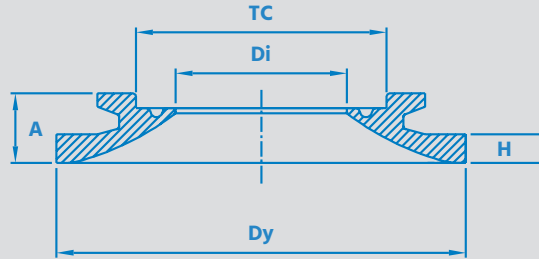
**ASTM
A 269/270**



REF. NO	PRODUCT CODE	TC mm [in]	DY mm [in]	DI mm [in]	H mm [in]	A mm [in]
TC 1 1/2" (TC50.5) - For pipe ASTM 1 1/2" (38.1x1.65)						
100083	KLTF-TC50-ASTM1.5-85-6	50.5 [1.988]	85 [3.346]	34.8 [1.370]	6 [0.236]	14.5 [0.571]
100084	KLTF-TC50-ASTM1.5-85-12	50.5 [1.988]	85 [3.346]	34.8 [1.370]	12 [0.472]	20.5 [0.807]
100085	KLTF-TC50-ASTM1.5-85-25	50.5 [1.988]	85 [3.346]	34.8 [1.370]	25 [0.984]	33.5 [1.319]
100086	KLTF-TC50-ASTM1.5-85-38	50.5 [1.988]	85 [3.346]	34.8 [1.370]	38 [1.496]	46.5 [1.831]
100087	KLTF-TC50-ASTM1.5-85-51	50.5 [1.988]	85 [3.346]	34.8 [1.370]	51 [2.008]	59.5 [2.343]
TC 2" (TC64) - For pipe ASTM 2" (50.8x1.65)						
100088	KLTF-TC64-ASTM2.0-100-6	64 [2.520]	100 [3.937]	47.5 [1.870]	6 [0.236]	14.5 [0.571]
100089	KLTF-TC64-ASTM2.0-100-12	64 [2.520]	100 [3.937]	47.5 [1.870]	12 [0.472]	20.5 [0.807]
100090	KLTF-TC64-ASTM2.0-100-25	64 [2.520]	100 [3.937]	47.5 [1.870]	25 [0.984]	33.5 [1.319]
100091	KLTF-TC64-ASTM2.0-100-38	64 [2.520]	100 [3.937]	47.5 [1.870]	38 [1.496]	46.5 [1.831]
100092	KLTF-TC64-ASTM2.0-100-51	64 [2.520]	100 [3.937]	47.5 [1.870]	51 [2.008]	59.5 [2.343]
TC 2.5" (TC77.5) - For pipe ASTM 2.5" (63.5x1.65)						
100093	KLTF-TC77-ASTM2.5-112-6	77.5 [3.051]	112 [4.409]	60.2 [2.370]	6 [0.236]	14.5 [0.571]
100094	KLTF-TC77-ASTM2.5-112-12	77.5 [3.051]	112 [4.409]	60.2 [2.370]	12 [0.472]	20.5 [0.807]
100095	KLTF-TC77-ASTM2.5-112-25	77.5 [3.051]	112 [4.409]	60.2 [2.370]	25 [0.984]	33.5 [1.319]
100096	KLTF-TC77-ASTM2.5-112-38	77.5 [3.051]	112 [4.409]	60.2 [2.370]	38 [1.496]	46.5 [1.831]
100097	KLTF-TC77-ASTM2.5-112-51	77.5 [3.051]	112 [4.409]	60.2 [2.370]	51 [2.008]	59.5 [2.343]

Kest-Lock Tank Flange

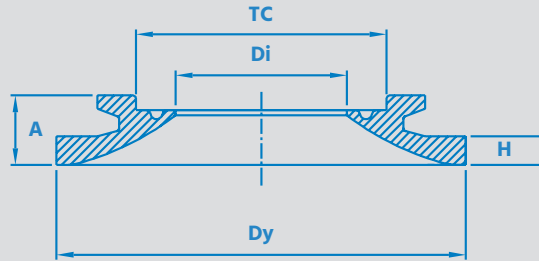
**ASTM
A 269/270**



REF. NO	PRODUCT CODE	TC	DY	DI	H	A
		mm [in]	mm [in]	mm [in]	mm [in]	mm [in]
TC 3" (TC91) - For pipe ASTM 3" (76.2x1.65)						
100098	KLTF-TC91-ASTM3.0-131-6	91 [3.583]	131 [5.157]	72.9 [2.870]	6 [0.236]	14.5 [0.571]
100099	KLTF-TC91-ASTM3.0-131-12	91 [3.583]	131 [5.157]	72.9 [2.870]	12 [0.472]	20.5 [0.807]
100100	KLTF-TC91-ASTM3.0-131-25	91 [3.583]	131 [5.157]	72.9 [2.870]	25 [0.984]	33.5 [1.319]
100101	KLTF-TC91-ASTM3.0-131-38	91 [3.583]	131 [5.157]	72.9 [2.870]	38 [1.496]	46.5 [1.831]
100102	KLTF-TC91-ASTM3.0-131-51	91 [3.583]	131 [5.157]	72.9 [2.870]	51 [2.008]	59.5 [2.343]
TC 4"(TC119) - For pipe ASTM 4" (101.6x2.1)						
100637	KLTF-TC119-ASTM-4.0-159-6	119 [4.685]	159 [6.260]	97.4 [3.835]	6 [0.236]	14.5 [0.571]
100638	KLTF-TC119-ASTM-4.0-159-12	119 [4.685]	159 [6.260]	97.4 [3.835]	12 [0.472]	20.5 [0.807]
101621	KLTF-TC119-ASTM-4.0-159-25	119 [4.685]	159 [6.260]	97.4 [3.835]	25 [0.984]	33.5 [1.319]
101109	KLTF-TC119-ASTM-4.0-159-38	119 [4.685]	159 [6.260]	97.4 [3.835]	38 [1.496]	46.5 [1.831]
101622	KLTF-TC119-ASTM-4.0-159-51	119 [4.685]	159 [6.260]	97.4 [3.835]	51 [2.008]	59.5 [2.343]

Kest-Lock Tank Flange

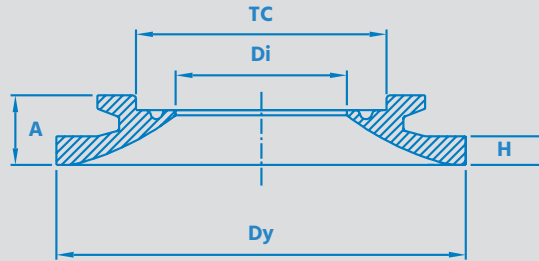
ISO
1127



REF. NO	PRODUCT CODE	TC mm [in]	DY mm [in]	DI mm [in]	H mm [in]	A mm [in]
TC25 - For pipe ISO DN8 (13.5x1.6)						
100104	KLTF-TC25-ISO8-55-6	25 [0.984]	55 [2.165]	10.3 [0.406]	6 [0.236]	14.5 [0.571]
100105	KLTF-TC25-ISO8-55-12	25 [0.984]	55 [2.165]	10.3 [0.406]	12 [0.472]	20.5 [0.807]
100106	KLTF-TC25-ISO8-55-25	25 [0.984]	55 [2.165]	10.3 [0.406]	25 [0.984]	33.5 [1.319]
100107	KLTF-TC25-ISO8-55-38	25 [0.984]	55 [2.165]	10.3 [0.406]	38 [1.496]	46.5 [1.831]
100108	KLTF-TC25-ISO8-55-51	25 [0.984]	55 [2.165]	10.3 [0.406]	51 [2.008]	59.5 [2.343]
TC34 - For pipe ISO DN10 (17.2x1.6)						
100109	KLTF-TC34-ISO10-70-6	34 [1.339]	70 [2.756]	14 [0.551]	6 [0.236]	14.5 [0.571]
100110	KLTF-TC34-ISO10-70-12	34 [1.339]	70 [2.756]	14 [0.551]	12 [0.472]	20.5 [0.807]
100111	KLTF-TC34-ISO10-70-25	34 [1.339]	70 [2.756]	14 [0.551]	25 [0.984]	33.5 [1.319]
100112	KLTF-TC34-ISO10-70-38	34 [1.339]	70 [2.756]	14 [0.551]	38 [1.496]	46.5 [1.831]
100113	KLTF-TC34-ISO10-70-51	34 [1.339]	70 [2.756]	14 [0.551]	51 [2.008]	59.5 [2.343]
TC34 - For pipe ISO DN15 (21.3x1.6)						
100114	KLTF-TC34-ISO15-70-6	34 [1.339]	70 [2.756]	18.1 [0.713]	6 [0.236]	14.5 [0.571]
100115	KLTF-TC34-ISO15-70-12	34 [1.339]	70 [2.756]	18.1 [0.713]	12 [0.472]	20.5 [0.807]
100116	KLTF-TC34-ISO15-70-25	34 [1.339]	70 [2.756]	18.1 [0.713]	25 [0.984]	33.5 [1.319]
100117	KLTF-TC34-ISO15-70-38	34 [1.339]	70 [2.756]	18.1 [0.713]	38 [1.496]	46.5 [1.831]
100118	KLTF-TC34-ISO15-70-51	34 [1.339]	70 [2.756]	18.1 [0.713]	51 [2.008]	59.5 [2.343]

Kest-Lock Tank Flange

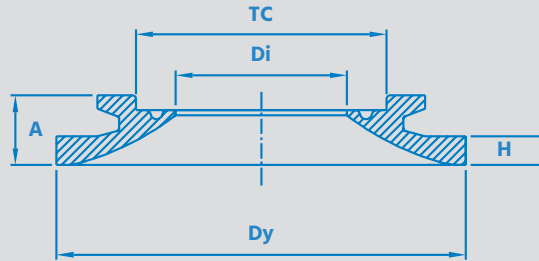
ISO
1127



REF. NO	PRODUCT CODE	TC mm [in]	DY mm [in]	DI mm [in]	H mm [in]	A mm [in]
TC50.5 - For pipe ISO DN20 (26.9x1.6)						
100119	KLTF-TC50-ISO20-85-6	50.5 [1.988]	85 [3.346]	23.7 [0.933]	6 [0.236]	14.5 [0.571]
100120	KLTF-TC50-ISO20-85-12	50.5 [1.988]	85 [3.346]	23.7 [0.933]	12 [0.472]	20.5 [0.807]
100121	KLTF-TC50-ISO20-85-25	50.5 [1.988]	85 [3.346]	23.7 [0.933]	25 [0.984]	33.5 [1.319]
100122	KLTF-TC50-ISO20-85-38	50.5 [1.988]	85 [3.346]	23.7 [0.933]	38 [1.496]	46.5 [1.831]
100123	KLTF-TC50-ISO20-85-51	50.5 [1.988]	85 [3.346]	23.7 [0.933]	51 [2.008]	59.5 [2.343]
TC50.5 - For pipe ISO DN25 (33.7x2.0)						
100124	KLTF-TC50-ISO25-85-6	50.5 [1.988]	85 [3.346]	29.7 [1.169]	6 [0.236]	14.5 [0.571]
100125	KLTF-TC50-ISO25-85-12	50.5 [1.988]	85 [3.346]	29.7 [1.169]	12 [0.472]	20.5 [0.807]
100126	KLTF-TC50-ISO25-85-25	50.5 [1.988]	85 [3.346]	29.7 [1.169]	25 [0.984]	33.5 [1.319]
100127	KLTF-TC50-ISO25-85-38	50.5 [1.988]	85 [3.346]	29.7 [1.169]	38 [1.496]	46.5 [1.831]
100128	KLTF-TC50-ISO25-85-51	50.5 [1.988]	85 [3.346]	29.7 [1.169]	51 [2.008]	59.5 [2.343]
TC64 - For pipe ISO DN32 (42.4x2.0)						
100129	KLTF-TC64-ISO32-100-6	64 [2.520]	100 [3.937]	38.4 [1.512]	6 [0.236]	14.5 [0.571]
100130	KLTF-TC64-ISO32-100-12	64 [2.520]	100 [3.937]	38.4 [1.512]	12 [0.472]	20.5 [0.807]
100131	KLTF-TC64-ISO32-100-25	64 [2.520]	100 [3.937]	38.4 [1.512]	25 [0.984]	33.5 [1.319]
100132	KLTF-TC64-ISO32-100-38	64 [2.520]	100 [3.937]	38.4 [1.512]	38 [1.496]	46.5 [1.831]
100133	KLTF-TC64-ISO32-100-51	64 [2.520]	100 [3.937]	38.4 [1.512]	51 [2.008]	59.5 [2.343]

Kest-Lock Tank Flange

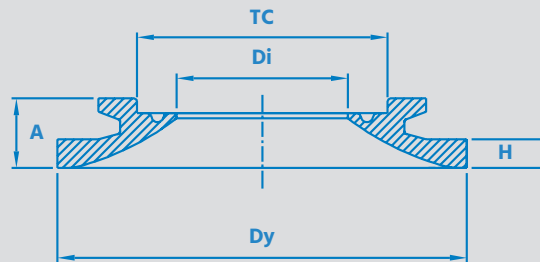
ISO
1127



REF. NO	PRODUCT CODE	TC mm [in]	DY mm [in]	DI mm [in]	H mm [in]	A mm [in]
TC64 - For pipe ISO DN40 (48.3x2.0)						
100134	KLTF-TC64-ISO40-100-6	64 [2.520]	100 [3.937]	44.3 [1.744]	6 [0.236]	14.5 [0.571]
100135	KLTF-TC64-ISO40-100-12	64 [2.520]	100 [3.937]	44.3 [1.744]	12 [0.472]	20.5 [0.807]
100136	KLTF-TC64-ISO40-100-25	64 [2.520]	100 [3.937]	44.3 [1.744]	25 [0.984]	33.5 [1.319]
100137	KLTF-TC64-ISO40-100-38	64 [2.520]	100 [3.937]	44.3 [1.744]	38 [1.496]	46.5 [1.831]
100138	KLTF-TC64-ISO40-100-51	64 [2.520]	100 [3.937]	44.3 [1.744]	51 [2.008]	59.5 [2.343]
TC77.5 - For pipe ISO DN50 (60.3x2.0)						
100139	KLTF-TC77-ISO50-112-6	77.5 [3.051]	112 [4.409]	56.3 [2.216]	6 [0.236]	14.5 [0.571]
100140	KLTF-TC77-ISO50-112-12	77.5 [3.051]	112 [4.409]	56.3 [2.216]	12 [0.472]	20.5 [0.807]
100141	KLTF-TC77-ISO50-112-25	77.5 [3.051]	112 [4.409]	56.3 [2.216]	25 [0.984]	33.5 [1.319]
100142	KLTF-TC77-ISO50-112-38	77.5 [3.051]	112 [4.409]	56.3 [2.216]	38 [1.496]	46.5 [1.831]
100143	KLTF-TC77-ISO50-112-51	77.5 [3.051]	112 [4.409]	56.3 [2.216]	51 [2.008]	59.5 [2.343]
TC91, For pipe ISO DN65 (76.1x2.3)						
100144	KLTF-TC91-ISO65-131-6	91 [3.583]	131 [5.157]	71.5 [2.815]	6 [0.236]	14.5 [0.571]
100145	KLTF-TC91-ISO65-131-12	91 [3.583]	131 [5.157]	71.5 [2.815]	12 [0.472]	20.5 [0.807]
100146	KLTF-TC91-ISO65-131-25	91 [3.583]	131 [5.157]	71.5 [2.815]	25 [0.984]	33.5 [1.319]
100147	KLTF-TC91-ISO65-131-38	91 [3.583]	131 [5.157]	71.5 [2.815]	38 [1.496]	46.5 [1.831]
100148	KLTF-TC91-ISO65-131-51	91 [3.583]	131 [5.157]	71.5 [2.815]	51 [2.008]	59.5 [2.343]

Kest-Lock Tank Flange

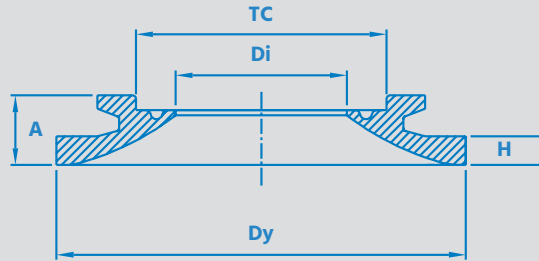
ISO
1127



REF. NO	PRODUCT CODE	TC mm [in]	DY mm [in]	DI mm [in]	H mm [in]	A mm [in]
TC106 - For pipe ISO DN80 (88.9x2.3)						
100279	KLTF-TC106-ISO80-146-6	106 [4.173]	146 [5.748]	84.3 [3.319]	6 [0.236]	14.5 [0.571]
100280	KLTF-TC106-ISO80-146-12	106 [4.173]	146 [5.748]	84.3 [3.319]	12 [0.472]	20.5 [0.807]
100247	KLTF-TC106-ISO80-146-25	106 [4.173]	146 [5.748]	84.3 [3.319]	25 [0.984]	33.5 [1.319]
100250	KLTF-TC106-ISO80-146-38	106 [4.173]	146 [5.748]	84.3 [3.319]	38 [1.496]	46.5 [1.831]
101623	KLTF-TC106-ISO80-146-51	106 [4.173]	146 [5.748]	84.3 [3.319]	51 [2.008]	59.5 [2.343]

Kest-Lock Tank Flange

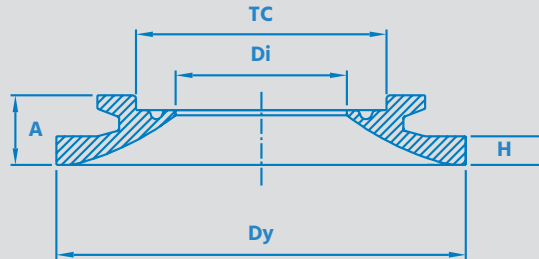
EN 10357-A
(DIN 11850-R2)



REF. NO	PRODUCT CODE	TC mm [in]	DY mm [in]	DI mm [in]	H mm [in]	A mm [in]
TC34 - For pipe EN DN10 (13 x 1.5)						
101687	KLTF-TC34-EN10-70-6	34 [1.339]	70 [2.756]	10 [0.394]	6 [0.236]	14.5 [0.571]
101688	KLTF-TC34-EN10-70-12	34 [1.339]	70 [2.756]	10 [0.394]	12 [0.472]	20.5 [0.807]
101689	KLTF-TC34-EN10-70-25	34 [1.339]	70 [2.756]	10 [0.394]	25 [0.984]	33.5 [1.319]
101690	KLTF-TC34-EN10-70-38	34 [1.339]	70 [2.756]	10 [0.394]	38 [1.496]	46.5 [1.831]
101691	KLTF-TC34-EN10-70-51	34 [1.339]	70 [2.756]	10 [0.394]	51 [2.008]	59.5 [2.343]
TC34 - For pipe EN DN15 (19 x 1.5)						
101692	KLTF-TC34-EN15-70-6	34 [1.339]	70 [2.756]	16 [0.630]	6 [0.236]	14.5 [0.571]
101693	KLTF-TC34-EN15-70-12	34 [1.339]	70 [2.756]	16 [0.630]	12 [0.472]	20.5 [0.807]
101694	KLTF-TC34-EN15-70-25	34 [1.339]	70 [2.756]	16 [0.630]	25 [0.984]	33.5 [1.319]
101695	KLTF-TC34-EN15-70-38	34 [1.339]	70 [2.756]	16 [0.630]	38 [1.496]	46.5 [1.831]
101696	KLTF-TC34-EN15-70-51	34 [1.339]	70 [2.756]	16 [0.630]	51 [2.008]	59.5 [2.343]
TC34 - For pipe EN DN20 (23 x 1.5)						
101683	KLTF-TC34-EN20-70-6	34 [1.339]	70 [2.756]	20 [0.787]	6 [0.236]	14.5 [0.571]
101684	KLTF-TC34-EN20-70-12	34 [1.339]	70 [2.756]	20 [0.787]	12 [0.472]	20.5 [0.807]
101685	KLTF-TC34-EN20-70-25	34 [1.339]	70 [2.756]	20 [0.787]	25 [0.984]	33.5 [1.319]
101141	KLTF-TC34-EN20-70-38	34 [1.339]	70 [2.756]	20 [0.787]	38 [1.496]	46.5 [1.831]
101686	KLTF-TC34-EN20-70-51	34 [1.339]	70 [2.756]	20 [0.787]	51 [2.008]	59.5 [2.343]

Kest-Lock Tank Flange

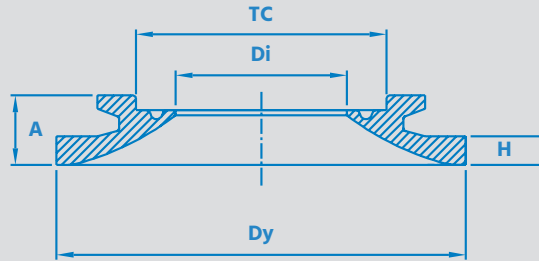
EN 10357-A
(DIN 11850-R2)



REF. NO	PRODUCT CODE	TC mm [in]	DY mm [in]	DI mm [in]	H mm [in]	A mm [in]
TC50.5 - For pipe EN DN25 (29 x 1.5)						
101274	KLTF-TC50-EN25-85-6	50.5 [1.988]	85 [3.346]	26 [1.024]	6 [0.236]	14.5 [0.571]
101680	KLTF-TC50-EN25-85-12	50.5 [1.988]	85 [3.346]	26 [1.024]	12 [0.472]	20.5 [0.807]
101681	KLTF-TC50-EN25-85-25	50.5 [1.988]	85 [3.346]	26 [1.024]	25 [0.984]	33.5 [1.319]
101142	KLTF-TC50-EN25-85-38	50.5 [1.988]	85 [3.346]	26 [1.024]	38 [1.496]	46.5 [1.831]
101682	KLTF-TC50-EN25-85-51	50.5 [1.988]	85 [3.346]	26 [1.024]	51 [2.008]	59.5 [2.343]
TC50.5 - For pipe EN DN32 (35 x 1.5)						
101677	KLTF-TC50-EN32-85-6	50.5 [1.988]	85 [3.346]	32 [1.260]	6 [0.236]	14.5 [0.571]
101678	KLTF-TC50-EN32-85-12	50.5 [1.988]	85 [3.346]	32 [1.260]	12 [0.472]	20.5 [0.807]
101143	KLTF-TC50-EN32-85-25	50.5 [1.988]	85 [3.346]	32 [1.260]	25 [0.984]	33.5 [1.319]
101679	KLTF-TC50-EN32-85-38	50.5 [1.988]	85 [3.346]	32 [1.260]	38 [1.496]	46.5 [1.831]
101457	KLTF-TC50-EN32-85-51	50.5 [1.988]	85 [3.346]	32 [1.260]	51 [2.008]	59.5 [2.343]
TC50.5 - For pipe EN DN40 (41 x 1.5)						
101673	KLTF-TC50-EN40-85-6	50.5 [1.988]	85 [3.346]	38 [1.496]	6 [0.236]	14.5 [0.571]
101144	KLTF-TC50-EN40-85-12	50.5 [1.988]	85 [3.346]	38 [1.496]	12 [0.472]	20.5 [0.807]
101624	KLTF-TC50-EN40-85-25	50.5 [1.988]	85 [3.346]	38 [1.496]	25 [0.984]	33.5 [1.319]
101675	KLTF-TC50-EN40-85-38	50.5 [1.988]	85 [3.346]	38 [1.496]	38 [1.496]	46.5 [1.831]
101676	KLTF-TC50-EN40-85-51	50.5 [1.988]	85 [3.346]	38 [1.496]	51 [2.008]	59.5 [2.343]

Kest-Lock Tank Flange

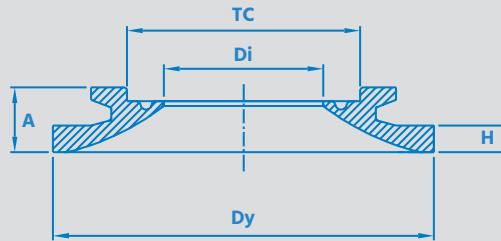
EN 10357-A
(DIN 11850-R2)



REF. NO	PRODUCT CODE	TC mm [in]	DY mm [in]	DI mm [in]	H mm [in]	A mm [in]
TC64 - For pipe EN DN50 (53 x 1.5)						
101665	KLTF-TC64-EN50-100-6	64 [2.520]	100 [3.937]	50 [1.969]	6 [0.236]	14.5 [0.571]
101145	KLTF-TC64-EN50-100-12	64 [2.520]	100 [3.937]	50 [1.969]	12 [0.472]	20.5 [0.807]
101666	KLTF-TC64-EN50-100-25	64 [2.520]	100 [3.937]	50 [1.969]	25 [0.984]	33.5 [1.319]
101667	KLTF-TC64-EN50-100-38	64 [2.520]	100 [3.937]	50 [1.969]	38 [1.496]	46.5 [1.831]
101146	KLTF-TC64-EN50-100-51	64 [2.520]	100 [3.937]	50 [1.969]	51 [2.008]	59.5 [2.343]
TC91 - For pipe EN DN65 (70 x 2.0)						
101668	KLTF-TC91-EN65-131-6	91 [3.583]	131 [5.157]	66 [2.598]	6 [0.236]	14.5 [0.571]
101669	KLTF-TC91-EN65-131-12	91 [3.583]	131 [5.157]	66 [2.598]	12 [0.472]	20.5 [0.807]
101670	KLTF-TC91-EN65-131-25	91 [3.583]	131 [5.157]	66 [2.598]	25 [0.984]	33.5 [1.319]
101671	KLTF-TC91-EN65-131-38	91 [3.583]	131 [5.157]	66 [2.598]	38 [1.496]	46.5 [1.831]
101672	KLTF-TC91-EN65-131-51	91 [3.583]	131 [5.157]	66 [2.598]	51 [2.008]	59.5 [2.343]
TC106 - For pipe EN DN80 (85 x 2.0)						
101432	KLTF-TC106-EN80-146-6	106 [4.173]	146 [5.748]	81 [3.189]	6 [0.236]	14.5 [0.571]
101433	KLTF-TC106-EN80-146-12	106 [4.173]	146 [5.748]	81 [3.189]	12 [0.472]	20.5 [0.807]
101434	KLTF-TC106-EN80-146-25	106 [4.173]	146 [5.748]	81 [3.189]	25 [0.984]	33.5 [1.319]
101663	KLTF-TC106-EN80-146-38	106 [4.173]	146 [5.748]	81 [3.189]	38 [1.496]	46.5 [1.831]
101664	KLTF-TC106-EN80-146-51	106 [4.173]	146 [5.748]	81 [3.189]	51 [2.008]	59.5 [2.343]

Kest-Lock Tank Flange

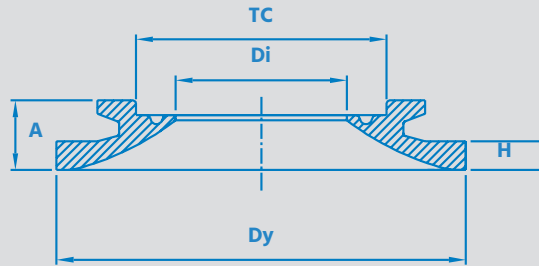
**SMS
3008**



REF. NO	PRODUCT CODE	TC mm [in]	DY mm [in]	DI mm [in]	H mm [in]	A mm [in]
TC25 - For pipe SMS 12x1.0						
100033	KLTF-TC25-SMS12-55-6	25 [0.984]	55 [2.165]	10 [0.394]	6 [0.236]	14.5 [0.571]
100034	KLTF-TC25-SMS12-55-12	25 [0.984]	55 [2.165]	10 [0.394]	12 [0.472]	20.5 [0.807]
100035	KLTF-TC25-SMS12-55-25	25 [0.984]	55 [2.165]	10 [0.394]	25 [0.984]	33.5 [1.319]
100036	KLTF-TC25-SMS12-55-38	25 [0.984]	55 [2.165]	10 [0.394]	38 [1.496]	46.5 [1.831]
100037	KLTF-TC25-SMS12-55-51	25 [0.984]	55 [2.165]	10 [0.394]	51 [2.008]	59.5 [2.343]
TC25 - For pipe SMS 18x1.5						
100038	KLTF-TC25-SMS18-55-6	25 [0.984]	55 [2.165]	15 [0.591]	6 [0.236]	14.5 [0.571]
100039	KLTF-TC25-SMS18-55-12	25 [0.984]	55 [2.165]	15 [0.591]	12 [0.472]	20.5 [0.807]
100040	KLTF-TC25-SMS18-55-25	25 [0.984]	55 [2.165]	15 [0.591]	25 [0.984]	33.5 [1.319]
100041	KLTF-TC25-SMS18-55-38	25 [0.984]	55 [2.165]	15 [0.591]	38 [1.496]	46.5 [1.831]
100042	KLTF-TC25-SMS18-55-51	25 [0.984]	55 [2.165]	15 [0.591]	51 [2.008]	59.5 [2.343]
TC50.5 - For pipe SMS 25x1.2						
100043	KLTF-TC50-SMS25-85-6	50.5 [1.988]	85 [3.346]	22.6 [0.890]	6 [0.236]	14.5 [0.571]
100044	KLTF-TC50-SMS25-85-12	50.5 [1.988]	85 [3.346]	22.6 [0.890]	12 [0.472]	20.5 [0.807]
100045	KLTF-TC50-SMS25-85-25	50.5 [1.988]	85 [3.346]	22.6 [0.890]	25 [0.984]	33.5 [1.319]
100046	KLTF-TC50-SMS25-85-38	50.5 [1.988]	85 [3.346]	22.6 [0.890]	38 [1.496]	46.5 [1.831]
100047	KLTF-TC50-SMS25-85-51	50.5 [1.988]	85 [3.346]	22.6 [0.890]	51 [2.008]	59.5 [2.343]

Kest-Lock Tank Flange

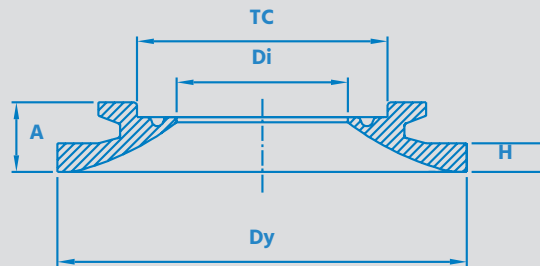
**SMS
3008**



REF. NO	PRODUCT CODE	TC mm [in]	DY mm [in]	DI mm [in]	H mm [in]	A mm [in]
TC50.5 - For pipe SMS 38x1.2						
100048	KLTF-TC50-SMS38-85-6	50.5 [1.988]	85 [3.346]	35.6 [1.402]	6 [0.236]	14.5 [0.571]
100049	KLTF-TC50-SMS38-85-12	50.5 [1.988]	85 [3.346]	35.6 [1.402]	12 [0.472]	20.5 [0.807]
100050	KLTF-TC50-SMS38-85-25	50.5 [1.988]	85 [3.346]	35.6 [1.402]	25 [0.984]	33.5 [1.319]
100051	KLTF-TC50-SMS38-85-38	50.5 [1.988]	85 [3.346]	35.6 [1.402]	38 [1.496]	46.5 [1.831]
100052	KLTF-TC50-SMS38-85-51	50.5 [1.988]	85 [3.346]	35.6 [1.402]	51 [2.008]	59.5 [2.343]
TC64 - For pipe SMS 51x1.2						
100053	KLTF-TC64-SMS51-100-6	64 [2.520]	100 [3.937]	48.6 [1.913]	6 [0.236]	14.5 [0.571]
100054	KLTF-TC64-SMS51-100-12	64 [2.520]	100 [3.937]	48.6 [1.913]	12 [0.472]	20.5 [0.807]
100055	KLTF-TC64-SMS51-100-25	64 [2.520]	100 [3.937]	48.6 [1.913]	25 [0.984]	33.5 [1.319]
100056	KLTF-TC64-SMS51-100-38	64 [2.520]	100 [3.937]	48.6 [1.913]	38 [1.496]	46.5 [1.831]
100057	KLTF-TC64-SMS51-100-51	64 [2.520]	100 [3.937]	48.6 [1.913]	51 [2.008]	59.5 [2.343]
TC77.5 - For pipe SMS 63.5x1.6						
100058	KLTF-TC77-SMS63-112-6	77.5 [3.051]	112 [4.409]	60.3 [2.374]	6 [0.236]	14.5 [0.571]
100059	KLTF-TC77-SMS63-112-12	77.5 [3.051]	112 [4.409]	60.3 [2.374]	12 [0.472]	20.5 [0.807]
100060	KLTF-TC77-SMS63-112-25	77.5 [3.051]	112 [4.409]	60.3 [2.374]	25 [0.984]	33.5 [1.319]
100061	KLTF-TC77-SMS63-112-38	77.5 [3.051]	112 [4.409]	60.3 [2.374]	38 [1.496]	46.5 [1.831]
100062	KLTF-TC77-SMS63-112-51	77.5 [3.051]	112 [4.409]	60.3 [2.374]	51 [2.008]	59.5 [2.343]

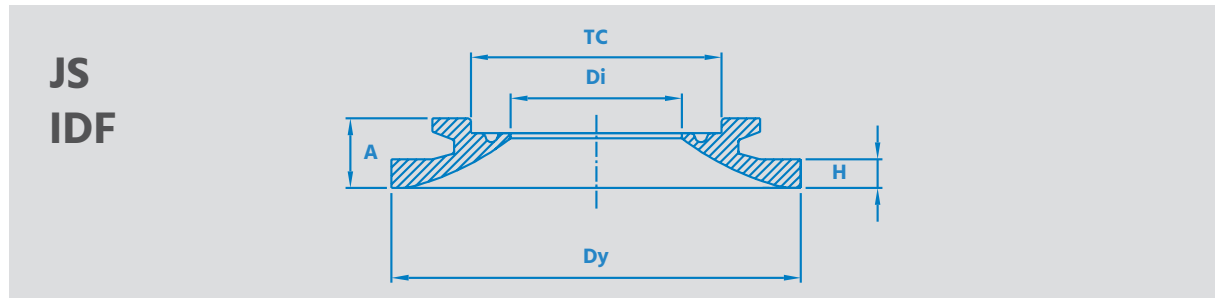
Kest-Lock Tank Flange

**SMS
3008**



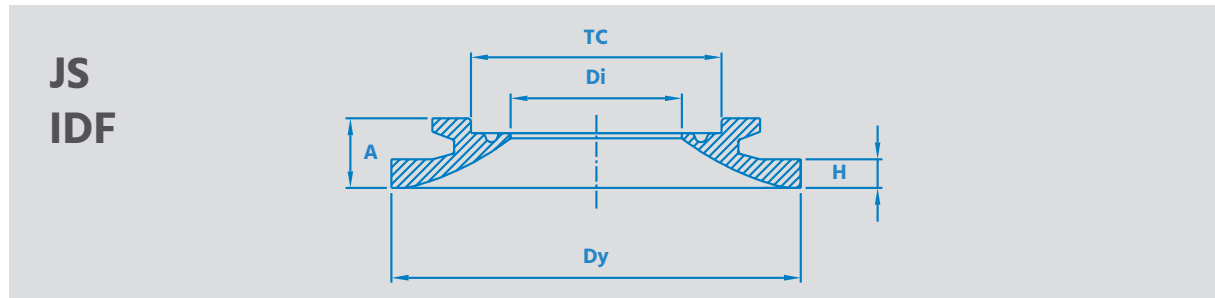
REF. NO	PRODUCT CODE	TC mm [in]	DY mm [in]	DI mm [in]	H mm [in]	A mm [in]
TC91 - For pipe SMS 76.1x1.6						
100063	KLTF-TC91-SMS76-131-6	91 [3.583]	131 [5.157]	72.9 [2.870]	6 [0.236]	14.5 [0.571]
100064	KLTF-TC91-SMS76-131-12	91 [3.583]	131 [5.157]	72.9 [2.870]	12 [0.472]	20.5 [0.807]
100065	KLTF-TC91-SMS76-131-25	91 [3.583]	131 [5.157]	72.9 [2.870]	25 [0.984]	33.5 [1.319]
100066	KLTF-TC91-SMS76-131-38	91 [3.583]	131 [5.157]	72.9 [2.870]	38 [1.496]	46.5 [1.831]
100067	KLTF-TC91-SMS76-131-51	91 [3.583]	131 [5.157]	72.9 [2.870]	51 [2.008]	59.5 [2.343]

Kest-Lock Tank Flange



REF. NO	PRODUCT CODE	TC mm [in]	DY mm [in]	DI mm [in]	H mm [in]	A mm [in]
TC50 - For pipe JS1.0 (25.4x1.2)						
100287	KLTF-TC50-JS1.0S-85-6	50.5 [1.988]	85 [3.346]	23 [0.906]	6 [0.236]	14.5 [0.571]
100825	KLTF-TC50-JS1.0S-85-12	50.5 [1.988]	85 [3.346]	23 [0.906]	12 [0.472]	20.5 [0.807]
101697	KLTF-TC50-JS1.0S-85-25	50.5 [1.988]	85 [3.346]	23 [0.906]	25 [0.984]	33.5 [1.319]
101698	KLTF-TC50-JS1.0S-85-38	50.5 [1.988]	85 [3.346]	23 [0.906]	38 [1.496]	46.5 [1.831]
101699	KLTF-TC50-JS1.0S-85-51	50.5 [1.988]	85 [3.346]	23 [0.906]	51 [2.008]	59.5 [2.343]
TC50 - For pipe JS1.25 (31.8x1.2)						
100288	KLTF-TC50-JS1.25S-85-6	50.5 [1.988]	85 [3.346]	29.4 [1.157]	6 [0.236]	14.5 [0.571]
101198	KLTF-TC50-JS1.25S-85-12	50.5 [1.988]	85 [3.346]	29.4 [1.157]	12 [0.472]	20.5 [0.807]
101700	KLTF-TC50-JS1.25S-85-25	50.5 [1.988]	85 [3.346]	29.4 [1.157]	25 [0.984]	33.5 [1.319]
101701	KLTF-TC50-JS1.25S-85-38	50.5 [1.988]	85 [3.346]	29.4 [1.157]	38 [1.496]	46.5 [1.831]
101702	KLTF-TC50-JS1.25S-85-51	50.5 [1.988]	85 [3.346]	29.4 [1.157]	51 [2.008]	59.5 [2.343]
TC50 - For pipe JS1.5 (38.1x1.2)						
100339	KLTF-TC50-JS1.5S-85-6	50.5 [1.988]	85 [3.346]	35.7 [1.406]	6 [0.236]	14.5 [0.571]
101197	KLTF-TC50-JS1.5S-85-12	50.5 [1.988]	85 [3.346]	35.7 [1.406]	12 [0.472]	20.5 [0.807]
101415	KLTF-TC50-JS1.5S-85-25	50.5 [1.988]	85 [3.346]	35.7 [1.406]	25 [0.984]	33.5 [1.319]
101703	KLTF-TC50-JS1.5S-85-38	50.5 [1.988]	85 [3.346]	35.7 [1.406]	38 [1.496]	46.5 [1.831]
101704	KLTF-TC50-JS1.5S-85-51	50.5 [1.988]	85 [3.346]	35.7 [1.406]	51 [2.008]	59.5 [2.343]

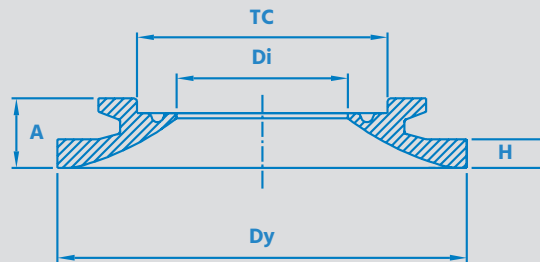
Kest-Lock Tank Flange



REF. NO	PRODUCT CODE	TC mm [in]	DY mm [in]	DI mm [in]	H mm [in]	A mm [in]
TC64 - For pipe JS2.0 (50.8x1.5)						
100289	KLTF-TC64-JS2.0S-100-6	64 [2.520]	100 [3.937]	47.8 [1.882]	6 [0.236]	14.5 [0.571]
100333	KLTF-TC64-JS2.0S-100-12	64 [2.520]	100 [3.937]	47.8 [1.882]	12 [0.472]	20.5 [0.807]
101417	KLTF-TC64-JS2.0S-100-25	64 [2.520]	100 [3.937]	47.8 [1.882]	25 [0.984]	33.5 [1.319]
101705	KLTF-TC64-JS2.0S-100-38	64 [2.520]	100 [3.937]	47.8 [1.882]	38 [1.496]	46.5 [1.831]
101706	KLTF-TC64-JS2.0S-100-51	64 [2.520]	100 [3.937]	47.8 [1.882]	51 [2.008]	59.5 [2.343]
TC77 - For pipe JS2.5 (63.5x2.0)						
101707	KLTF-TC77-JS2.5S-112-6	77.5 [3.051]	112 [4.409]	59.5 [2.343]	6 [0.236]	14.5 [0.571]
100332	KLTF-TC77-JS2.5S-112-12	77.5 [3.051]	112 [4.409]	59.5 [2.343]	12 [0.472]	20.5 [0.807]
101708	KLTF-TC77-JS2.5S-112-25	77.5 [3.051]	112 [4.409]	59.5 [2.343]	25 [0.984]	33.5 [1.319]
101709	KLTF-TC77-JS2.5S-112-38	77.5 [3.051]	112 [4.409]	59.5 [2.343]	38 [1.496]	46.5 [1.831]
101710	KLTF-TC77-JS2.5S-112-51	77.5 [3.051]	112 [4.409]	59.5 [2.343]	51 [2.008]	59.5 [2.343]
TC91 - For pipe JS3.0 (76.3x2.0)						
100634	KLTF-TC91-JS3.0S-131-6	91 [3.583]	131 [5.157]	72.3 [2.846]	6 [0.236]	14.5 [0.571]
101711	KLTF-TC91-JS3.0S-131-12	91 [3.583]	131 [5.157]	72.3 [2.846]	12 [0.472]	20.5 [0.807]
101712	KLTF-TC91-JS3.0S-131-25	91 [3.583]	131 [5.157]	72.3 [2.846]	25 [0.984]	33.5 [1.319]
101713	KLTF-TC91-JS3.0S-131-38	91 [3.583]	131 [5.157]	72.3 [2.846]	38 [1.496]	46.5 [1.831]
101714	KLTF-TC91-JS3.0S-131-51	91 [3.583]	131 [5.157]	72.3 [2.846]	51 [2.008]	59.5 [2.343]

Kest-Lock Tank Flange

JS
IDF



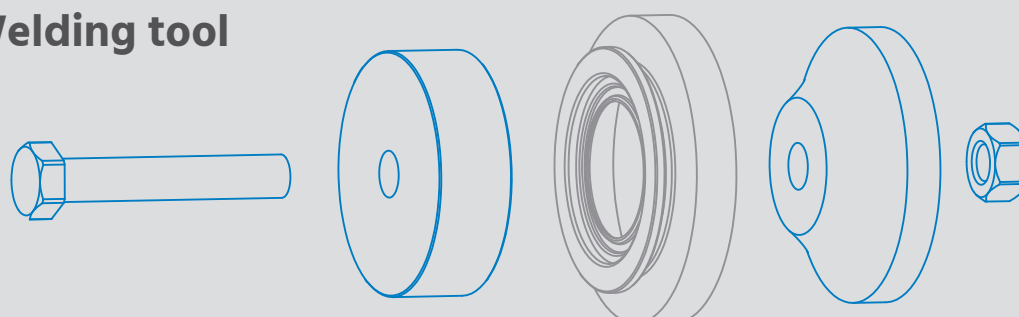
REF. NO	PRODUCT CODE	TC mm [in]	DY mm [in]	DI mm [in]	H mm [in]	A mm [in]
TC106 - For pipe JS3.5 (89.1x2.0)						
101715	KLTF-TC106-JS3.5S-146-6	106 [4.173]	146 [5.748]	85.1 [3.350]	6 [0.236]	14.5 [0.571]
101716	KLTF-TC106-JS3.5S-146-12	106 [4.173]	146 [5.748]	85.1 [3.350]	12 [0.472]	20.5 [0.807]
101717	KLTF-TC106-JS3.5S-146-25	106 [4.173]	146 [5.748]	85.1 [3.350]	25 [0.984]	33.5 [1.319]
101718	KLTF-TC106-JS3.5S-146-38	106 [4.173]	146 [5.748]	85.1 [3.350]	38 [1.496]	46.5 [1.831]
101719	KLTF-TC106-JS3.5S-146-51	106 [4.173]	146 [5.748]	85.1 [3.350]	51 [2.008]	59.5 [2.343]

Tank Flange Welding Tool

PRODUCT CODE	MATERIAL	TC	
		mm	[in]
Welding tool for KLTF			
KLWT-TC25-[Standard]-[H]	Aluminium	25	0.984
KLWT-TC34-[Standard]-[H]	Aluminium	34	1.339
KLWT-TC50-[Standard]-[H]	Aluminium	50.5	1.988
KLWT-TC64-[Standard]-[H]	Aluminium	64	2.520
KLWT-TC77-[Standard]-[H]	Aluminium	77.5	3.051
KLWT-TC91-[Standard]-[H]	Aluminium	91	3.583
KLWT-TC106-[Standard]-[H]	Aluminium	106	4.173
KLWT-TC119-[Standard]-[H]	Aluminium	119	4.685



Welding tool



EXAMPLE:

Welding tool for KLTF-TC64-^{Standard}ASTM2.0-100-^H25 = KLWT-TC64-^{Standard}ASTM2.0-^H25



ALWAYS USE A WELDING TOOL AND FOLLOW THE WELDING GUIDE LINE WHEN INSTALLING A KEST-LOCK TANK FLANGE