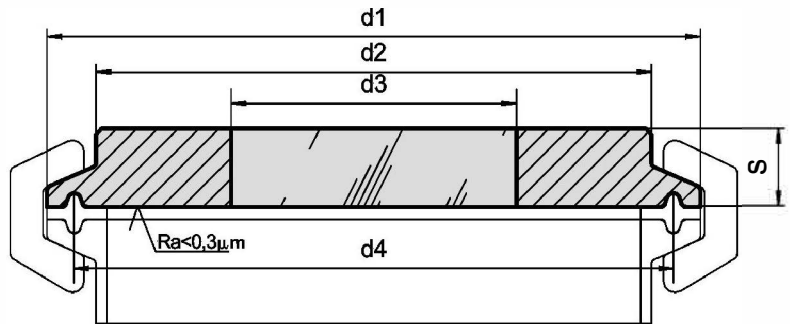


**METACLAMP® Sight Glass for Sanitary Clamp Fitting**



**Applications**

- For clamp fittings to  
DIN 32 676 / ISO 2852

**Material certificates**

- Certificate of Conformity to  
EN 10204-3.1 or 3.2

**Operating conditions**

- Pressure: -1 to 16 bar
- Temperature: see table

| Ring materials | Operating temperature |
|----------------|-----------------------|
| 1.4462         | -30°C to +280°C       |
| 2.4602         | -60°C to +300°C       |
| 2.4610         | -60°C to +300°C       |

**Approvals and technical data**

Manufactured and tested in conformance with:

- Pressure Equipment Directive 2014/68/EU,  
Module H (DIN/EN/ISO 9001)
- AD 2000 Standards W0/TRD 100
- A3 Standard for food processing
- Sight glass fused to metal conforming to DIN 7079
- Borosilicate glass to DIN 7080 / DIN 7079

**Advantages**

- Extremely compact construction
- Suitable for food processing & other sterile applications  
(A3-Standard)
- Reliability against total failure – the possibility of sudden  
unexpected rupture is totally excluded
- Fast & simple installation & maintenance
- Extreme resistance to impact and temperature
- Wide acceptance in the European & American food,  
beverage, pharmaceutical and chemical industries

| Nominal size |          |          | d1    | d2   | d3  | d4    | S  | Max operating pressure [bar] |
|--------------|----------|----------|-------|------|-----|-------|----|------------------------------|
| DIN          | ISO      | ASME BPE |       |      |     |       |    |                              |
| –            | 8/10     | ½", ¾"   | 25    | 18   | 10  | 18,0  | 10 | 16                           |
| 10/15/20     | –        | –        | 34    | 23   | 14  | 27,5  | 8  | 16                           |
| 25/32/40     | 15/20/25 | 1", 1½"  | 50,5  | 41   | 25  | 43,5  | 10 | 16                           |
| 50           | 32/40    | 2"       | 64    | 52   | 30  | 56,5  | 10 | 16                           |
| –            | 50       | 2½"      | 77,5  | 63,5 | 35  | 70,5  | 12 | 16                           |
| 65           | 65       | 3"       | 91    | 76   | 40  | 83,5  | 10 | 10                           |
| 80           | 80       | 3½"      | 106   | 90   | 50  | 97,0  | 10 | 10                           |
| 100          | –        | 4"       | 119   | 101  | 55  | 110,0 | 12 | 10                           |
| –            | 100      | 4½"      | 130   | 114  | 60  | 122,0 | 16 | 10                           |
| –            | –        | 5"       | 144,5 | 127  | 65  | 134,5 | 16 | 10                           |
| 125          | –        | 5½"      | 155   | 138  | 70  | 146,0 | 16 | 6                            |
| –            | –        | 6"       | 167   | 152  | 75  | 156,5 | 16 | 6                            |
| 150          | 150      | –        | 183   | 160  | 80  | 174,3 | 16 | 6                            |
| –            | –        | 8"       | 217,5 | 198  | 100 | 207,4 | 18 | 6                            |
| 200          | 200      | –        | 233,5 | 210  | 100 | 225,1 | 18 | 6                            |
| –            | –        | 10"      | 268   | 245  | 130 | 257,8 | 20 | 6                            |
| 250          | –        | –        | 287,5 | 266  | 140 | 278,4 | 22 | 6                            |
| –            | –        | 12"      | 319,3 | 300  | 150 | 309,1 | 22 | 6                            |
| 300          | 300      | –        | 338,3 | 316  | 150 | 328,4 | 22 | 6                            |