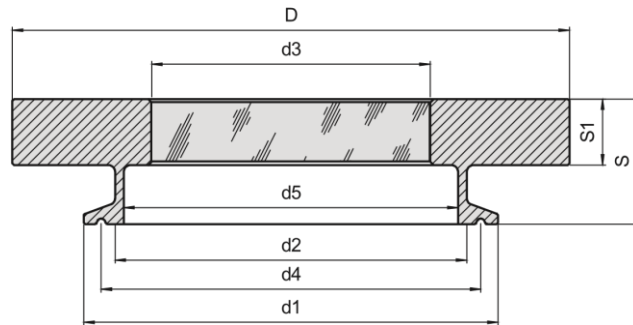
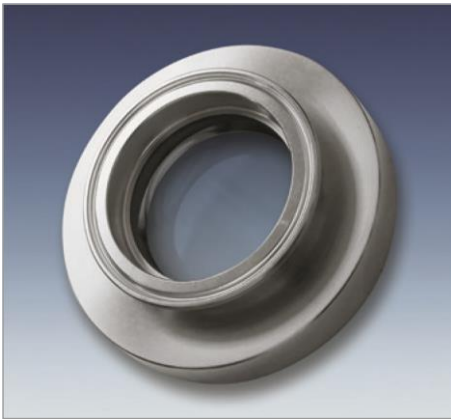


Type 89

METAGLAS® Sight Glass for Sanitary Clamp Fitting



Applications

- For clamp fittings to DIN32 676 / ISO 2852

Advantages

- Extremely compact construction
- Suitable for food processing & other sterile applications
- Reliability against total failure – the possibility of sudden unexpected rupture is totally excluded
- Fast & simple installation & maintenance
- Extreme resistance to impact and temperature
- Wide acceptance in the European & American food, beverage, pharmaceutical and chemical industries
- Large view

Approvals and technical data

Manufactured and tested in conformance with:

- Pressure Equipment Directive 2014/68/EU, Module H (DIN/EN/ISO 9001)
- AD 2000 Standards W0/TRD 100
- Sight glass fused to metal conforming to DIN 7079
- Borosilicate glass to DIN 7080 / DIN 7079

Material certificates

- Certificate of Conformity to EN 10204-3.1 or 3.2

Operating conditions

- Pressure: -1 to 16 bar
- Temperature: see table

Ring materials Operating temperature

| | |
|--------|-----------------|
| 1.4462 | -30°C to +280°C |
| 2.4610 | -60°C to +300°C |

| Nominal size | | d1 | d2 | d3 | d4 | d5 | S | S1 | D | max. operating pressure [bar] |
|--------------|---------|-------|-----|-----|-------|-------|----|----|-----|-------------------------------|
| DN | Inch | | | | | | | | | |
| 25/32/40 | 1", 1½" | 50,5 | 38 | 33 | 43,5 | 34,8 | 22 | 10 | 65 | 16 |
| 50 | 2" | 64 | 51 | 45 | 56,5 | 47,5 | 24 | 12 | 85 | 16 |
| 65 | 3" | 91 | 76 | 65 | 83,5 | 72 | 34 | 19 | 125 | 16 |
| 100 | 4" | 119 | 101 | 83 | 110,0 | 97,4 | 36 | 19 | 160 | 16 |
| – | 5" | 144,5 | 127 | 95 | 134,5 | 123 | 36 | 18 | 180 | 10 |
| – | 6" | 167 | 153 | 110 | 156,5 | 146,8 | 36 | 19 | 210 | 10 |
| – | 8" | 217,5 | 202 | 140 | 207,4 | 198 | 40 | 20 | 280 | 10 |