

VALUE PLASTICS BIOPROCESSING

# COMPONENTS



**Nordson**  
MEDICAL

# TABLE

of Contents

<b>Material Reference .....</b>	<b>3</b>
<b>Introduction .....</b>	<b>4</b>
RQ Series Quick Connects .....	5-6
Spaulding™ Aseptic Disconnects .....	7-8
PharmaLok™ Clamps.....	9-10
PharmaLok™ Tube Clamps.....	11
BioProcessing Check Valves.....	12
BioClamp® .....	13
BioValve® .....	14
Sanitary Fittings - Mini Flange.....	15
Sanitary Fittings - Maxi Flange.....	16-17
Sanitary Fittings - Caps .....	17
Sanitary Fittings - Reducers .....	18
Sanitary Fittings - Instrument Tees.....	19
CYLINDRAFlow™ Manifolds.....	20
Gaskets.....	21-22
Bag Ports .....	23-24
Opposing Barb Ports.....	25-26
Tube Fittings .....	27-50
Luer Fittings .....	51-52
Needlefree Swabable Valves .....	53-54
Check Valves .....	55-58
Stopcocks.....	59-60
Tubing.....	61-62
<b>Index .....</b>	<b>63-70</b>

# MATERIAL

## Reference

<b>-0</b> .....	Natural Nylon	<b>-6012</b> .....	Animal-Free Black Polypropylene
<b>-001</b> .....	Various, see part description	<b>-9002</b> .....	Radiation Stable Polycarbonate
<b>-06</b> .....	Orange Nylon	<b>-9010</b> .....	Radiation Stable Polycarbonate
<b>-07</b> .....	Yellow Nylon	<b>-9024</b> .....	Polycarbonate
<b>-1</b> .....	White Nylon	<b>-CM056</b> .....	RENOLIT SOLMED Granuflex 4301 Polyethylene
<b>-2</b> .....	Black Nylon	<b>-E</b> .....	PTEE/EPDM
<b>-3</b> .....	Red Nylon	<b>-J2A</b> .....	Natural Kynar® PVDF
<b>-4</b> .....	Green Nylon	<b>-PX</b> .....	Platinum-Cured Silicone
<b>-5</b> .....	Blue Nylon	<b>-U706</b> .....	Orange Class VI Glass-Filled Nylon
<b>-7</b> .....	Glass-Filled Natural Nylon	<b>-U71</b> .....	White Class VI Glass-Filled Nylon
<b>-9</b> .....	Clear Polycarbonate	<b>-U75</b> .....	Blue Class VI Glass-Filled Nylon
<b>-10</b> .....	Acetal	<b>-VP1</b> .....	Animal-Free Polyethylene
<b>-81</b> .....	Lace White ABS	<b>-XO</b> .....	Stainless Steel
<b>-6005</b> .....	Animal-Free Polypropylene		

## Founding Member BPSA - Bio-Process Systems Alliance

BPSA is a unique industry-led non-profit group whose aim is to encourage and advance the adoption and implementation of single-use manufacturing systems through education, sharing of best practices, development of consensus guidelines and business-to-business networking opportunities. Nordson MEDICAL is a participating member of BPSA and is also represented on the Executive Board.



## Bio-Process Systems Alliance

---

### *Advancing Single-Use Worldwide*

### **Nordson MEDICAL**

Nordson MEDICAL is your partner in the global life sciences market. We offer a wide range of capabilities, services, and customized OEM solutions.

Nordson MEDICAL is backed by the extensive resources of Nordson Corporation (Nasdaq: NDSN), the world leader in precision dispensing, fluid management and related technologies.

### **About the VP Product Line**

The Value Plastics product line includes thousands of fluid management components designed specifically for flexible tubing in different style and material combinations. Products include bioprocessing fittings, quick connect fittings, luer fittings, check valves, tube-to-tube fittings, and TC fittings with tubing IDs ranging from 1/16" to 1". We also offer custom component manufacturing, tubing, and select OEM components. The Value Plastics product line finds global application in demanding pharmaceutical and healthcare OEMs, research and specialty industrial applications.

### **Specialists in Pharmaceutical Development**

Nordson MEDICAL serves biotechnology manufacturers the world over. Whether they happen to manufacture therapeutics or vaccines, Nordson MEDICAL provides world-class single-use fluid transfer components to facilitate breakthrough advances in human and animal care pharmaceutical development.

### **Systems Integration**

Bioprocessing system integrators rely on quality fluid management components from Nordson MEDICAL. Nordson MEDICAL is a one-stop-shop and delivers unmatched standards-specific components time and again that are guaranteed to interconnect within any bioprocessing system regardless of the supplier. Our extensive product family can grow with you from pre-clinical to full-scale commercial products.

### **High-Purity Resins**

Made from high-purity resin materials for use with aggressive chemicals found in most pharmaceutical manufacturing plants, our plastic connectors offer broad chemical compatibility. Resins that are free of animal derivatives and adhere to standards such as ISO 10993 and USP Class VI, for example, are particularly important in biopharmaceutical applications.

### **Validation Packages**

Nordson MEDICAL performs resin and product tests, reducing the amount of testing required by our customers and aiding them in determining what level of tests they do need to perform. You can request extractables test data from our website, [www.nordsonmedical.com](http://www.nordsonmedical.com).

### **Your Trusted Source**

Nordson MEDICAL is your trusted source for bioprocessing products, offering regulatory information, part drawings, extractables data, biocompatibility data, and validation test data.

We provide a comprehensive design center to help instrumentation and equipment manufacturers achieve the highest level of performance from their applications. Offering off-the-shelf or custom-made products, optimal designs are executed producing reliable and cost-effective results that comply with the industry's strict regulations. Nordson MEDICAL also offers a full quality assurance staff who are available to assist when regulatory and technical questions arise.

Contact us to learn more about our bioprocessing capabilities.

TEL: +1 (970) 267-5200

TOLL FREE in USA: (888) 404-5837

[www.nordsonmedical.com](http://www.nordsonmedical.com)

# SPAULDING™

## Aseptic Disconnects

Providing a leak-free connection, the Spaulding™ Series Aseptic Disconnects eliminate the need for pinch clamps and tube welders. Smooth disconnects are achievable with the easy-to-use design, and valuable fluids are protected by valves that automatically shut off flow when the fittings are disconnected. Available in USP Class VI, ADCF Polysulfone, validation and test results confirm their suitability in pre-sterilized systems and are also gamma radiation stable. These connectors are interchangeable with similar plastic connectors.



### **SDAVF655NPS (-001)**

Female Valved Aseptic Connector, 600 Series Barb,  
1/4" (6.4 mm) Tubing ID



### **SDAM655NPS (-001)**

Male Open Flow Aseptic Connector, 600 Series Barb,  
1/4" (6.4 mm) Tubing ID



### **SDAVM655NPS (-001)**

Male Valved Aseptic Connector, 600 Series Barb,  
1/4" (6.4 mm) Tubing ID



### **SDAVF670NPS (-001)**

Female Valved Aseptic Connector, 600 Series Barb,  
3/8" (9.5 mm) Tubing ID



### **SDAM670NPS (-001)**

Male Open Flow Aseptic Connector, 600 Series Barb,  
3/8" (9.5 mm) Tubing ID



### **SDAVM670NPS (-001)**

Male Valved Aseptic Connector, 600 Series Barb,  
3/8" (9.5 mm) Tubing ID

## Features & Benefits:

- Valves that automatically shut off flow at disconnection
- Interchangeable with other plastic & metal connectors
- Plugs and caps available to maintain fluid path integrity
- Made with BSE/TSE-free materials
- Validation and test results confirm their suitability in pre-sterilized systems
- Materials satisfy USP Class VI criteria
- Fittings meet industry requirements
- Aseptic disconnect operation

## Specifications:

### Materials:

- Body - USP Class VI, ADCF tinted polysulfone
- O-Rings - Platinum-cured, silicone
- Springs - 316 stainless steel

### Sterilization:

- Gamma radiation stable up to 50kGy, autoclavable to 270°F (132°C) for a maximum of 60 minutes

### Fits Tubing IDs:

- 1/4" (6.4 mm), 3/8" (9.5 mm), 1/2" (12.7 mm)

### Operating Temperature:

- -40°F (-40°C) to 280°F (138°C)

### Leak Resistance:

- 125 psi, 8.62 bar



### SDAVF680NPS (-001)

Female Valved Aseptic Connector, 600 Series Barb, 1/2" (12.7 mm) Tubing ID



### SDAFCNPS (-001)

Female Cap Aseptic Connector



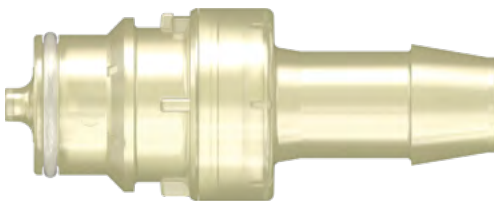
### SDAM680NPS (-001)

Male Open Flow Aseptic Connector, 600 Series Barb, 1/2" (12.7 mm) Tubing ID



### SDAMPNPS (-001)

Male Plug Aseptic Connector



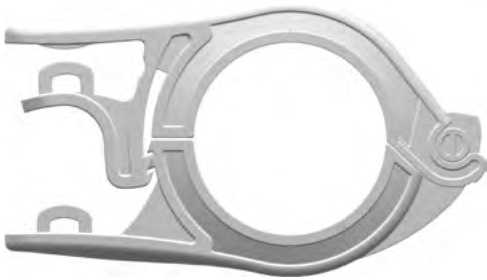
### SDAVM680NPS (-001)

Male Valved Aseptic Connector, 600 Series Barb, 1/2" (12.7 mm) Tubing ID

# PHARMA<sup>TM</sup>Lok

## Clamps

Offering full flexibility in single-use applications, Nordson MEDICAL has developed ground-breaking clamp designs that simplify the assembly process by making it effortless to securely attach sanitary fittings to bag ports and filters. PharmaLok™ clamps are lightweight, easy to install, and feature a quick release. The clamps are specifically designed to meet the needs of busy pharmaceutical and bioprocessing laboratories and work with Nordson MEDICAL's SF Series sanitary fitting Mini and Maxi flanges, as well as related caps and gaskets. Nordson MEDICAL's PharmaLok™ clamps are ASME BPE compliant and operate at a maximum pressure of 80 psi.



**CPAX150 (-U71 -CM077)**  
PharmaLok™ Easy-Open Clamp Series, Hygienic Union TC Version  
1" (25.4 mm) to 1.5" (38.1 mm)



**CPAN75 (-U71 -CM077)**  
PharmaLok™ Easy-Open Clamp Series, Hygienic Union TC Version  
.5" (12.7 mm) to .75" (19.0 mm)



**CPAX150 (-U75)**  
PharmaLok™ Easy-Open Clamp Series, Hygienic Union TC Version  
1" (25.4 mm) to 1.5" (38.1 mm), Glass Reinforced Blue Nylon



**CPAN75 (-U75)**  
PharmaLok™ Easy-Open Clamp Series, Hygienic Union TC Version  
.5" (12.7 mm) to .75" (19.0 mm), Glass Reinforced Blue Nylon



**CPAX150 (-U706)**  
PharmaLok™ Easy-Open Clamp Series, Hygienic Union TC Version  
1" (25.4 mm) to 1.5" (38.1 mm), Glass Reinforced Orange Nylon



**CPAN75 (-U706)**  
PharmaLok™ Easy-Open Clamp Series, Hygienic Union TC Version  
.5" (12.7 mm) to .75" (19.0 mm), Glass Reinforced Orange Nylon

## Single-Use Clamps & Easy-Open Clamps Features & Benefits:

- ASME BPE 18 DT-7-1 compliant & DIN compliant
- Easy to use, one-handed closure - no tools needed
- Repeatable use with constantly equal pressure on the gasket
- Tamper evident & zip tie compatible
- 360° compression
- Connects both plastic & stainless steel fittings
- SIP/CIP compatible

## Single-Use Clamps & Easy-Open Clamps Specifications:

### Materials:

- USP Class VI & ISO 10993 certified glass-filled nylon

### Temperature & Sterilization Specifications:

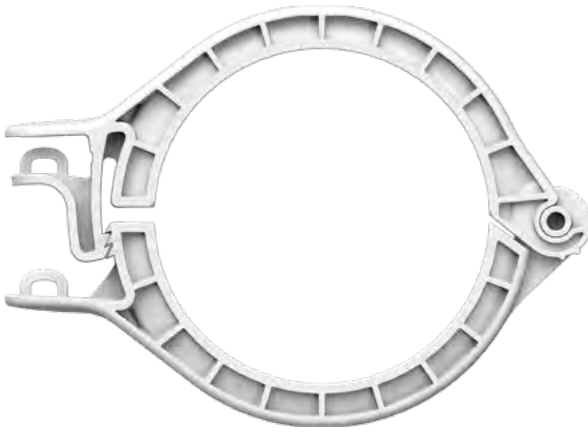
- Normal operating temperature -94°F (-70°C) to 140°F (60°C)
- Cryogenic freezing to -112°F (-80°C)
- Autoclavable up to 273°F (134°C) for a maximum of 30 min.
- Gamma radiation up to 50 kGy
- X-ray sterilization up to 50 kGy

### Maximum Pressure:

- 80 psi (conforms to ASME BPE-2014 PM-4.2.2)

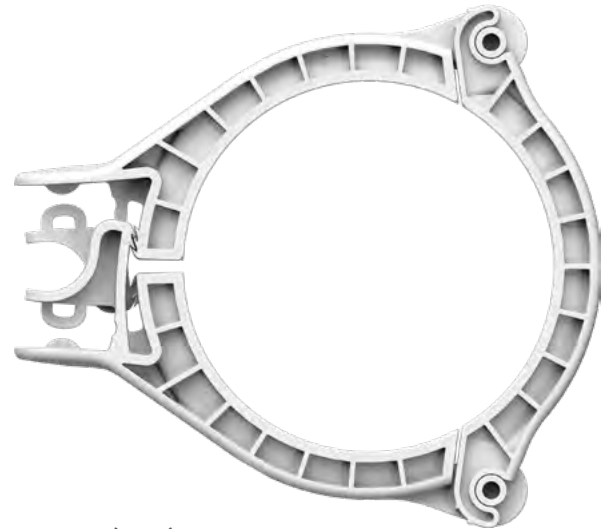
### Sizes:

- Fitting .5" (12.7 mm) to .75" (19.0 mm), 1" (25.4 mm) to 1.5" (38.1 mm), 3" (76.2 mm), and 4" (101.6 mm)



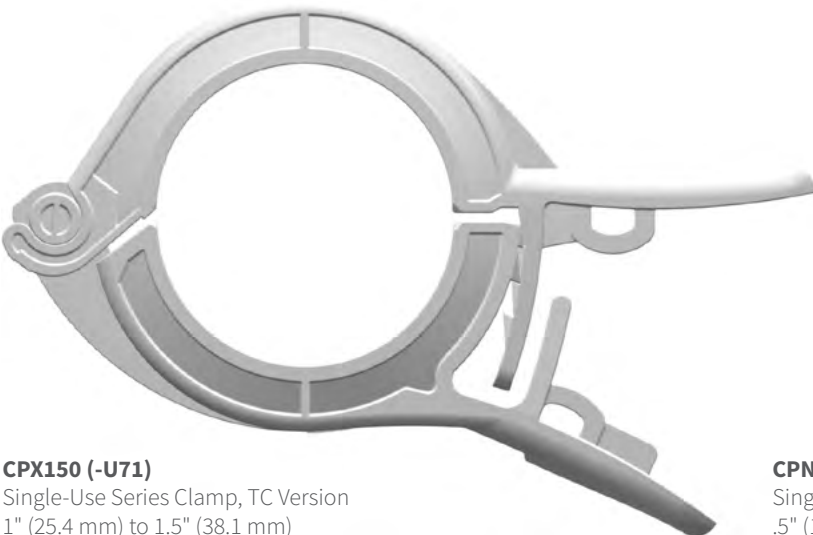
### CPAX300 (-U71)

PharmaLok™ Easy-Open Clamp Series, Hygienic Union TC Version 3" (76.2 mm), Glass Reinforced White Nylon



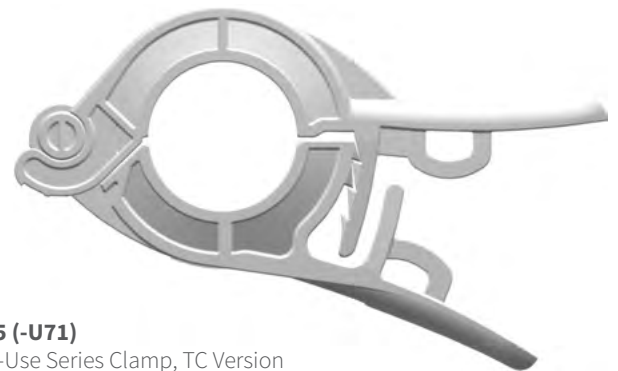
### CPAX400 (-U71)

PharmaLok™ Easy-Open Clamp Series, Hygienic Union TC Version 4" (101.6 mm), Glass Reinforced White Nylon



### CPX150 (-U71)

Single-Use Series Clamp, TC Version 1" (25.4 mm) to 1.5" (38.1 mm)



### CPN75 (-U71)

Single-Use Series Clamp, TC Version .5" (12.7 mm) to .75" (19.0 mm)



# PHARMA<sup>TM</sup>Lok

## Tube Clamps

Pharmalok™ tube clamps effortlessly and securely close off flow. Thin-walled tube clamps fit wall thicknesses 1/32" (0.79 mm) to 3/32" (2.38 mm) with a maximum OD of 1/2" (12.7 mm). Standard tube clamps fit wall thicknesses 1/8" (3.2 mm) to 1/4" (6.4 mm) with a maximum OD of 1" (25.4 mm). Large tube clamps fit wall thicknesses 1/8" (3.2 mm) to 1/4" (6.4 mm) with a maximum OD of 2.5" (63.5 mm).

### Tube Clamps Specifications:

#### Materials:

- USP Class VI & ISO 10993 certified glass-filled nylon

#### Temperature & Sterilization Specifications:

- Normal operating temperature -94°F (-70°C) to 140°F (60°C)
- Cryogenic freezing to -112°F (-80°C)
- Autoclavable up to 273°F (134°C) for a maximum of 30 min.
- Gamma radiation up to 50 kGy
- X-ray sterilization up to 50 kGy

#### Maximum Pressure:

- Up to 150 psi

#### Sizes:

- Thin-walled, standard tube clamp, and large sizes



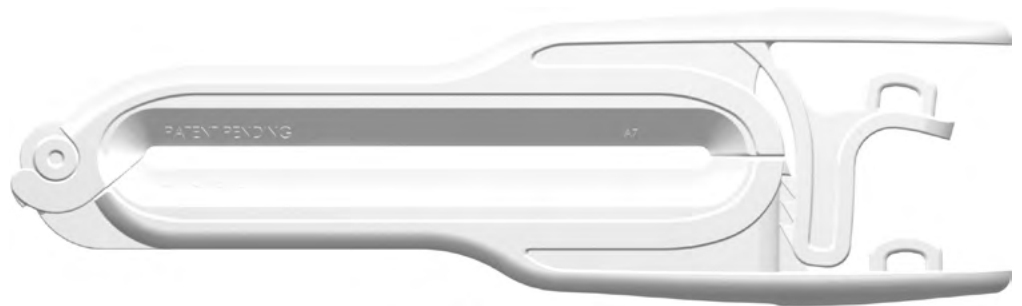
#### CPT90 (-U71 -U706 -CM077 -CM078)

Pharmalok™ Small and Thin-Walled Tube Clamp, Wall Thickness 1/32" (0.79 mm) to 3/32" (2.4 mm), Max OD 1/2" (12.7 mm), Glass-Filled White Nylon or Glass-Reinforced Orange Nylon



#### CPT100 (-U71 -U706 -CM077 -CM078)

Pharmalok™ Tube Clamp, Wall Thickness 1/8" (3.2 mm) to 1/4" (6.4 mm), Max OD 1" (25.4 mm), Glass-Filled White Nylon or Glass-Reinforced Orange Nylon



#### CPT110 (-U71 -U706 -CM078)

Pharmalok™ Large Tube Clamp, Wall Thickness 1/8" (3.2 mm) to 1/4" (6.4 mm), Max OD 2.5" (63.5 mm), Glass-Filled White Nylon or Glass-Reinforced Orange Nylon

### Tube Clamps Features & Benefits:

- Designed for use with silicone & TPE tubing
- Easy to use, one-handed closure - no tools needed
- Tamper evident & zip tie compatible

# BIOProcessing

## Check Valves

Nordson MEDICAL now offers a reliable check valve. Our patented check valve design features a barb for a secure connection, and our normally closed pathway means you only get flow when you want it. Our biopharm-compatible materials meet USP Class VI and ISO 10993 criteria, making them the valves of choice for your applications. Now you can do even more in pharmaceutical development. Nordson MEDICAL's bioprocessing check valves control flow, restrict siphoning and backflow, and prevent contamination.

### Features & Benefits:

- Designed to prevent backflow
- Biopharma-grade materials meet USP Class VI & ISO 10993 criteria
- No animal derivatives
- Barbs that work with tube clamps
- Normally closed valve for optimum flow control
- Clean room manufacturing
- Flow orientation by design



#### **SCV655U50C050 (-001)**

Normally Closed Check Valve Assembly, 600 Series Barb, 1/4" (6.4mm) ID Tubing, 0.5 psi Crack Pressure

### Need it Fast?

You can order any of our thousands of parts online now with no order \$ minimums, 24 hours a day, 7 days a week!  
[www.nordsonmedical.com](http://www.nordsonmedical.com)

# BIOClamp®

BioClamp® plastic quick-release clamps are specifically designed to meet the needs of busy pharmaceutical and bioprocessing laboratories, offering full flexibility in single-use applications. The clamps are lightweight, easy for technicians to install, and provide for convenient assembly release. BioClamps® reduce the distortion on polymeric components when subjected to heat, and the glass reinforced nylon is USP Class VI certified.

## Features & Benefits:

- Can be SIP repeatedly
- Can be autoclaved repeatedly at 134°C for 5 minutes
- Reduced distortion on polymeric components
- More compatible with current manufacturing than steel
- Greater flexibility in operation
- Single-use disposal

## Specifications:

### Materials:

- Glass reinforced nylon 66
- USP Class VI certified

### Maximum Operating Pressure:

- 150 psig for 1/2" to 4" clamps
- 90 psig for 6" and 8" clamps

### Maximum Cumulative Gamma Dose:

- 40 kiloGrays



Reference Part Shown:  
**VNG150WHT**

### VNG075WHT

Clamp, Mini Flange, Glass Reinforced White Nylon, 1/2" (12.7 mm) to 3/4" (19.0 mm) Tubing ID

### VNG400WHT

Clamp, Maxi Flange, Glass Reinforced White Nylon, 4" (101.6 mm) Tubing ID

### VNG150WHT

Clamp, Maxi Flange, Glass Reinforced White Nylon, 1" (25.4 mm) to 1.5" (38.1 mm) Tubing ID

### VNG600WH

Clamp, Maxi Flange, Glass Reinforced White Nylon, 6" (152.4 mm) Tubing ID

### VNG200WHT

Clamp, Maxi Flange, Glass Reinforced White Nylon, 2" (50.8 mm) Tubing ID

### VNG800WH

Clamp, Maxi Flange, Glass Reinforced White Nylon, 8" (203.2 mm) Tubing ID

### VNG300WHT

Clamp, Maxi Flange, Glass Reinforced White Nylon, 3" (76.2 mm) Tubing ID

# BIOValve®

The BioValve® pinch valve is a precision restriction flow controller and shut-off valve for silicone tubing used in bioprocessing and pharmaceutical manufacturing applications. The threaded pitch can be calibrated to 2 mm per turn to minimize flow path turbulence. Available in 1/4" (6.4 mm) and 1" (12.7 mm), BioValve® is perfect for precise operation. The valves can be SIP repeatedly, and they can also be autoclaved at 134°C for 5 minutes.

## Specifications:

### Materials:

- Glass reinforced nylon 66
- USP Class VI certified

### Sizes:

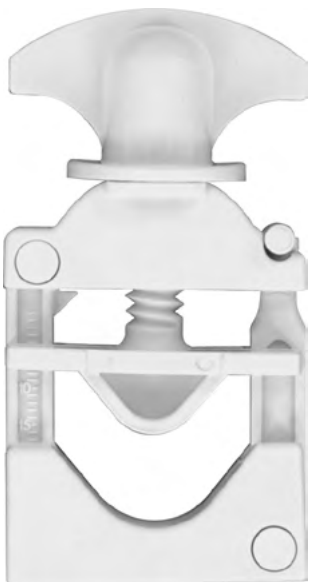
- 1/4" (6.4 mm) to 1" (12.7 mm) OD

### Maximum Operating Pressure:

- 150 psig.

### Maximum Cumulative Gamma Dose:

- 40 kiloGrays



### **VBV0500NW**

Pinch Valve, Mini, Glass Reinforced White Nylon, 1/4" (6.4 mm) to 1/2" (12.7 mm) Tubing OD



### **VBV1000NW**

Pinch Valve, Maxi, Glass Reinforced White Nylon, 1/2" (12.7 mm) to 1" (25.4 mm) Tubing OD

# SF Series

## Sanitary Fittings

The SF Series sanitary fittings are based on design concepts calling for a heavy-duty part with superior side load strength, while providing superior flow-through characteristics, making them the connectors of choice for single-use bioprocesses. Pharmaceutical professionals find these plastic fittings offer all the benefits of disposable parts while offering performance capabilities not found in earlier versions of flanged fittings.



**SFMN630 (-6005)**  
Sanitary Fitting, Mini Flange 3/4" to 600 Series Barb, 1/8" (3.2 mm) Tubing ID



**SFMN655 (-6005 -J2A)**  
Sanitary Fitting, Mini Flange 3/4" to 600 Series Barb, 1/4" (6.4 mm) Tubing ID



**SFMN670 (-6005 -J2A)**  
Sanitary Fitting, Mini Flange 3/4" to 600 Series Barb, 3/8" (9.5 mm) Tubing ID



**SFMN680 (-6005 -J2A)**  
Sanitary Fitting, Mini Flange 3/4" to 600 Series Barb, 1/2" (12.7 mm) Tubing ID



**SFMN6100 (-6005 -J2A)**  
Sanitary Fitting, Mini Flange 3/4" to 600 Series Barb, 3/4" (19.0 mm) Tubing ID

## Features & Benefits:

- Animal-free materials
  - No BSE documentation required
- Radiused flow surfaces
  - Smooth uninterrupted flow
- Mini & Maxi sizes
  - Easy to retrofit current operations & works with commercially available biopharm clamps
- No particulate build-up
  - Interior surface controlled to 15 Ra microinch
- Reducer sizes available

## Specifications:

### Materials:

- Animal-Free Polypropylene, Natural PVDF

### Tubing ID Sizes:

- 1/8", 1/4", 3/8", 1/2", 3/4", 1"
- Reducers 1" x 3/4", 1-1/2" x 3/4", 1-1/2" x 1", 2" x 3/4", 2" x 1-1/2"

### Leak Resistance:

- Tested at 80 psi air under water for 90 seconds

### Tubing Removal Force:

- 1/4" PP with C-Flex® shore A tubing: 21 lbs.
- 1/2" PP with C-Flex® shore A tubing: 89 lbs.
- 1" PP with C-Flex® shore A tubing: 121 lbs.



### SFMX655 (-6005 -J2A)

Sanitary Fitting, Maxi Flange 1-1/2" to 600 Series Barb, 1/4" (6.4 mm) Tubing ID



### SFMX670 (-6005 -J2A)

Sanitary Fitting, Maxi Flange 1-1/2" to 600 Series Barb, 3/8" (9.5 mm) Tubing ID



### SFMX680 (-6005 -J2A)

Sanitary Fitting, Maxi Flange 1-1/2" to 600 Series Barb, 1/2" (12.7 mm) Tubing ID



### SFMX6100 (-6005 -J2A)

Sanitary Fitting, Maxi Flange 1-1/2" to 600 Series Barb, 3/4" (19.0 mm) Tubing ID



### SFMX6110 (-6005 -J2A)

Sanitary Fitting, Maxi Flange 1-1/2" to 600 Series Barb, 1" (25.4 mm) Tubing ID

# SF Series

## Sanitary Fittings

The SF Series sanitary fittings are based on design concepts calling for a heavy-duty part with superior side load strength, while providing superior flow-through characteristics, making them the connectors of choice for single-use bioprocesses. Pharmaceutical professionals find these plastic fittings offer all the benefits of disposable parts while offering performance capabilities not found in earlier versions of flanged fittings.



### SFM2X6110 (-6005)

Sanitary Fitting, Maxi Flange 2.0" to 600 Series Barb, 1.0" (25.4 mm) Tubing ID



### SFMNC (-6005 -J2A)

Sanitary Fitting, Mini Cap 3/4"



### SFMXC (-6005 -J2A)

Sanitary Fitting, Maxi Cap 1-1/2"



### SFM3X6110 (-6005)

Sanitary Fitting, Maxi Flange 3.0" to 600 Series Barb, 1.0" (25.4 mm) Tubing ID



### SFM2XC (-6005)

Sanitary Fitting Maxi Cap 2.0"



### SFM3XC (-6005)

Sanitary Fitting Maxi Cap 3.0"

## Features & Benefits:

- Animal-free materials
  - No BSE documentation required
- Radiused flow surfaces
  - Smooth uninterrupted flow
- Mini & Maxi sizes
  - Easy to retrofit current operations & works with commercially available biopharm clamps
- No particulate build-up
  - Interior surface controlled to 15 Ra microinch
- Reducer sizes available

## Specifications:

### Materials:

- Animal-Free Polypropylene, Natural PVDF

### Tubing ID Sizes:

- 1/4", 3/8", 1/2", 3/4", 1"
- Reducers 1" x 3/4", 1-1/2" x 3/4", 1-1/2" x 1", 2" x 3/4", 2" x 1-1/2"

### Leak Resistance:

- Tested at 80 psi air under water for 90 seconds

### Tubing Removal Force:

- 1/4" PP with C-Flex® shore A tubing: 21 lbs.
- 1/2" PP with C-Flex® shore A tubing: 89 lbs.
- 1" PP with C-Flex® shore A tubing: 121 lbs.



### SFM100/SFM075 (-6005)

Sanitary Fitting, Concentric Reducer,  
1" (25.4 mm) Landish TC x .75"  
(19.0 mm) TC



### SFM150/SFM075 (-6005)

Sanitary Fitting, Concentric Reducer,  
1.5" (38.1 mm) Landish TC x .75"  
(19.0 mm) TC



### SFM150/SFM100 (-6005)

Sanitary Fitting, Concentric Reducer,  
1.5" (38.1 mm) Landish TC x 1"  
(25.4 mm) TC



### SFM200/SFM075 (-6005)

Sanitary Fitting, Concentric  
Reducer, 2" (50.8 mm) Landish  
TC x .75" (19.0 mm) TC



### SFM200/SFM150 (-6005)

Sanitary Fitting, Concentric  
Reducer, 2" (50.8 mm) Landish  
TC x 1.5" (38.1 mm) TC



# SF Series

## Instrument Tees

SF Series Instrument Tees work well with existing pharmaceutical instrumentation and are available in 1/2" and 1" tubing IDs. Critical to a successful single-use implementation, the fittings work for instrument gauges, fluid transfer, and filtration applications. The configuration is a standard 1.5" TC style interface on the instrument side and tee style for the fluid path. The fittings also utilize Nordson MEDICAL's popular 600 series barb, which is ideally suited for silicone and TPE tubing. Constructed of Nordson MEDICAL's standard polyethylene resin, the instrument tees utilize materials found in many single-use bags being used around the world.

### Features & Benefits:

- Works with existing pharmaceutical instrumentation
- Single-use technology
- ASME BPE compliant interface on the instrument side
- Tee style for the fluid path
- 600 series barb
- Common industry materials

### Specifications:

#### Materials:

- Animal-Free Polyethylene

#### Tubing Sizes:

- 1/2" and 1" tubing IDs

#### Configuration:

- 1.5" TC style



#### **SFMXT680 (-VP1)**

Sanitary Fitting Instrument Tee, Maxi Flange to 600 Series Barb, 1/2" (12.7 mm) Tubing ID, Animal-free Natural Polyethylene



#### **SFMXT6110 (-VP1)**

Sanitary Fitting Instrument Tee, Maxi Flange to 600 Series Barb, 1" (25.4 mm) Tubing ID, Animal-free Natural Polyethylene

# CYLINDRAFlow™

## Manifolds

Nordson MEDICAL is proud to introduce the first all-in-one manifold for pharmaceutical and single-use biopharmaceutical fluid transfer applications. The revolutionary design of this patent-pending, compact fitting not only saves space, but also simplifies use and assembly. With five ports available in one component, gone are the many leak points found in traditional stopcock and Y connector manifolds. Ideal for downstream processing, multiple bags can easily be filled from one large bag. Flow is consistent as it travels around the inner body of the part, maintaining a steady pressure. The large flow selector is effortless to turn, and the lock-in-place feature gives you assurance that you are utilizing the desired port.

### Features & Benefits:

- Can accommodate up to 5 fluid lines
- Flow restricted to one port at a time
- No pressure drop as fluid moves around & through the ports
- Intuitive push-to-turn flow selector
- Easier to use and fewer leak points than stopcock and Y connector manifolds
- Materials meet USP Class VI & ISO 10993 criteria
- Gamma radiation stable
- Can be daisy chained for additional ports
- Arrows to provide a clear indication of how to turn the flow selector and which port is in use
- Etched data code for easy access to product resources and material information

### Specifications:

#### Materials:

- Body & flow selector - gamma stable polycarbonate
- Internal spring - 316 stainless steel
- Gasket - platinum-cured silicone

#### Operating Pressure:

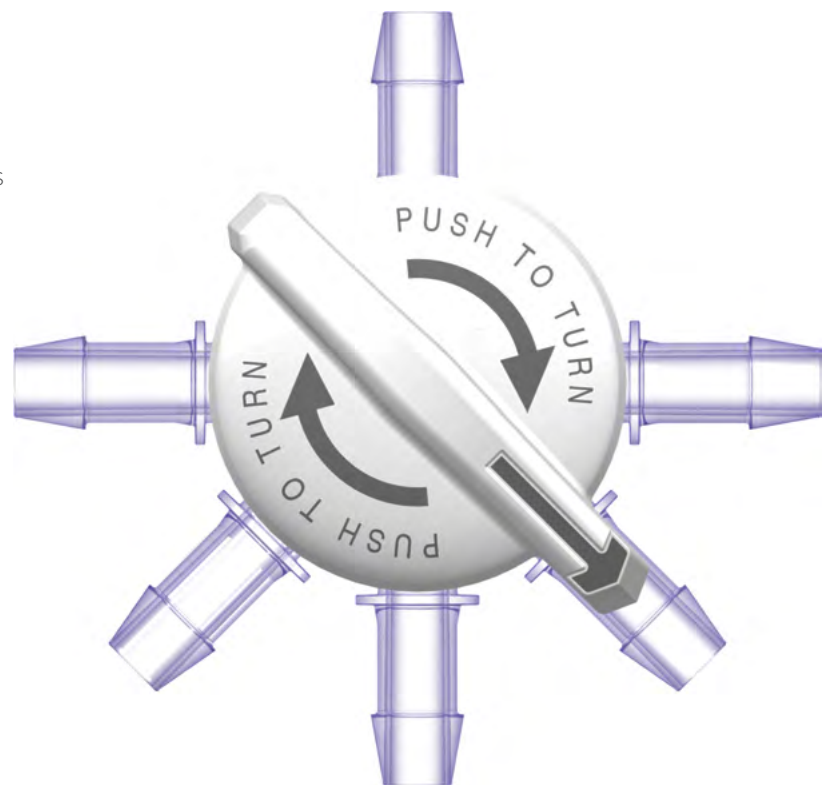
- 15 psi (1.0 bar) liquid rated

#### Fits Tubing IDs:

- 3/8" (9.5 mm)

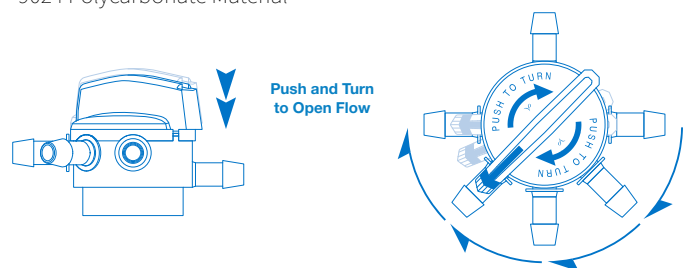
#### Barb Size:

- 600 series



#### FMD5P670-001

CYLINDRAFlow™ Manifold Director, 600 Series Barbs, 3/8" (9.5 mm) Flow, 1 Input, 5 Outputs, 15 psi Liquid Rated, -9024 Polycarbonate Material



# GASKETS

Nordson MEDICAL's gasket material options include Class VI compliant PTFE/EPDM and platinum-cured silicone in sizes that fit the 3/4" Mini Flange, 1-1/2" Maxi Flange, 2" Flange, and 3" Flange. Keeping customer requirements in mind, these components were manufactured for applications requiring the highest sanitary standards and chemical purity.

Tuf-flex® sanitary gaskets are unitized and will maintain ID without re-torquing or leaking.



**GMN450 (-PX)**

Molded Gasket for Mini Flange SFMN Series Fittings



**GMX150 (-PX)**

Molded Gasket for Maxi Flange SFMX Series Fittings



**GMX455 (-PX)**

Molded Gasket for Maxi Flange SFMX Series Fittings



**GMN75 (-PX)**

Molded Gasket for Mini Flange SFMN Series Fittings



**G424TRX-0300**

Molded Gasket for 3" Flange Fittings, Platinum-Cured Silicone

## Features & Benefits:

- Class VI compliant materials
- 100% virgin raw materials & colorants
- Excellent wear performance
- Maintains seal integrity
- Complete material traceability

## Specifications:

### Materials:

- PTFE/EPDM
- Platinum-cured silicone

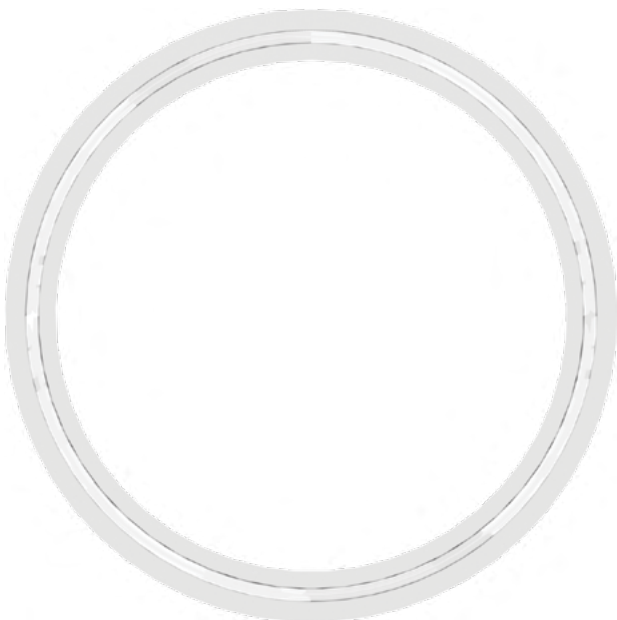
### Gasket Sizes:

- 3/4" (19.0 mm) to 3" (76.2 mm)



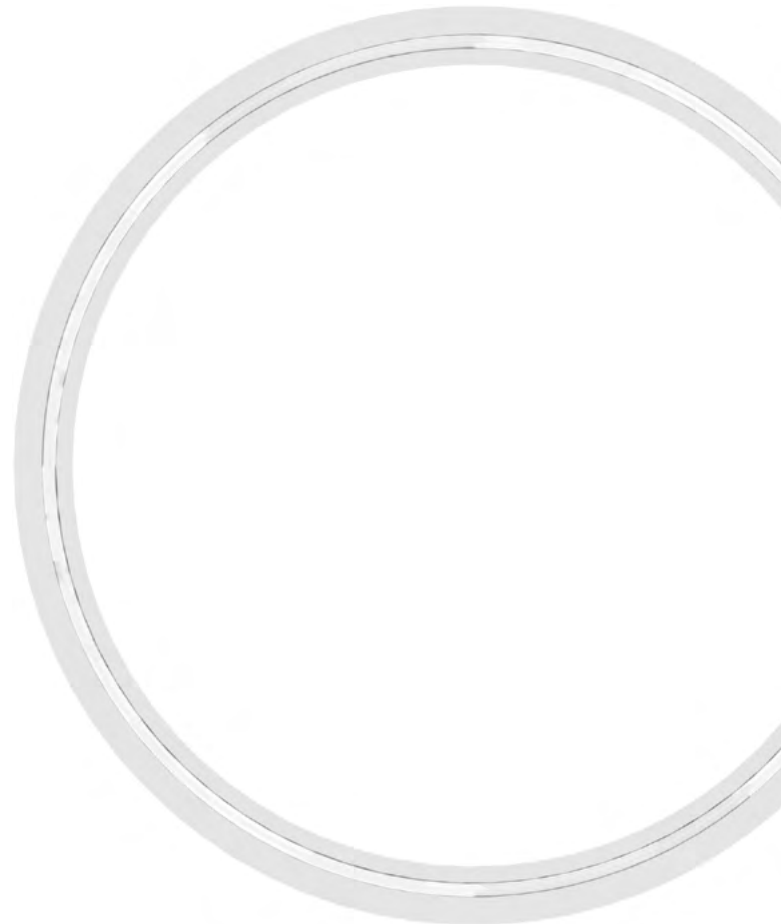
### **G40MPGR-TF150 (-E)**

Molded Tuf-Flex® Gasket for Maxi Flange SFMX Series Fittings



### **G40RX-PX-0400**

Molded Gasket for 4" Flange Fittings, Platinum-Cured Silicone



### **GM4749TRX-0600**

Molded Gasket for 6" Flange Fittings, Platinum-Cured Silicone

# BAG

## Ports

Nordson MEDICAL's high tech series of bag ports offers a variety of benefits to the biopharmaceutical industry. Value Pharma™ resin features animal derivative free qualification, USP Class VI certification, and the guarantee of heat sealing and conformance with polyethylene bags, and also provides a strong, 24-hour resistance to alcohol stress cracking. RENOLIT SOLMED Granuflex 4301 resin demonstrates lower leachable levels and high purity. The most notable of the bag ports' specifications are the parabolic lead and the alignment ribs. These two features, respectively, reduce the amount of time it takes to drain a bag by up to 24 percent and improve flow dynamics through the port.



### SFBP630 (-VP1)

Bag Port with 600 Series Barb, Value Pharma™ Resin, 1/8" (3.2 mm) Tubing ID



### SFBP655 (-VP1)

Bag Port with 600 Series Barb, Value Pharma™ Resin, 1/4" (6.4 mm) Tubing ID



### SFBP670 (-VP1)

Bag Port with 600 Series Barb, Value Pharma™ Resin, 3/8" (9.5 mm) Tubing ID



### SFBP680 (-VP1)

Bag Port with 600 Series Barb, Value Pharma™ Resin, 1/2" (12.7 mm) Tubing ID



### SFBP6100 (-VP1)

Bag Port with 600 Series Barb, Value Pharma™ Resin, 3/4" (19.0 mm) Tubing ID



### SFBP6110 (-VP1)

Bag Port with 600 Series Barb, Value Pharma™ Resin, 1" (25.4 mm) Tubing ID

## Features & Benefits:

- Compliant to ASME BPE ferrule specifications
  - Works with leading industry single-use bags
- Parabolic lead
  - Reduces the time it takes to drain a bag by 17% to 24%
  - Similar results for both fluid and powder applications
- Alignment ribs
  - Improves fluid dynamics of flow through the port
- USP Class VI certification
- Resins ensure heat sealing with polyethylene bags

## Specifications:

### Materials:

- Value Pharma™ resin
  - Animal derivative free
  - Resistant to alcohol stress cracking
- RENOLIT SOLMED Granuflex 4301 resin
  - Animal derivative free
  - Demonstrates lower leachable levels & high purity

### Barb Sizes:

- 1/8" (3.2 mm) to 1" (25.4 mm)

### Sanitary TC Port Sizes:

- 1-1/2" (38.1 mm), 3" (76.2 mm), and 4" (101.6 mm)

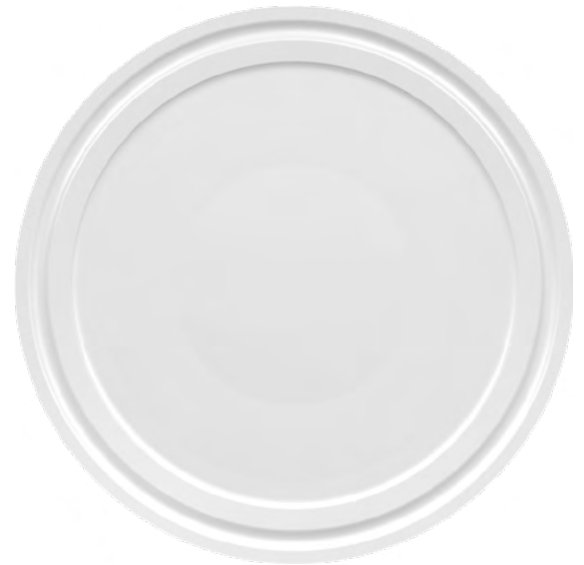
### Flow Rate:

- 8.37 gallons per minute



### SFBPF1 (-VP1)

Bag Port with Ferrule Fitting  
to 1-1/2" TC Connection



### SFM3C-6005

Flat TC Style End Cap, Animal  
Free Polypropylene, 3", Works  
with SFBPF3.



### SFBPF3 (-VP1 -CM056)

Bag Port with Ferrule Fitting  
to 3" TC Connection

### SFBPF4 (-VP1)

Bag Port with Ferrule Fitting  
to 4" TC Connection

### SFM4C-6005

Flat End Cap, Animal  
Free Polypropylene, 4"  
(101.6 mm) Flange

# OPPOSING

## Barb Ports

Nordson MEDICAL offers the biomedical market opposing barb ports. The larger ports can be used in filling applications, and they are also ideally suited to work with sensors. Value Pharma™ resin features animal derivative free qualification, USP Class VI certification, and the guarantee of heat sealing and conformance with polyethylene bags. The resin also provides a strong, 24-hour resistance to alcohol stress cracking.



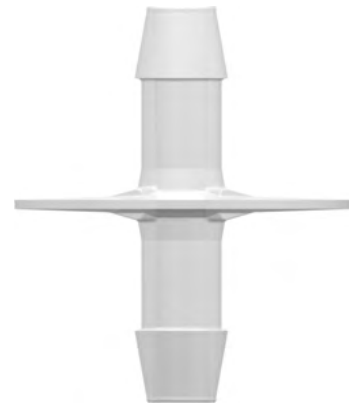
### **SFBP635/635 (-VP1)**

Dip Tube (Opposable Barbs) with Two 600 Series Barbs, Value Pharma™ Resin, 3/16" (4.8 mm) Tubing ID



### **SFBP655/655 (-VP1)**

Dip Tube (Opposable Barbs) with Two 600 Series Barbs, Value Pharma™ Resin, 1/4" (6.4 mm) Tubing ID



### **SFBP670/670 (-VP1)**

Dip Tube (Opposable Barbs) with Two 600 Series Barbs, Value Pharma™ Resin, 3/8" (9.5 mm) Tubing ID

## Features & Benefits:

- Easy to heat seal into film material
- Can be used in filling applications
- Works great with silicone & TPE style tubing
- Better tube retention
- 600 Series barb sizes
- Animal-free polyethylene
- Materials meet USP Class VI criteria

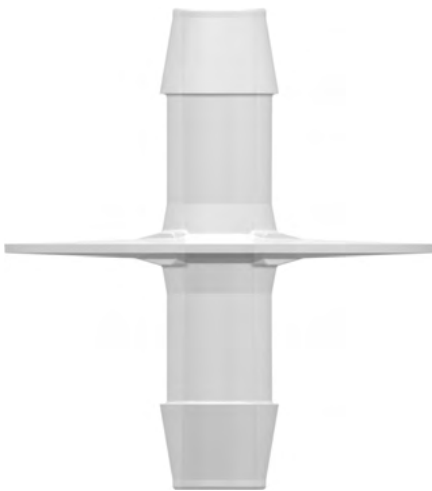
## Specifications:

### Materials:

- Value Pharma™ resin
  - Animal derivative free
  - Resistant to alcohol stress cracking

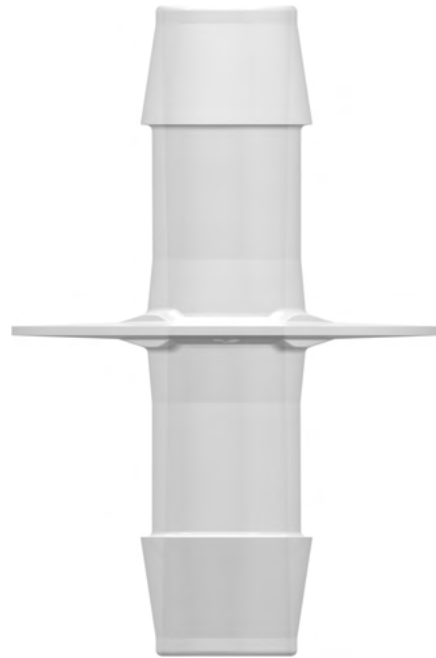
### Tubing Sizes:

- 3/16" (4.8 mm) to 3/4" (19.0 mm)



### SFBP680/680 (-VP1)

Dip Tube (Opposable Barbs) with Two 600 Series Barbs, Value Pharma™ Resin, 1/2" (12.7 mm) Tubing ID



### SFBP6100/6100 (-VP1)

Dip Tube (Opposable Barbs) with Two 600 Series Barbs, Value Pharma™ Resin, 3/4" (19.0 mm) Tubing ID



# TUBE

## Fittings

Nordson MEDICAL offers barbed tubing fittings and tubing connectors in sizes ranging from 1/16" (1.6 mm) to 1" (25.4 mm) tubing ID in over 100 separate configurations in nylon, polypropylene, polycarbonate and PVDF, with other engineering resins available on special order. Available barbed fitting styles include straight tube connectors, elbow fittings, tee fittings, crosses, Y (wye) connectors, multi-port connectors, and multiple reducer combinations.

Several barb styles are offered to provide designers the widest range of assembly forces, pulloff resistance and blowoff resistance – without the need for clamps.

## Straight Through Fittings



**Reference Part Shown: N035**

### **AA (-1 -6005)**

Straight Through Connector with Classic Series Barb, 1/16" (1.6 mm) Tubing ID

### **DD (-1 -2 -6005 -9)**

Straight Through Connector with Classic Series Barb, 3/32" (2.4 mm) Tubing ID

### **CC (-1 -6005)**

Straight Through Connector with Classic Series Barb, 1/8" (3.2 mm) Tubing ID

### **N210 (-1 -2 -6005 -9)**

Straight Through Connector with 200 Series Barb, 1/16" (1.6 mm) Tubing ID

### **N220 (-1 -6005 -9)**

Straight Through Connector with 200 Series Barb, 3/32" (2.4 mm) Tubing ID

### **N230 (-1 -2 -3 -5 -6005 -9 -J2A)**

Straight Through Connector with 200 Series Barb, 1/8" (3.2 mm) Tubing ID

### **N410 (-1 -6005)**

Straight Through Connector with 400 Series Barb, 1/16" (1.6 mm) Tubing ID

### **N420 (-1 -6005 -J2A)**

Straight Through Connector with 400 Series Barb, 3/32" (2.4 mm) Tubing ID

### **N430 (-1 -6005)**

Straight Through Connector with 400 Series Barb, 1/8" (3.2 mm) Tubing ID

### **N004 (-6005 -9 -J2A)**

Straight Through Connector with 500 Series Barb, 1/16" (1.6 mm) Tubing ID

### **N007 (-1 -2)**

Straight Through Connector with 500 Series Barb, 3/32" (2.4 mm) Tubing ID

### **N013 (-1 -6005 -9 -J2A -9002)**

Straight Through Connector with 500 Series Barb, 1/8" (3.2 mm) Tubing ID

Due to size, we are not able to display all large tube fittings. Please see [www.nordsonmedical.com](http://www.nordsonmedical.com) for part reference. Minimum package quantities vary by tube IDs. Please verify minimum package sizes when placing orders.

## Straight Through Fittings



### Reference Part Shown: N035

#### **4040 (-1 -2 -6005 -J2A)**

Straight Through Connector with Classic Series Barb, 5/32" (4.0 mm) Tubing ID

#### **N440 (-6005 -J2A)**

Straight Through Connector with 400 Series Barb, 5/32" (4.0 mm) Tubing ID

#### **N025 (-1 -6005)**

Straight Through Connector with 500 Series Barb, 5/32" (4.0 mm) Tubing ID

#### **5050 (-1 -2 -6005 -9002)**

Straight Through Connector with Classic Series Barb, 3/16" (4.8 mm) Tubing ID

#### **N035 (-1 -6005 -J2A)**

Straight Through Connector with 500 Series Barb, 3/16" (4.8 mm) Tubing ID

#### **6060 (-6005 -9 -J2A)**

Straight Through Connector with Classic Series Barb, 1/4" (6.4 mm) Tubing ID

#### **N055 (-2 -6005 -9)**

Straight Through Connector with 500 Series Barb, 1/4" (6.4 mm) Tubing ID

#### **N065 (-2)**

Straight Through Connector with 500 Series Barb, 5/16" (8.0 mm) Tubing ID

## Custom Assembly

We produce standard components to fit your current assemblies and devices, but we also provide custom solutions by applying a variety of assembly options, such as joining fittings, connectors, filters, and other components to tubing. From systems using a single fitting to complex configurations utilizing various components, we can design complete assemblies to your requirements.

# TUBE

## Fittings

Nordson MEDICAL offers barbed tubing fittings and tubing connectors in sizes ranging from 1/16" (1.6 mm) to 1" (25.4 mm) tubing ID in over 100 separate configurations in nylon, polypropylene, polycarbonate and PVDF, with other engineering resins available on special order. Available barbed fitting styles include straight tube connectors, elbow fittings, tee fittings, crosses, Y (wye) connectors, multi-port connectors, and multiple reducer combinations.

Several barb styles are offered to provide designers the widest range of assembly forces, pulloff resistance and blowoff resistance – without the need for clamps.

## Large Straight Through Fittings



### Reference Part Shown: N670

#### **N070 (-6005)**

Straight Through Connector with 500 Series Barb, 3/8" (9.5 mm) Tubing ID

#### **N090 (-0)**

Straight Through Connector with 500 Series Barb, 5/8" (16.0 mm) Tubing ID

#### **N6100 (-6005)**

Straight Through Connector with 600 Series Barb, 3/4" (19.0 mm) Tubing ID

#### **N670 (-6005 -9 -J2A)**

Straight Through Connector with 600 Series Barb, 3/8" (9.5 mm) Tubing ID

#### **N690 (-0)**

Straight Through Connector with 600 Series Barb, 5/8" (16.0 mm) Tubing ID

#### **N110 (-0)**

Straight Through Connector with 500 Series Barb, 1" (25.4 mm) Tubing ID

#### **N080 (-6005)**

Straight Through Connector with 500 Series Barb, 1/2" (12.7 mm) Tubing ID

#### **N100 (-6005)**

Straight Through Connector with 500 Series Barb, 3/4" (19.0 mm) Tubing ID

#### **N6110 (-6005)**

Straight Through Connector with 600 Series Barb, 1" (25.4 mm) Tubing ID

#### **N680 (-6005 -J2A)**

Straight Through Connector with 600 Series Barb, 1/2" (12.7 mm) Tubing ID

Due to size, we are not able to display all large tube fittings. Please see [www.nordsonmedical.com](http://www.nordsonmedical.com) for part reference. Minimum package quantities vary by tube IDs. Please verify minimum package sizes when placing orders.

## Straight Through Reducer Fittings



**Reference Part Shown: N035/013**

### **AD (-1 -6005 -J2A)**

Straight Through Reduction Connector with Classic Series Barb, 3/32" (2.4 mm) and 1/16" (1.6 mm) Tubing ID

### **N220/210 (-1 -6005)**

Straight Through Reduction Connector with 200 Series Barb, 3/32" (2.4 mm) and 1/16" (1.6 mm) Tubing ID

### **N420/410 (-1 -6005 -10)**

Straight Through Reduction Connector with 400 Series Barb, 3/32" (2.4 mm) and 1/16" (1.6 mm) Tubing ID

### **N007/004 (-6005 -J2A)**

Straight Through Reduction Connector with 500 Series Barb, 3/32" (2.4 mm) and 1/16" (1.6 mm) Tubing ID

### **AC (-0 -1 -2 -6005 -J2A)**

Straight Through Reduction Connector with Classic Series Barb, 1/8" (3.2 mm) and 1/16" (1.6 mm) Tubing ID

### **N230/210 (-1 -6005 -9)**

Straight Through Reduction Connector with 200 Series Barb, 1/8" (3.2 mm) and 1/16" (1.6 mm) Tubing ID

### **N430/410 (-1)**

Straight Through Reduction Connector with 400 Series Barb, 1/8" (3.2 mm) and 1/16" (1.6 mm) Tubing ID

### **N013/004 (-1 -2 -6005 -9)**

Straight Through Reduction Connector with 500 Series Barb, 1/8" (3.2 mm) and 1/16" (1.6 mm) Tubing ID

### **DC (-1 -6005 -9)**

Straight Through Reduction Connector with Classic Series Barb, 1/8" (3.2 mm) and 3/32" (2.4 mm) Tubing ID

### **N230/220 (-1 -6005 -07 -9 -J2A)**

Straight Through Reduction Connector with 200 Series Barb, 1/8" (3.2 mm) and 3/32" (2.4 mm) Tubing ID

### **N430/420 (-1 -2 -6005 -6012)**

Straight Through Reduction Connector with 400 Series Barb, 1/8" (3.2 mm) and 3/32" (2.4 mm) Tubing ID

### **N013/007 (-1 -2 -6005 -6012 -9002)**

Straight Through Reduction Connector with 500 Series Barb, 1/8" (3.2 mm) and 3/32" (2.4 mm) Tubing ID

# TUBE

## Fittings

Nordson MEDICAL offers barbed tubing fittings and tubing connectors in sizes ranging from 1/16" (1.6 mm) to 1" (25.4 mm) tubing ID in over 100 separate configurations in nylon, polypropylene, polycarbonate and PVDF, with other engineering resins available on special order. Available barbed fitting styles include straight tube connectors, elbow fittings, tee fittings, crosses, Y (wye) connectors, multi-port connectors, and multiple reducer combinations.

Several barb styles are offered to provide designers the widest range of assembly forces, pulloff resistance and blowoff resistance – without the need for clamps.

## Straight Through Reducer Fittings



**Reference Part Shown: N035/013**

### **1040 (-1 -6005 -9)**

Straight Through Reduction Connector with Classic Series Barb, 5/32" (4.0 mm) and 1/16" (1.6 mm) Tubing ID

### **N025/004 (-1 -2)**

Straight Through Reduction Connector with 500 Series Barb, 5/32" (4.0 mm) and 1/16" (1.6 mm) Tubing ID

### **2040 (-1 -6005 -9)**

Straight Through Reduction Connector with Classic Series Barb, 5/32" (4.0 mm) and 3/32" (2.4 mm) Tubing ID

### **N025/007 (-9)**

Straight Through Reduction Connector with 500 Series Barb, 5/32" (4.0 mm) and 3/32" (2.4 mm) Tubing ID

### **3040 (-1 -2 -6005 -9 -J2A)**

Straight Through Reduction Connector with Classic Series Barb, 5/32" (4.0 mm) and 1/8" (3.2 mm) Tubing ID

### **N025/013 (-9 -J2A)**

Straight Through Reduction Connector with 500 Series Barb, 5/32" (4.0 mm) and 1/8" (3.2 mm) Tubing ID

### **2050 (-6005)**

Straight Through Reduction Connector with Classic Series Barb, 3/16" (4.8 mm) and 3/32" (2.4 mm) Tubing ID

### **N035/007 (-2 -9)**

Straight Through Reduction Connector with 500 Series Barb, 3/16" (4.8 mm) and 3/32" (2.4 mm) Tubing ID

### **3050 (-1 -6005 -81 -9 -J2A)**

Straight Through Reduction Connector with Classic Series Barb, 3/16" (4.8 mm) and 1/8" (3.2 mm) Tubing ID

### **N035/013 (-6005 -81)**

Straight Through Reduction Connector with 500 Series Barb, 3/16" (4.8 mm) and 1/8" (3.2 mm) Tubing ID

### **4050 (-2 -6005 -9 -J2A)**

Straight Through Reduction Connector with Classic Series Barb, 3/16" (4.8 mm) and 5/32" (4.0 mm) Tubing ID

Due to size, we are not able to display all large tube fittings. Please see [www.nordsonmedical.com](http://www.nordsonmedical.com) for part reference. Minimum package quantities vary by tube IDs. Please verify minimum package sizes when placing orders.

## Straight Through Reducer Fittings



**Reference Part Shown: N035/013**

**N035/025 (-2 -6005 -9)**

Straight Through Reduction Connector with 500 Series Barb, 3/16" (4.8 mm) and 5/32" (4.0 mm) Tubing ID

**3060 (-1 -6005 -9 -J2A)**

Straight Through Reduction Connector with Classic Series Barb, 1/4" (6.4 mm) and 1/8" (3.2 mm) Tubing ID

**N055/013 (-6005 -J2A)**

Straight Through Reduction Connector with 500 Series Barb, 1/4" (6.4 mm) and 1/8" (3.2 mm) Tubing ID

**4060 (-1 -6005 -J2A)**

Straight Through Reduction Connector with Classic Series Barb, 1/4" (6.4 mm) and 5/32" (4.0 mm) Tubing ID

**N055/025 (-1 -2 -6005)**

Straight Through Reduction Connector with 500 Series Barb, 1/4" (6.4 mm) and 5/32" (4.0 mm) Tubing ID

**5060 (-1 -6005 -9 -9002 -J2A)**

Straight Through Reduction Connector with Classic Series Barb, 1/4" (6.4 mm) and 3/16" (4.8 mm) Tubing ID

**N055/035 (-2 -6005)**

Straight Through Reduction Connector with 500 Series Barb, 1/4" (6.4 mm) and 3/16" (4.8 mm) Tubing ID

**N065/025 (-6005)**

Straight Through Reduction Connector with 500 Series Barb, 5/16" (8.0 mm) and 5/32" (4.0 mm) Tubing ID

**N065/035 (-6005)**

Straight Through Reduction Connector with 500 Series Barb, 5/16" (8.0 mm) and 3/16" (4.8 mm) Tubing ID

**N065/055 (-1 -6005)**

Straight Through Reduction Connector with 500 Series Barb, 5/16" (8.0 mm) and 1/4" (6.4 mm) Tubing ID

# TUBE

## Fittings

Nordson MEDICAL offers barbed tubing fittings and tubing connectors in sizes ranging from 1/16" (1.6 mm) to 1" (25.4 mm) tubing ID in over 100 separate configurations in nylon, polypropylene, polycarbonate and PVDF, with other engineering resins available on special order. Available barbed fitting styles include straight tube connectors, elbow fittings, tee fittings, crosses, Y (wye) connectors, multi-port connectors, and multiple reducer combinations.

Several barb styles are offered to provide designers the widest range of assembly forces, pulloff resistance and blowoff resistance – without the need for clamps.

## Large Straight Through Reducer Fittings



### Reference Part Shown: N070/13

#### **N070/013 (-6005)**

Straight Through Reduction Connector with 500 Series Barb, 3/8" (9.5 mm) and 1/8" (3.2 mm) Tubing ID

#### **N670/630 (-6005)**

Straight Through Reduction Connector with 600 Series Barb, 3/8" (9.5 mm) and 1/8" (3.2 mm) Tubing ID

#### **N070/055 (-0 -6005 -9)**

Straight Through Reduction Connector with 500 Series Barb, 3/8" (9.5 mm) and 1/4" (6.4 mm) Tubing ID

#### **N670/655 (-6005 -9)**

Straight Through Reduction Connector with 600 Series Barb, 3/8" (9.5 mm) and 1/4" (6.4 mm) Tubing ID

#### **N080/055 (-0 -6005)**

Straight Through Reduction Connector with 500 Series Barb, 1/2" (12.7 mm) and 1/4" (6.4 mm) Tubing ID

#### **N680/655 (-6005 -J2A)**

Straight Through Reduction Connector with 600 Series Barb, 1/2" (12.7 mm) and 1/4" (6.4 mm) Tubing ID

#### **N080/070 (-0 -6005)**

Straight Through Reduction Connector with 500 Series Barb, 1/2" (12.7 mm) and 3/8" (9.5 mm) Tubing ID

#### **N680/670 (-6005)**

Straight Through Reduction Connector with 600 Series Barb, 1/2" (12.7 mm) and 3/8" (9.5 mm) Tubing ID

#### **N090/055 (-0)**

Straight Through Reduction Connector with 500 Series Barb, 5/8" (16.0 mm) and 1/4" (6.4 mm) Tubing ID

#### **N690/655 (-6005)**

Straight Through Reduction Connector with 600 Series Barb, 5/8" (16.0 mm) and 1/4" (6.4 mm) Tubing ID

#### **N090/070 (-0)**

Straight Through Reduction Connector with 500 Series Barb, 5/8" (16.0 mm) and 3/8" (9.5 mm) Tubing ID

Due to size, we are not able to display all large tube fittings. Please see [www.nordsonmedical.com](http://www.nordsonmedical.com) for part reference. Minimum package quantities vary by tube IDs. Please verify minimum package sizes when placing orders.

## Large Straight Through Reducer Fittings



### Reference Part Shown: N070/13

#### **N6100/670 (-6005)**

Straight Through Reduction Connector with 600 Series Barb, 3/4" (19.0 mm) and 3/8" (9.5 mm) Tubing ID

#### **N100/080 (-0 -6005)**

Straight Through Reduction Connector with 500 Series Barb, 3/4" (19.0 mm) and 1/2" (12.7 mm) Tubing ID

#### **N6100/680 (-6005)**

Straight Through Reduction Connector with 600 Series Barb, 3/4" (19.0 mm) and 1/2" (12.7 mm) Tubing ID

#### **N6110/680 (-6005)**

Straight Through Reduction Connector with 600 Series Barb, 1" (25.4 mm) and 1/2" (12.7 mm) Tubing ID

#### **N110/100 (-0)**

Straight Through Reduction Connector with 500 Series Barb, 1" (25.4 mm) and 3/4" (19.0 mm) Tubing ID

#### **N6110/6100 (-6005)**

Straight Through Reduction Connector with 600 Series Barb, 1" (25.4 mm) and 3/4" (19.0 mm) Tubing ID

### Looking for Something Different?

Most of our best product ideas have come from you, our customers. While we pride ourselves on our extensive product offering, we recognize that your needs are ever-changing and that our products, too, must adapt to your needs.

If there's a new product you think Nordson MEDICAL should make, please send us an email describing your product concept in as much detail as you desire. We will contact you with any questions, and who knows - the next catalog edition could include products YOU told us to build.

Email us at:  
[designcenter@nordsonmedical.com](mailto:designcenter@nordsonmedical.com)



# TUBE

## Fittings

Nordson MEDICAL offers barbed tubing fittings and tubing connectors in sizes ranging from 1/16" (1.6 mm) to 1" (25.4 mm) tubing ID in over 100 separate configurations in nylon, polypropylene, polycarbonate and PVDF, with other engineering resins available on special order. Available barbed fitting styles include straight tube connectors, elbow fittings, tee fittings, crosses, Y (wye) connectors, multi-port connectors, and multiple reducer combinations.

Several barb styles are offered to provide designers the widest range of assembly forces, pulloff resistance and blowoff resistance – without the need for clamps.

## Elbow Fittings



**Reference Part  
Shown: L230**

### **L10 (-2 -6005)**

Elbow Connector with Classic Series Barb,  
1/16" (1.6 mm) Tubing ID

### **L230 (-1 -2 -6005 -J2A)**

Elbow Connector with 200 Series Barb,  
1/8" (3.2 mm) Tubing ID

### **L210 (-1 -2 -6005)**

Elbow Connector with 200 Series Barb,  
1/16" (1.6 mm) Tubing ID

### **L430 (-1 -2 -6005)**

Elbow Connector with 400 Series Barb,  
1/8" (3.2 mm) Tubing ID

### **L410 (-1 -6005)**

Elbow Connector with 400 Series Barb,  
1/16" (1.6 mm) Tubing ID

### **L40 (-1 -6005)**

Elbow Connector with Classic Series Barb,  
5/32" (4.0 mm) Tubing ID

### **L20 (-6005)**

Elbow Connector with Classic Series Barb,  
3/32" (2.4 mm) Tubing ID

### **L440 (-2)**

Elbow Connector with 400 Series Barb,  
5/32" (4.0 mm) Tubing ID

### **L220 (-1 -6005 -6012 -9002)**

Elbow Connector with 200 Series Barb,  
3/32" (2.4 mm) Tubing ID

### **L50 (-1 -6005)**

Elbow Connector with Classic Series Barb,  
3/16" (4.8 mm) Tubing ID

### **L420 (-1 -6005 -J2A)**

Elbow Connector with 400 Series Barb,  
3/32" (2.4 mm) Tubing ID

### **L60 (-1 -6005)**

Elbow Connector with Classic Series Barb,  
1/4" (6.4 mm) Tubing ID

### **L30 (-1 -2 -6005)**

Elbow Connector with Classic Series Barb,  
1/8" (3.2 mm) Tubing ID

## Need Samples for Evaluation?

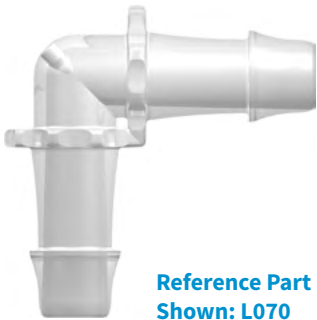
You can call to request most of our standard product in quantities of 5, or less, for free application evaluation.

+1 (970) 267-5200

Toll Free: (888) 404-5837

Due to size, we are not able to display all large tube fittings. Please see [www.nordsonmedical.com](http://www.nordsonmedical.com) for part reference. Minimum package quantities vary by tube IDs. Please verify minimum package sizes when placing orders.

## Large Elbow Fittings



Reference Part  
Shown: L070

### **L070 (-6005)**

Elbow Connector with 500 Series Barb,  
3/8" (9.5 mm) Tubing ID

### **L080 (-0 -6005)**

Elbow Connector with 500 Series Barb,  
1/2" (12.7 mm) Tubing ID

### **L090 (-0)**

Elbow Connector with 500 Series Barb,  
5/8" (16.0 mm) Tubing ID

### **L100 (-0 -6005)**

Elbow Connector with 500 Series Barb,  
3/4" (19.0 mm) Tubing ID

### **L110 (-0 -6005)**

Elbow Connector with 500 Series Barb, 1"  
(25.4 mm) Tubing ID

### **L6110 (-6005)**

Elbow Connector with 600 Series Barb, 1"  
(25.4 mm) Tubing ID

### **CF494 (-6005)**

Low-Profile Elbow Connector with Custom  
600 Series Barb, 1" (25.4 mm) Tubing ID

## Need More Details?

Part drawings, minimum order quantities,  
and CAD requests can be found online at  
[www.nordsonmedical.com](http://www.nordsonmedical.com).

# TUBE

## Fittings

Nordson MEDICAL offers barbed tubing fittings and tubing connectors in sizes ranging from 1/16" (1.6 mm) to 1" (25.4 mm) tubing ID in over 100 separate configurations in nylon, polypropylene, polycarbonate and PVDF, with other engineering resins available on special order. Available barbed fitting styles include straight tube connectors, elbow fittings, tee fittings, crosses, Y (wye) connectors, multi-port connectors, and multiple reducer combinations.

Several barb styles are offered to provide designers the widest range of assembly forces, pulloff resistance and blowoff resistance – without the need for clamps.

## Elbow Reducer Fittings



**Reference Part  
Shown: L230/220**

### **L220/210 (-1 -6005 -9)**

Elbow Reduction Connector with 200 Series Barb, 3/32" (2.4 mm) and 1/16" (1.6 mm) Tubing ID

### **L230/220 (-1 -2 -6005 -9)**

Elbow Reduction Connector with 200 Series Barb, 1/8" (3.2 mm) and 3/32" (2.4 mm) Tubing ID

### **L230/210 (-1 -2 -6005 -J2A)**

Elbow Reduction Connector with 200 Series Barb, 1/8" (3.2 mm) and 1/16" (1.6 mm) Tubing ID

### **L430/420 (-1 -2)**

Elbow Reduction Connector with 400 Series Barb, 1/8" (3.2 mm) and 3/32" (2.4 mm) Tubing ID

## Large Elbow Reducer Fittings



**Reference Part  
Shown: L070/055**

### **L070/055 (-0 -6005)**

Elbow Reduction Connector with 500 Series Barb, 3/8" (9.5 mm) and 1/4" (6.4 mm) Tubing ID

### **L100/080 (-0)**

Elbow Reduction Connector with 500 Series Barb, 3/4" (19.0 mm) and 1/2" (12.7 mm) Tubing ID

### **L080/070 (-0)**

Elbow Reduction Connector with 500 Series Barb, 1/2" (12.7 mm) and 3/8" (9.5 mm) Tubing ID

### **L110/100 (-0)**

Elbow Reduction Connector with 500 Series Barb, 1" (25.4 mm) and 3/4" (19.0 mm) Tubing ID

Due to size, we are not able to display all large tube fittings. Please see [www.nordsonmedical.com](http://www.nordsonmedical.com) for part reference. Minimum package quantities vary by tube IDs. Please verify minimum package sizes when placing orders.

## Tee Fittings



Reference Part Shown: **T230**

### **T10 (-1 -6005)**

Tee Connector with Classic Series Barb,  
1/16" (1.6 mm) Tubing ID

### **T210 (-1 -2 -6005)**

Tee Connector with 200 Series Barb, 1/16"  
(1.6 mm) Tubing ID

### **T410 (-1)**

Tee Connector with 400 Series Barb, 1/16"  
(1.6 mm) Tubing ID

### **T20 (-1 -6005)**

Tee Connector with Classic Series Barb,  
3/32" (2.4 mm) Tubing ID

### **T220 (-1 -6005 -6012)**

Tee Connector with 200 Series Barb, 3/32"  
(2.4 mm) Tubing ID

### **T420 (-1 -6005 -J2A)**

Tee Connector with 400 Series Barb, 3/32"  
(2.4 mm) Tubing ID

### **T30 (-1 -2 -6005 -9)**

Tee Connector with Classic Series Barb,  
1/8" (3.2 mm) Tubing ID

### **T230 (-1 -2 -6005 -J2A)**

Tee Connector with 200 Series Barb, 1/8"  
(3.2 mm) Tubing ID

### **T430 (-6005 -9002 -J2A)**

Tee Connector with 400 Series Barb, 1/8"  
(3.2 mm) Tubing ID

### **T013 (-6005)**

Tee Connector with 500 Series Barb, 1/8"  
(3.2 mm) Tubing ID

### **T40 (-1 -6005)**

Tee Connector with Classic Series Barb,  
5/32" (4.0 mm) Tubing ID

### **T250 (-2 -6005)**

Tee Connector with 200 Series Barb,  
3/16" (4.8 mm) Tubing ID

### **T60 (-1 -2 -6005)**

Tee Connector with Classic Series Barb,  
1/4" (6.4 mm) Tubing ID

### **T055 (-6005)**

Tee Connector with 500 Series Barb,  
1/4" (6.4 mm) Tubing ID

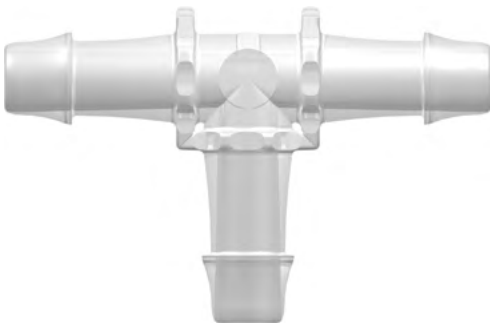
# TUBE

## Fittings

Nordson MEDICAL offers barbed tubing fittings and tubing connectors in sizes ranging from 1/16" (1.6 mm) to 1" (25.4 mm) tubing ID in over 100 separate configurations in nylon, polypropylene, polycarbonate and PVDF, with other engineering resins available on special order. Available barbed fitting styles include straight tube connectors, elbow fittings, tee fittings, crosses, Y (wye) connectors, multi-port connectors, and multiple reducer combinations.

Several barb styles are offered to provide designers the widest range of assembly forces, pulloff resistance and blowoff resistance – without the need for clamps.

### Large Tee Fittings



Reference Part Shown: **T070**

#### **T070 (-6005 -9)**

Tee Connector with 500 Series Barb, 3/8"  
(9.5 mm) Tubing ID

#### **T670 (-1 -6005)**

Tee Connector with 600 Series Barb, 3/8"  
(9.5 mm) Tubing ID

#### **T080 (-0 -6005)**

Tee Connector with 500 Series Barb, 1/2"  
(12.7 mm) Tubing ID

#### **T680 (-6005 -J2A)**

Tee Connector with 600 Series Barb, 1/2"  
(12.7 mm) Tubing ID

#### **T690 (-6005)**

Tee Connector with 600 Series Barb, 5/8"  
(16.0 mm) Tubing ID

#### **T100 (-6005)**

Tee Connector with 500 Series Barb, 3/4"  
(19.0 mm) Tubing ID

#### **T6100 (-6005)**

Tee Connector with 600 Series Barb, 3/4"  
(19.0 mm) Tubing ID

#### **T110 (-0)**

Tee Connector with 500 Series Barb,  
1" (25.4 mm) Tubing ID

#### **T6110 (-6005)**

Tee Connector with 600 Series Barb,  
1" (25.4 mm) Tubing ID

Due to size, we are not able to display all large tube fittings. Please see [www.nordsonmedical.com](http://www.nordsonmedical.com) for part reference. Minimum package quantities vary by tube IDs. Please verify minimum package sizes when placing orders.

## Tee Reducer Fittings



Reference Part Shown: T360/230

### **T410/420 (-2 -6005)**

Tee Reduction Connector with 400 Series Barb, 1/16" (1.6 mm) and 3/32" (2.4 mm) Tubing ID

### **T210/230 (-1 -6005 -9)**

Tee Reduction Connector with 200 Series Barb, 1/16" (1.6 mm) and 1/8" (3.2 mm) Tubing ID

### **T410/430 (-2 -6005)**

Tee Reduction Connector with 400 Series Barb, 1/16" (1.6 mm) and 1/8" (3.2 mm) Tubing ID

### **T220/210 (-1 -2 -6005 -9)**

Tee Reduction Connector with 200 Series Barb, 3/32" (2.4 mm) and 1/16" (1.6 mm) Tubing ID

### **T220R210 (-2 -9)**

Tee Reduction Connector with 200 Series Barb, 3/32" (2.4 mm) and 1/16" (1.6 mm) Tubing ID

### **T420/410 (-2)**

Tee Reduction Connector with 400 Series Barb, 3/32" (2.4 mm) and 1/16" (1.6 mm) Tubing ID

### **T420R410 (-1 -2)**

Tee Reduction Connector with 400 Series Barb, 3/32" (2.4 mm) and 1/16" (1.6 mm) Tubing ID

### **T210/220 (-6005 -9)**

Tee Reduction Connector with 200 Series Barb, 3/32" (2.4 mm) and 1/16" (1.6 mm) Tubing ID

### **T220/230 (-1 -6005 -9)**

Tee Reduction Connector with 200 Series Barb, 3/32" (2.4 mm) and 1/8" (3.2 mm) Tubing ID

### **T420/430 (-1)**

Tee Reduction Connector with 400 Series Barb, 3/32" (2.4 mm) and 1/8" (3.2 mm) Tubing ID

### **T230/210 (-1 -2 -6005 -J2A)**

Tee Reduction Connector with 200 Series Barb, 1/8" (3.2 mm) and 1/16" (1.6 mm) Tubing ID

### **T230R210 (-1)**

Tee Reduction Connector with 200 Series Barb, 1/8" (3.2 mm) and 1/16" (1.6 mm) Tubing ID

# TUBE

## Fittings

Nordson MEDICAL offers barbed tubing fittings and tubing connectors in sizes ranging from 1/16" (1.6 mm) to 1" (25.4 mm) tubing ID in over 100 separate configurations in nylon, polypropylene, polycarbonate and PVDF, with other engineering resins available on special order. Available barbed fitting styles include straight tube connectors, elbow fittings, tee fittings, crosses, Y (wye) connectors, multi-port connectors, and multiple reducer combinations.

Several barb styles are offered to provide designers the widest range of assembly forces, pulloff resistance and blowoff resistance – without the need for clamps.

### Tee Reducer Fittings



Reference Part Shown: **T360/230**

#### **T430/410 (-2)**

Tee Reduction Connector with 400 Series Barb, 1/8" (3.2 mm) and 1/16" (1.6 mm) Tubing ID

#### **T430R410 (-1 -2 -6005)**

Tee Reduction Connector with 400 Series Barb, 1/8" (3.2 mm) and 1/16" (1.6 mm) Tubing ID

#### **T230/220 (-1 -2 -6005 -9 -J2A)**

Tee Reduction Connector with 200 Series Barb, 1/8" (3.2 mm) and 3/32" (2.4 mm) Tubing ID

#### **T230R220 (-9)**

Tee Reduction Connector with 200 Series Barb, 1/8" (3.2 mm) and 3/32" (2.4 mm) Tubing ID

#### **T430/420 (-1 -2 -3)**

Tee Reduction Connector with 400 Series Barb, 1/8" (3.2 mm) and 3/32" (2.4 mm) Tubing ID

#### **T360/220 (-2 -6005 -9)**

Tee Reduction Connector with 200 and 300 Series Barb, 1/4" (6.4 mm) and 3/32" (2.4 mm) Tubing ID

#### **T360/230 (-1 -6005 -9)**

Tee Reduction Connector with 200 and 300 Series Barb, 1/4" (6.4 mm) and 1/8" (3.2 mm) Tubing ID

#### **T360/250 (-1 -2 -9)**

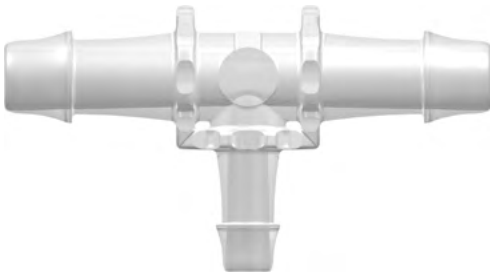
Tee Reduction Connector with 200 and 300 Series Barb, 1/4" (6.4 mm) and 3/16" (4.8 mm) Tubing ID

### Need More Details?

Part drawings, minimum order quantities, and CAD requests can be found online at [www.nordsonmedical.com](http://www.nordsonmedical.com).

Due to size, we are not able to display all large tube fittings. Please see [www.nordsonmedical.com](http://www.nordsonmedical.com) for part reference. Minimum package quantities vary by tube IDs. Please verify minimum package sizes when placing orders.

## Large Tee Reducer Fittings



Reference Part Shown: **T070/055**

### **T070/055 (-0 -6005 -9)**

Tee Reduction Connector with 500 Series Barbs, 3/8" (9.5 mm) and 1/4" (6.4 mm) Tubing ID

### **T080/055 (-0 -6005)**

Tee Reduction Connector with 500 Series Barb, 1/2" (12.7 mm) and 1/4" (6.4 mm) Tubing ID

### **T080/070 (-6005)**

Tee Reduction Connector with 500 Series Barbs, 1/2" (12.7 mm) and 3/8" (9.5 mm) Tubing ID

### **T100/080 (-0 -6005 -9)**

Tee Reduction Connector with 500 Series Barbs, 3/4" (19.0 mm) and 1/2" (12.7 mm) Tubing ID

### **T110/100 (-0 -6005)**

Tee Reduction Connector with 500 Series Barb, 1" (25.4 mm) and 3/4" (19.0 mm) Tubing ID

### **T670/655 (-6005)**

Tee Reduction Connector with 600 Series Barb, 3/8" x 2 (9.5 mm) and 1/4" (6.4 mm) Tubing ID

### **T680/655 (-6005)**

Tee Reduction Connector with 600 Series Barb, 1/2" x 2 (12.7 mm) and 1/4" (6.4 mm) Tubing ID

### **T680/670 (-6005)**

Tee Reduction Connector with 600 Series Barb, 1/2" x 2 (12.7 mm) and 3/8" (9.5 mm) Tubing ID

### **T6100/670 (-6005)**

Tee Reduction Connector with 600 Series Barb, 3/4" x 2 (19.0 mm) and 3/8" (9.5 mm) Tubing ID

### **T6100/680 (-6005)**

Tee Reduction Connector with 600 Series Barb, 3/4" x 2 (19.0 mm) and 1/2" (12.7 mm) Tubing ID

### **T6110/6100 (-6005)**

Tee Reduction Connector with 600 Series Barb, 1" x 2 (25.4 mm) and 3/4" (19.0 mm) Tubing ID



# TUBE

## Fittings

Nordson MEDICAL offers barbed tubing fittings and tubing connectors in sizes ranging from 1/16" (1.6 mm) to 1" (25.4 mm) tubing ID in over 100 separate configurations in nylon, polypropylene, polycarbonate and PVDF, with other engineering resins available on special order. Available barbed fitting styles include straight tube connectors, elbow fittings, tee fittings, crosses, Y (wye) connectors, multi-port connectors, and multiple reducer combinations.

Several barb styles are offered to provide designers the widest range of assembly forces, pulloff resistance and blowoff resistance – without the need for clamps.

## Y Fittings



Reference Part Shown: Y250

### **Y210 (-1 -2 -6005 -9 -J2A)**

Y Connector with 200 Series Barb, 1/16"  
(1.6 mm) Tubing ID

### **Y410 (-6005)**

Y Connector with 400 Series Barb, 1/16"  
(1.6 mm) Tubing ID

### **Y220 (-1 -2 -6005 -9 -J2A)**

Y Connector with 200 Series Barb, 3/32"  
(2.4 mm) Tubing ID

### **Y420 (-1 -6005)**

Y Connector with 400 Series Barb, 3/32"  
(2.4 mm) Tubing ID

### **Y230 (-1 -2 -6005 -9 -9002 -9010 -J2A)**

Y Connector with 200 Series Barb, 1/8"  
(3.2 mm) Tubing ID

### **Y430 (-1 -2 -6005 -J2A)**

Y Connector with 400 Series Barb, 1/8"  
(3.2 mm) Tubing ID

### **Y013 (-6005)**

Y Connector with 500 Series Barb, 1/8"  
(3.2 mm) Tubing ID

### **Y240 (-1 -6005 -9 -J2A)**

Y Connector with 200 Series Barb, 5/32"  
(4.0 mm) Tubing ID

### **Y250 (-1 -6005 -9 -J2A)**

Y Connector with 200 Series Barb, 3/16"  
(4.8 mm) Tubing ID

### **Y450 (-1 -6005 -6012)**

Y Connector with 400 Series Barb, 3/16"  
(4.8 mm) Tubing ID

### **Y260 (-1 -2 -6005 -9 -9002 -J2A)**

Y Connector with 200 Series Barb, 1/4"  
(6.4 mm) Tubing ID

### **Y460 (-1 -6005 -9 -J2A)**

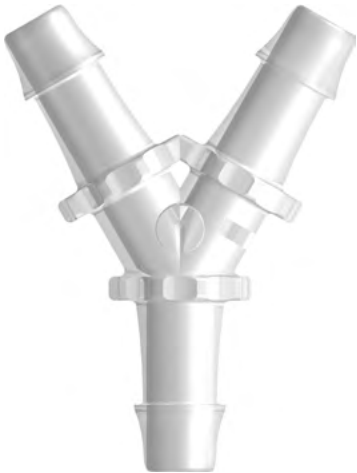
Y Connector with 400 Series Barb, 1/4"  
(6.4 mm) Tubing ID

### **Y055 (-6005)**

Y Connector with 500 Series Barb, 1/4"  
(6.4 mm) Tubing ID

Due to size, we are not able to display all large tube fittings. Please see [www.nordsonmedical.com](http://www.nordsonmedical.com) for part reference. Minimum package quantities vary by tube IDs. Please verify minimum package sizes when placing orders.

## Large Y Fittings



Reference Part Shown: Y070

### Y070 (-6005)

Y Connector with 500 Series Barb, 3/8" (9.5 mm) Tubing ID

### Y670 (-6005 -9 -J2A)

Y Connector with 600 Series Barb, 3/8" (9.5 mm) Tubing ID

### Y080 (-0 -6005)

Y Connector with 500 Series Barb, 1/2" (12.7 mm) Tubing ID

### Y680 (-6005 -J2A)

Y Connector with 600 Series Barb, 1/2" (12.7 mm) Tubing ID

### Y090 (-0 -6005 -J2A)

Y Connector with 500 Series Barb, 5/8" (16.0 mm) Tubing ID

### Y630/655 (-6005)

Y Reduction Connector with 600 Series Barb, 1/8" x 2 (3.2 mm) and 1/4" (6.4 mm) Tubing ID

### Y655/670 (-6005)

Y Reduction Connector with 600 Series Barb, 1/4" x 2 (6.4 mm) and 3/8" (9.5 mm) Tubing ID

### Y690 (-6005)

Y Connector with 600 Series Barb, 5/8" (16.0 mm) Tubing ID

### Y100 (-0 -6005 -J2A)

Y Connector with 500 Series Barb, 3/4" (19.0 mm) Tubing ID

### Y6100 (-6005)

Y Connector with 600 Series Barb, 3/4" (19.0 mm) Tubing ID

### Y110 (-6005)

Y Connector with 500 Series Barb, 1" (25.4 mm) Tubing ID

### Y6110 (-6005)

Y Connector with 600 Series Barb, 1" (25.4 mm) Tubing ID

### Y670/680 (-6005)

Y Reduction Connector with 600 Series Barb, 3/8" x 2 (9.5 mm) and 1/2" (12.7 mm) Tubing ID

### Y6100/6110 (-6005)

Y Reduction Connector with 600 Series Barb, 3/4" x 2 (19.0 mm) and 1" (25.4 mm) Tubing ID

## Large Y Reducer Fittings



Reference Part Shown: Y630/655

# TUBE

## Fittings

Nordson MEDICAL offers barbed tubing fittings and tubing connectors in sizes ranging from 1/16" (1.6 mm) to 1" (25.4 mm) tubing ID in over 100 separate configurations in nylon, polypropylene, polycarbonate and PVDF, with other engineering resins available on special order. Available barbed fitting styles include straight tube connectors, elbow fittings, tee fittings, crosses, Y (wye) connectors, multi-port connectors, and multiple reducer combinations.

Several barb styles are offered to provide designers the widest range of assembly forces, pulloff resistance and blowoff resistance – without the need for clamps.

## Multiport Fittings



Reference Part Shown: **4PX230**

### **3PF210 (-6005)**

Three-Port F Style Manifold with 200 Series Barb, 1/16" (1.6 mm) Tubing ID

### **3PF220 (-6005)**

Three-Port F Style Manifold with 200 Series Barb, 3/32" (2.4 mm) Tubing ID

### **3PF230 (-1 -6005)**

Three-Port F Style Manifold with 200 Series Barb, 1/8" (3.2 mm) Tubing ID

### **4PX210 (-1 -6005)**

Four-Port Cross Style Manifold with 200 Series Barb, 1/16" (1.6 mm) Tubing ID

### **4PX220 (-1 -6005)**

Four-Port Cross Style Manifold with 200 Series Barb, 3/32" (2.4 mm) Tubing ID

### **4PX230 (-1 -6005)**

Four-Port Cross Style Manifold with 200 Series Barb, 1/8" (3.2 mm) Tubing ID

### **4PDL220 (-1)**

Four-Port Double Elbow Style Manifold with 200 Series Barb, 3/32" (2.4 mm) Tubing ID

### **4PLL210 (-6005)**

Four-Port Thru Flow Double Elbow Style Manifold with 200 Series Barb, 1/16" (1.6 mm) Tubing ID

## Need Samples for Evaluation?

You can call to request most of our standard product in quantities of 5, or less, for free application evaluation.

+1 (970) 267-5200

Toll Free: (888) 404-5837

Due to size, we are not able to display all large tube fittings. Please see [www.nordsonmedical.com](http://www.nordsonmedical.com) for part reference. Minimum package quantities vary by tube IDs. Please verify minimum package sizes when placing orders.

## Multiport Fittings



Reference Part Shown: **4PX230**

### **4PLL220 (-1 -6005 -9)**

Four-Port Thru Flow Double Elbow Style Manifold with 200 Series Barb, 3/32" (2.4 mm) Tubing ID

### **4PLL230 (-1 -2 -6005)**

Four-Port Thru Flow Double Elbow Style Manifold with 200 Series Barb, 1/8" (3.2 mm) Tubing ID

### **6PDT220 (-6005)**

Six-Port Double T Style Manifold with 200 Series Barb, 3/32" (2.4 mm) Tubing ID

### **6PDT230 (-1)**

Six-Port Double T Style Manifold with 200 Series Barb, 1/8" (3.2 mm) Tubing ID

### **6PTT230 (-6005)**

Six-Port Thru Flow Double T Style Manifold with 200 Series Barb, 1/8" (3.2 mm) Tubing ID

### Need it Fast?

You can order any of our thousands of parts online now with no order \$ minimums, 24 hours a day, 7 days a week!  
[www.nordsonmedical.com](http://www.nordsonmedical.com)

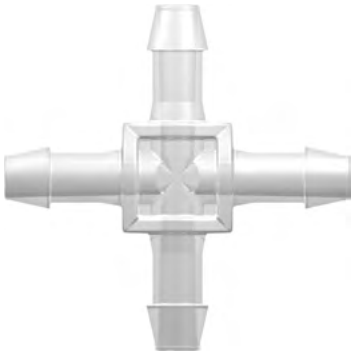
# TUBE

## Fittings

Nordson MEDICAL offers barbed tubing fittings and tubing connectors in sizes ranging from 1/16" (1.6 mm) to 1" (25.4 mm) tubing ID in over 100 separate configurations in nylon, polypropylene, polycarbonate and PVDF, with other engineering resins available on special order. Available barbed fitting styles include straight tube connectors, elbow fittings, tee fittings, crosses, Y (wye) connectors, multi-port connectors, and multiple reducer combinations.

Several barb styles are offered to provide designers the widest range of assembly forces, pulloff resistance and blowoff resistance – without the need for clamps.

### Large Multiport Fittings



Reference Part Shown: **4PX655**

#### **4PX655 (-6005)**

Four-Port Cross Style Manifold with 600 Series Barb, 1/4" (6.4 mm) Tubing ID

#### **4PX670 (-6005)**

Four-Port Cross Style Manifold with 600 Series Barb, 3/8" (9.5 mm) Tubing ID

#### **4PX680 (-6005)**

Four-Port Cross Style Manifold with 600 Series Barb, 1/2" (12.7 mm) Tubing ID

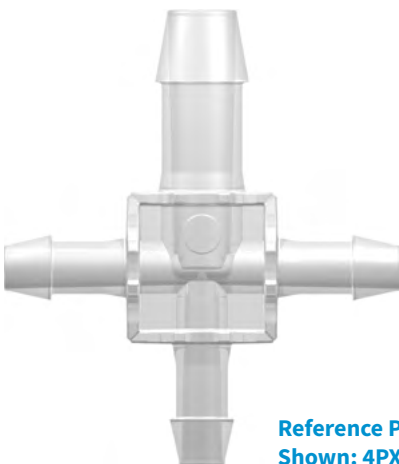
#### **4PX6100 (-6005)**

Four-Port Cross Style Manifold with 600 Series Barb, 3/4" (19.0 mm) Tubing ID

#### **4PX6110 (-6005)**

Four-Port Cross Style Manifold with 600 Series Barb, 1" (25.4 mm) Tubing ID

### Large Multiport Reducer Fittings



Reference Part Shown: **4PX670/655**

#### **4PX670/655 (-6005)**

Four-Port Cross Style Manifold with 600 Series Barb, 3/8" (9.5 mm) and 1/4" x 3 (6.4 mm) Tubing ID

#### **4PX680/670 (-6005)**

Four-Port Cross Style Manifold with 600 Series Barb, 1/2" (12.7 mm) and 3/8" x 3 (9.5 mm) Tubing ID

#### **4PX6110/6100 (-6005)**

Four-Port Cross Style Manifold with 600 Series Barb, 1" (25.4 mm) and 3/4" x 3 (19.0 mm) Tubing ID

Due to size, we are not able to display all large tube fittings. Please see [www.nordsonmedical.com](http://www.nordsonmedical.com) for part reference. Minimum package quantities vary by tube IDs. Please verify minimum package sizes when placing orders.

## Press-In Plugs



Reference Part Shown: **PIP240**

### **PIP10 (-1)**

Press-In Plug with Classic Series Barb,  
1/16" (1.6 mm) Tubing ID

### **PIP210 (-2)**

Press-In Plug with 200 Series Barb,  
1/16" (1.6 mm) Tubing ID

### **PIP20 (-6005)**

Press-In Plug with Classic Series Barb,  
3/32" (2.4 mm) Tubing ID

### **PIP220 (-1 -6005 -6012 -J2A)**

Press-In Plug with 200 Series Barb,  
3/32" (2.4 mm) Tubing ID

### **PIP30 (-6005 -J2A)**

Press-In Plug with Classic Series Barb,  
1/8" (3.2 mm) Tubing ID

### **PIP230 (-1 -6005 -6012 -J2A)**

Press-In Plug with 200 Series Barb,  
1/8" (3.2 mm) Tubing ID

### **PIP40 (-6005)**

Press-In Plug with Classic Series Barb,  
5/32" (4.0 mm) Tubing ID

### **PIP240 (-1 -2)**

Press-In Plug with 200 Series Barb,  
5/32" (4.0 mm) Tubing ID

### **PIP50 (-1 -6005)**

Press-In Plug with Classic Series Barb,  
3/16" (4.8 mm) Tubing ID

### **PIP60 (-6005 -J2A)**

Press-In Plug with Classic Series Barb,  
1/4" (6.4 mm) Tubing ID

# TUBE

## Fittings

Nordson MEDICAL offers barbed tubing fittings and tubing connectors in sizes ranging from 1/16" (1.6 mm) to 1" (25.4 mm) tubing ID in over 100 separate configurations in nylon, polypropylene, polycarbonate and PVDF, with other engineering resins available on special order. Available barbed fitting styles include straight tube connectors, elbow fittings, tee fittings, crosses, Y (wye) connectors, multi-port connectors, and multiple reducer combinations.

Several barb styles are offered to provide designers the widest range of assembly forces, pulloff resistance and blowoff resistance – without the need for clamps.

### Large Press-In Plugs



Reference Part Shown: **PIP080**

#### **PIP070 (-6005)**

Press-In Plug with 500 Series Barb,  
3/8" (9.5 mm) Tubing ID

#### **PIP680 (-6005)**

Press-In Plug with 600 Series Barb,  
1/2" (12.7 mm) Tubing ID

#### **PIP670 (-6005)**

Press-In Plug with 600 Series Barb,  
3/8" (9.5 mm) Tubing ID

#### **PIP6100 (-6005)**

Press-In Plug with 600 Series Barb,  
3/4" (19.0 mm) Tubing ID

#### **PIP080 (-6005)**

Press-In Plug with 500 Series Barb,  
1/2" (12.7 mm) Tubing ID

#### **PIP6110 (-6005)**

Press-In Plug with 600 Series Barb,  
1" (25.4 mm) Tubing ID

### Ultrasonically Weldable Barb



Reference Part Shown: **U30**

#### **U10 (-1 -2 -9)**

Ultrasonically Weldable Fitting to Classic  
Series Barb, 1/16" (1.6 mm) Tubing ID

#### **U30 (-1 -7)**

Ultrasonically Weldable Fitting to Classic  
Series Barb, 1/8" (3.2 mm) Tubing ID

#### **U20 (-1 -7)**

Ultrasonically Weldable Fitting to Classic  
Series Barb, 3/32" (2.4 mm) Tubing ID

Due to size, we are not able to display all large tube fittings. Please see [www.nordsonmedical.com](http://www.nordsonmedical.com) for part reference. Minimum package quantities vary by tube IDs. Please verify minimum package sizes when placing orders.

## Panel Mounts



Reference Part Shown: **PMS230-210**

### **PMK210 (-1 -6005)**

Panel Mount Connector 10-32 UNF to 200 Series Barb, 1/16" (1.6 mm) Tubing ID

### **PMS230 (-1 -6005)**

Panel Mount Connector 1/4-28 UNF to 200 Series Barb, 1/8" (3.2 mm) Tubing ID

### **PMK220 (-1 -6005)**

Panel Mount Connector 10-32 UNF to 200 Series Barb, 3/32" (2.4 mm) Tubing ID

### **PMS230-210 (-1)**

Panel Mount Reduction Connector 1/4-28 UNF to 200 Series Barb, 1/8" (3.2 mm) and 1/16" (1.6 mm) Tubing ID

## Panel Mount Accessories



Reference Part Shown: **CCR**

### **CCR (-1 -2 -3 -07)**

Color Coded Ring (For Use with PMS, PMK, FTLLB or FTLB Panel Mount Fittings)

### **PMSN (-XO)**

Panel Mount Nut 1/4-28 UNF with 7/16" Hex (For Use with PMS, FTLB or FTLLB Panel Mount Fittings)

### **CCLR (-1 -2 -3 -4 -5 -06 -07)**

Color Coded Lock Ring (For Use with PMS, PMK, FTLLB or FTLB Panel Mount Fittings)

### **LNS (-1 -2 -3 -4 -5 -06 -07 -J2A)**

1/4-28 UNF Panel Mount Lock Nut (For Use with PMS, FTLB or FTLLB Panel Mount Fittings)

### **PMKN (-XO)**

Panel Mount Nut 10-32 UNF with 3/8" Hex (For Use with PMK Panel Mount Fittings)



# LUER

## Fittings

Nordson MEDICAL's luer tapers are made to the ISO 594-1 and ISO 594-2 standards, and may be connected to other luers meeting these ISO standards. Please test your application to verify the performance of the interconnection. Nordson MEDICAL's luer fittings come in over 100 configurations and several materials for the device designer, joining tubing from 1/16" (1.6 mm) ID to 1/4" (6.4 mm) ID.

Due to space considerations, we only show a subset of our luer product family. To see the full line, please visit [www.nordsonmedical.com](http://www.nordsonmedical.com).



### **MLRL055 (-1 -9)**

Male Luer to 500 Series Barb, 1/4" (6.4 mm) Tubing ID  
(May be used with separate rotating lock ring: FSLLR)



### **MTLL055 (-1 -3 -4 -06 -6005 -9 -9002)**

Male Luer Integral Lock Ring to 500 Series Barb,  
1/4" (6.4 mm) Tubing ID



### **MTLL360 (-1 -6005 -9 -9002 -J2A)**

Male Luer Integral Lock Ring to 300 Series Barb,  
1/4" (6.4 mm) Tubing ID



### **FSLLR (-1 -2 -3 -4 -5 -6005 -07 -9 -9002)**

Finger Snap Luer Lock Ring



### **FTLL055 (-1 -3 -4 -6005 -07 -9 -9002)**

Female Luer Thread Style to 500 Series Barb,  
1/4" (6.4 mm) Tubing ID



### **FTLL360 (-1 -5 -6005 -9 -9002 -J2A)**

Female Luer Thread Style to 300 Series Barb,  
1/4" (6.4 mm) Tubing ID

## Features & Benefits:

- Published ISO design standard
  - Well understood worldwide
  - Often assures interconnections without the need to retrofit
- Rotating lock permits tube positioning prior to tightening
  - Minimizes twisting & kinking of tubing
- Tapered cone seal
- Available In several materials & configurations
- Inexpensive & easy to use

## Specifications:

### Tubing Sizes:

- 1/16" (1.6 mm) to 1/4" (6.4 mm)

### Standards Compliant:

- ISO 594-1 and ISO 594-2 standards

## It's a Lock with Nordson MEDICAL!

Our MLRL and MLSL Series of fittings can be used both as a slip luer or as a locking luer with the addition of our FSLLR luer lock ring, which allows color coding without flow path contact. Our MLSL/FSLLR combination results in a stationary lock ring. Use a combination of MLRL and FSLLR to create a color coded rotating lock ring.



## Looking for Something Different?

Most of our best product ideas have come from you, our customers. While we pride ourselves on our extensive product offering, we recognize that your needs are ever-changing and that our products, too, must adapt to your needs.

If there's a new product you think Nordson MEDICAL should make, please send us an email describing your product concept in as much detail as you desire. We will contact you with any questions, and who knows - the next catalog edition could include products YOU told us to build.

Email us at:  
[designcenter@nordsonmedical.com](mailto:designcenter@nordsonmedical.com)

# NV Series

## Needlefree Swabable Valves

Nordson MEDICAL offers cost efficient needlefree swabable valves featuring higher flow rates, low priming volumes, and a straight through design for unobstructed flow. The valves don't require caps, and the septum surface can be easily disinfected. Designed for the injection and aspiration of fluids, particularly for sampling applications, the hermetic septum seal reduces the risk of biofilm formation and contamination. Available in widely used polycarbonate and copolyester materials, these valves are compatible with industry standard luer syringes and connectors, validating them as an efficient component solution for the OEM market.



### **NVFMLLCP**

Swabable Straight Valve, Female Luer to Male Luer Lock, Copolyester



### **NVFMLLPC**

Swabable Straight Valve, Female Luer to Male Luer Lock, Polycarbonate



### **NVFMLLS-001**

Swabable Straight Valve, Female Luer to Male Luer Lock, Polycarbonate



### **NV FY401CP**

Swabable 'Y' Valve, Female Luer Y Port to 4.01 mm Tube Sockets, Copolyester



### **NV FY401PC**

Swabable 'Y' Valve, Female Luer Y Port to 4.01 mm Tube Sockets, Polycarbonate



### **NV FY42S-001**

Swabable 'Y' Valve, Female Luer Y Port to 4.2 mm Bondable Sockets, Polycarbonate

## Features & Benefits:

- Valve stems & bodies securely mate with standard luer syringes & connectors
- Several configurations that are easy to customize
- Normally closed system to reduce the risk of infection
- Low priming volume & high flow rates
- Straight through design for unobstructed flow
- Gamma radiation stable & EtO compatible
- Not made with natural rubber latex or DEHP

## Non-Sterile Medical Device:

The NV Series products are shipped bulk, non-sterile and are single use components requiring further processing (e.g. assembly, packaging, sterilization) before clinical use. The buyer is responsible for determining effects of processing/multiple usage on these components, appropriateness of the component in the final application, and pre/post shelf life.



### **NVFMLPC**

Bondable Valve, Female Luer to Male Luer Slip, Polycarbonate



### **NVFMLPCB**

Bondable Valve, Female Luer to Male Luer Slip, Blue Cap, Polycarbonate



### **NVFBGPC**

Swabable Bag Valve, Female Luer to Bag Access Port, Polycarbonate



### **NVFBV60PC**

Swabable Break-Off Valve, Female Luer to Break Off 6.0 mm Port, Polycarbonate



### **NVF13VPC**

13 mm Swabable Vial Cap, Female Luer to 13 mm Vial Cap, Polycarbonate



### **NVM41S-001**

Valved Male Luer to 4.0/4.1 mm Bondable Socket, Polycarbonate

# SCV Series

## Single Check Valves

SCV Series check valves control directional flow to help prevent backflow. Products are available in several configurations, materials, and end fittings. The valves feature low priming volume, ease of removing air bubbles during priming and operate in any spatial orientation. All products feature DEHP- and latex-free silicone diaphragms and all materials of construction satisfy USP Class VI and ISO 10993 criteria. SCV Series products are offered in three different materials, MABS, SAN and polycarbonate, all featuring a patented silicone diaphragm. Several different end fittings are available, including tubing pockets, tubing sockets and male and female luer fitting ends.



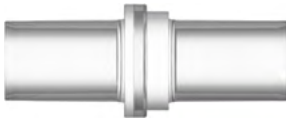
### SCV06252

Check Valve, Female Locking Luer to Male Locking Luer, Clear Transparent SAN and Blue Transparent SAN with Silicone Diaphragm  
Cracking Pressure: 2.9 +/- 0.725 psig  
Max. Back Pressure: 304.5 psig  
Flow Rate with Glucose:  $\geq 150$  ml/min



### SCV23050

Check Valve, Female Locking Luer to Male Locking Luer, Clear SAN with Silicone Diaphragm  
Cracking Pressure:  $\leq .174$  psig  
Max. Back Pressure: 87.023 psig  
Flow Rate:  $\geq 90$  ml/min



### SCV06397

High Flow Check Valve, Pocket for .346" (8.8 mm) OD Tubing to Pocket for .346" (8.8 mm) OD Tubing, Clear MABS with Silicone Diaphragm  
Cracking Pressure:  $\leq .290$  psig  
Max. Back Pressure: 14.500 psig  
Flow Rate:  $\geq 1000$  ml/min



### VPS5401068N

Check Valve, Male/Female Luer, 1/4 psi Inlet Cracking Pressure, Polycarbonate with Silicone Disc  
Max. Back Pressure: 30 psig  
Flow Rate: 420 ml/min at 1 M head



### SCV06398

High Flow Check Valve, Pocket for .268" (6.8 mm) OD Tubing to Pocket for .268" (6.8 mm) OD Tubing, Clear MABS with Silicone Diaphragm  
Cracking Pressure:  $\leq .290$  psig  
Max. Back Pressure: 14.500 psig  
Flow Rate:  $\geq 1000$  ml/min



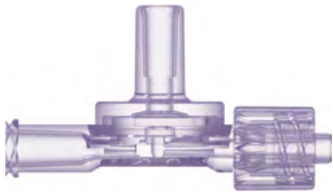
### VPS5401036SN

Reflux Check Valve, Male/Female Luer, opens at 284 mmHg, Polycarbonate with Silicone Disc  
Max. Back Pressure: 45 psig  
Flow Rate: 350 ml/min at 1 M head

# DCV Series

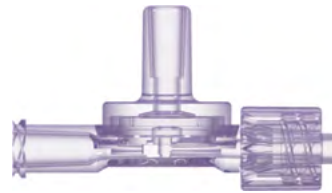
## Double Check Valves

Nordson MEDICAL's unique DCV Series bi-directional double check valve is designed to transfer clean fluid from a supply vessel to a use site. The fluid supply vessel is connected to the valve supply port (chimney) using a luer connection or tubing. The fluid is withdrawn from the supply vessel by a syringe or other device connected to the aspiration port. When the syringe is compressed the fluid is then transferred, through the exit port, to the use site without adulterating the fluid. DCV Series bi-directional valves are produced in polycarbonate resin using a silicone diaphragm, with two available inlet ports connecting to the female luer aspiration and male luer discharge ports.



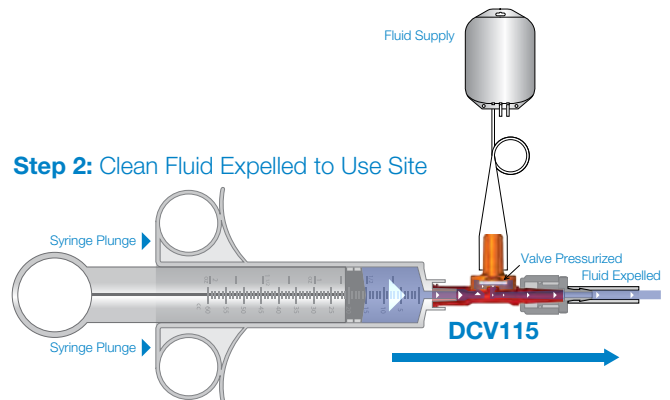
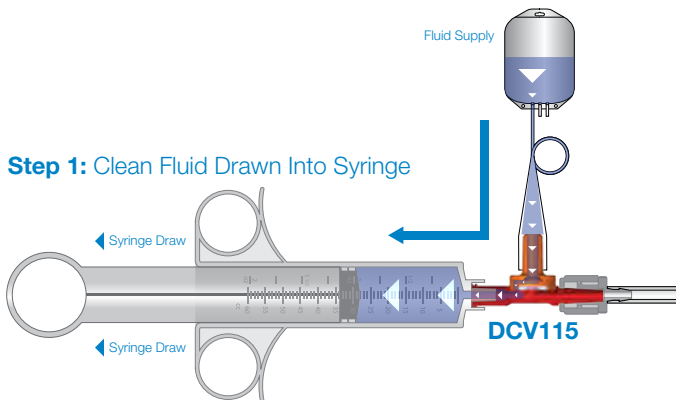
### DCV115

Double Check Valve, Tubing Pocket Chimney Port, Rotating Luer Lock Exit Port, Radiation-Stable Polycarbonate with Biomed Grade Silicone Diaphragm, Cracking Pressure: 2-5 psi



### DCV125

Double Check Valve, Female Luer Chimney Port, Rotating Luer Lock Exit Port, Radiation-Stable Polycarbonate with Biomed Grade Silicone Diaphragm, Cracking Pressure: 2-5 psi



# SCV Series

## Barbed Check Valves

SCV Series barbed check valves were developed to provide a reliable mechanical connection and simplify tubing assemblies that often require multiple parts needed for in-line check valves. The valves feature 3/32" (2.4 mm) and 1/8" (3.2 mm) single barb ends in barb to barb straight through, reducing, and barb to male/female luer configurations. Barbed check valves reduce the risk of contamination and feature more precise, lower crack pressures and higher flow rates. They are ideal for medical device designers focused on bioprocessing, infusion, drainage and irrigation applications.



### SCV67220

Check Valve, 200 Series Barbs, 3/32" (2.4 mm) ID Tubing x 3/32" (2.4 mm) ID Tubing, White and Clear MABS with Silicone Diaphragm

Cracking Pressure:  $\leq .087$  psig  
Max. Back Pressure: 73 psig  
Flow Rate:  $\geq 150$  ml/min



### SCV67FL/220

Check Valve, 200 Series Barb, 3/32" (2.4 mm) ID Tubing x Female Luer Thread Style, White SAN and Clear MABS with Silicone Diaphragm

Cracking Pressure:  $\leq .087$  psig  
Max. Back Pressure: 73 psig  
Flow Rate:  $\geq 150$  ml/min



### SCV67220/230

Check Valve, 200 Series Barbs, 3/32" (2.4 mm) ID Tubing x 1/8" (3.2 mm) ID Tubing, White and Clear MABS with Silicone Diaphragm

Cracking Pressure:  $\leq .087$  psig  
Max. Back Pressure: 73 psig  
Flow Rate:  $\geq 150$  ml/min



### SCV67220/ML

Check Valve, Male Locking Luer x 200 Series Barb, 3/32" (2.4 mm) ID Tubing, White SAN and Clear MABS with Silicone Diaphragm

Cracking Pressure:  $\leq .087$  psig  
Max. Back Pressure: 73 psig  
Flow Rate:  $\geq 150$  ml/min

## Features & Benefits:

- Materials meet USP Class VI and ISO 10993 criteria
- DEHP- and latex-free silicone diaphragms
- All products are suitable for EtO or gamma sterilization
- Several connection configurations and materials
- Air bubbles completely removable during priming
- Operate in any spatial orientation

## Specifications:

### Materials:

- Housing - MABS and SAN  
Diaphragm - Latex-Free Silicone

### Cracking Pressure:

- $\leq 6$  mBar ( $\leq .087$  psig)

### Max. Back Pressure:

- 5 Bar (73 psig)

### Flow Rate (Water):

- $\geq 150$  ml/min ( $\geq .0396$  gal/min)



### SCV67230

Check Valve, 200 Series Barbs, 1/8" (3.2 mm) ID Tubing x 1/8" (3.2 mm) ID Tubing, White and Clear MABS with Silicone Diaphragm

Cracking Pressure:  $\leq .087$  psig  
Max. Back Pressure: 73 psig  
Flow Rate:  $\geq 150$  ml/min



### SCV67FL/230

Check Valve, 200 Series Barb, 1/8" (3.2 mm) ID Tubing x Female Luer Thread Style, White SAN and Clear MABS with Silicone Diaphragm

Cracking Pressure:  $\leq .087$  psig  
Max. Back Pressure: 73 psig  
Flow Rate:  $\geq 150$  ml/min



### SCV67230/220

Check Valve, Barb for 1/8" (3.2 mm) x 3/32" (2.4 mm) ID Tubing, White and Clear MABS with Silicone Diaphragm

Cracking Pressure:  $\leq .087$  psig  
Max. Back Pressure: 73 psig  
Flow Rate:  $\geq 150$  ml/min



### SCV67230/ML

Check Valve, Male Locking Luer x 200 Series Barb, 1/8" (3.2 mm) ID Tubing, White SAN and Clear MABS with Silicone Diaphragm

Cracking Pressure:  $\leq .087$  psig  
Max. Back Pressure: 73 psig  
Flow Rate:  $\geq 150$  ml/min





# DIVERT™ STOPCOCKS

Nordson MEDICAL's Divert™ Stopcocks are designed to easily control the flow of a liquid or gas through the use of an on/off diverter, and are available in high, medium, and low pressure configurations as well as some high flow options. With three basic styles — 1-way, 3-way, and 4-way, Divert™ Stopcocks are offered in polycarbonate, PEI and nylon with HDPE, acetal, or POM diverters. Divert™ Stopcocks bring efficiency, convenience, and practicality to your tubing applications. Nordson MEDICAL also offers custom solutions, including manifolds, ganged manifolds, and tubing assemblies.



#### **FCHPFFMR-003**

3-Way High Pressure Stopcock, Female Luer to Female Luer to Male Luer with Luer Lock Ring, Clear Polycarbonate Body and Lock Ring, 4-Arrow Gold Color Acetal Diverter



#### **FCFFM-017**

3-Way Stopcock, Female Luer to Female Luer to Bondable Socket, Clear Polycarbonate Body, 1-Arrow Natural HDPE Diverter



#### **FCFFMR-007**

3-Way Stopcock, Female Luer to Female Luer to Male Luer with Luer Lock Ring, Clear Polycarbonate Body and Lock Ring, 1-Arrow Natural HDPE Diverter



#### **FCHPFFMR-002**

1-Way High Pressure Stopcock, Female Luer to Male Luer with Luer Lock Ring, Clear Polycarbonate Body and Lock Ring, 2-Arrow Gold Color Acetal Diverter



#### **FCFFM-020**

3-Way Stopcock, Female Luer to Female Luer to Male Luer, Clear Polycarbonate Body, 1-Arrow Natural HDPE Diverter



#### **FCFM-006**

1-Way Stopcock, Female Luer to Male Luer, Tinted Polycarbonate Body, 2-Arrow Natural HDPE Diverter

## Features & Benefits:

- Multiple configurations: high pressure, medium pressure, low pressure, and high flow
- Styles: 1-way, 3-way, and 4-way
- Chemically resistant options
- Not made with DEHP
- Diverter arrows that provide a clear indication of flow
- Custom solutions: manifolds, ganged manifolds, and tubing assemblies

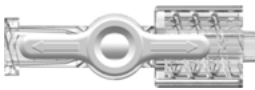
## Specifications:

### Flow Options:

- Standard flow
- High flow

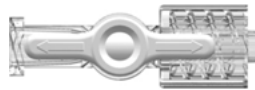
### Materials:

- Polycarbonate
- PEI
- Nylon
- Acetal
- HDPE
- POM



### FCFMR-001

1-Way Non-Sterile Stopcock, Female Luer to Male Luer with Luer Lock Ring, Clear Polycarbonate Body, 2-Arrow Natural HDPE Diverter



### FCLBFMR-001

1-Way High Pressure Stopcock, Female Luer to Male Luer with Luer Lock Ring, Large Bore, Clear Polycarbonate Body and Lock Ring, 2-Arrow Natural HDPE Diverter



### FCVFM-001

1-Way Low Pressure Stopcock, Female Luer to Male Luer, 80369-7 Compliant, Natural HDPE Diverter, Radiation-Stable Polycarbonate Housing



### FCLBFFMR-1A-003

3-Way High Flow Stopcock, Female Luer to Female Luer to Male Luer with Luer Lock Ring, Large Bore, Clear Polycarbonate Body and Lock Ring, 1-Arrow Natural HDPE Diverter



### FCVFFM-008

3-Way Stopcock, Female Luer to Female Luer to Male Luer, 80369-7 Compliant, Clear Polycarbonate Body

# SILICONE

## Tubing

### 50 Shore A

Our silicone tubing is extruded from a low-volatile grade, platinum-cured compound that is ideal for critical applications in pharmaceutical, biotech, medical, food, and beverage industries.

### Part Drawings Online!

Nordson MEDICAL provides dimensional drawings available for download for all of its fittings.  
[www.nordsonmedical.com](http://www.nordsonmedical.com)

### Technical Assistance

Trying to choose the correct part? Need more material information than is published in this catalog? Call Nordson MEDICAL Technical Support at (970) 267-5200.

### Resin Grade & Technical Information:

This tubing is extruded and packaged in a Class 7 (Class 10,000) ISO-certified clean room. It has undergone extensive physical, chemical, and biological testing and meets USP Class VI, FDA CFR 177.2600, ISO 10993, European Pharmacopoeia 3.1.9, and 3-A standards. It is certified free of animal-derived ingredients and is certified by the National Sanitation Foundation for use in food equipment materials (NSF-51). It offers a temperature range use of -100°F (-73.3°C) to 400°F (204.4°C) and is sterilizable by autoclave or gamma irradiation.



#### Dimensions (ID X OD X LGTH)

<b>SILC7001422</b>	1/16" X 3/16" X 500'
<b>SILC7001657</b>	1/8" X 1/4" X 50'
<b>SILC7001839</b>	5/32" X 9/32" X 100'

# TPE

## Tubing

### 65 Shore A

Our Biopharmaceutical-grade thermoplastic elastomer (TPE) tubing is sterile weldable, heat sealable, moldable, and offers excellent life in peristaltic pumps. It is ideal for use in single-use processes for sampling, filling, and storage tubing set assemblies.

### Resin Grade & Technical Information:

This tubing is made from FDA-approved ingredients, certified free of silicone oils and animal derived ingredients, and is sterilizable by autoclave or gamma irradiation. It meets various ISO and USP standards, including Class VI, as well as European Pharmacopoeia 3.2.2.1. It also offers excellent low absorption and permeability as compared to silicone tubing.



**AF7500753**

#### Dimensions (ID X OD X LGTH)

3/4" X 1" X 50'

### Custom Assembly

We produce standard components to fit your current assemblies and devices, but we also provide custom solutions by applying a variety of assembly options, such as joining fittings, connectors, filters, and other components to tubing. From systems using a single fitting to complex configurations utilizing various components, we can design complete assemblies to your requirements.

# INDEX

The bioprocessing market demands that suppliers be able to assure quality, streamline processes, and limit costs. Nordson MEDICAL makes certain that you receive the preeminent and safest single-use components available to your business.

Find the part numbers that enable you to select the most appropriate products for your particular application.

3PF210 .....	45	4040 .....	28
3PF220 .....	45	4050 .....	31
3PF230 .....	45	4060 .....	32
4PDL220 .....	45	5050 .....	28
4PLL210 .....	45	5060 .....	32
4PLL220 .....	46	6060 .....	28
4PLL230 .....	46	AA .....	27
4PX210 .....	45	AC .....	30
4PX220 .....	45	AD .....	30
4PX230 .....	45	Bag Ports .....	23
4PX655 .....	47	Barbed Check Valves .....	57
4PX670 .....	47	BioClamp® .....	13
4PX670/655 .....	47	BioProcessing Check Valves .....	12
4PX680 .....	47	BioValve® .....	14
4PX680/670 .....	47	CC .....	27
4PX6100 .....	47	CCLR .....	50
4PX6110 .....	47	CCR .....	50
4PX6110/6100 .....	47	CF494 .....	36
6PDT220 .....	46	CPAN75 .....	9
6PDT230 .....	46	CPAX150 .....	9
6PTT230 .....	46	CPAX300 .....	10
1040 .....	31	CPAX400 .....	10
2040 .....	31	CPN75 .....	10
2050 .....	31	CPT90 .....	11
3040 .....	31	CPT100 .....	11
3050 .....	31	CPT110 .....	11
3060 .....	32	CPX150 .....	10

## Custom Product Development & Design:

- Modular designs that allow for easy customization
- Concept & prototype development capabilities
- Research & development labs
- DFM part design
- CAD files - SolidWorks & FEA
- Solid modeling
- Use of Computational Fluid Dynamics (CFD) software
- 3-D printing & rapid prototyping
- Bench testing
- Verification & validation testing including sterilization, packaging, shelf life, and biocompatibility process validation
- Assembly & packaging
- Private labeling options

CYLINDRAFlow™ Manifolds.....	20	Gaskets .....	21
DC .....	30	GM4749TRX-0600.....	22
DCV115 .....	56	GMN75 .....	21
DCV125 .....	56	GMN450 .....	21
DD .....	27	GMX150.....	21
Divert™ Stopcocks.....	59	GMX455.....	21
Double Check Valves .....	56	L10 .....	35
Easy-Open Clamps.....	9	L20 .....	35
Elbow Fittings.....	35	L30 .....	35
Elbow Reducer Fittings.....	37	L40 .....	35
FCFFM-008 .....	59	L50 .....	35
FCFFMR-003.....	59	L60 .....	35
FCFM-001.....	60	L070.....	36
FCFM-006.....	59	L070/055.....	37
FCFMR-001 .....	60	L080.....	36
FCHPFFMR-003.....	59	L080/070.....	37
FCHPFFMR-002.....	59	L090.....	36
FCLBFFMR-1A-003 .....	60	L100.....	36
FCLBFMR-001 .....	60	L100/080.....	37
FCVFFM-008.....	60	L110.....	36
FMD5P670-001 .....	20	L110/100.....	37
FSLLR .....	51	L210.....	35
FTLL055 .....	51	L220.....	35
FTLL360 .....	51	L220/210.....	37
G40MPGR-TF150 .....	22	L230.....	35
G40RX-PX-0400.....	22	L230/210.....	37
G424TRX-0300.....	21	L230/220.....	37

# INDEX

The bioprocessing market demands that suppliers be able to assure quality, streamline processes, and limit costs. Nordson MEDICAL makes certain that you receive the preeminent and safest single-use components available to your business.

Find the part numbers that enable you to select the most appropriate products for your particular application.

L410.....	35	N007/004.....	30
L420.....	35	N013.....	27
L430.....	35	N013/004.....	30
L430/420.....	37	N013/007.....	30
L440.....	35	N025.....	28
L6110.....	36	N025/004.....	31
Large Elbow Fittings.....	36	N025/007.....	31
Large Elbow Reducer Fittings.....	37	N025/013.....	31
Large Multiport Fittings.....	47	N035.....	28
Large Multiport Reducer Fittings.....	47	N035/007.....	31
Large Press-In Plugs.....	49	N035/013.....	31
Large Straight Through Fittings.....	29	N035/025.....	32
Large Straight Through Reducer Fittings.....	33	N055.....	28
Large Tee Fittings.....	39	N055/013.....	32
Large Tee Reducer Fittings.....	42	N055/025.....	32
Large Y Fittings.....	44	N055/035.....	32
Large Y Reducer Fittings.....	44	N065.....	28
LNS.....	50	N065/025.....	32
Luer Fittings.....	51	N065/035.....	32
Maxi Flange.....	16	N065/055.....	32
Mini Flange.....	15	N070.....	29
MLRL055.....	51	N070/013.....	33
MTLL055.....	51	N070/055.....	33
MTLL360.....	51	N080.....	29
Multiport Fittings.....	45	N080/055.....	33
N004.....	27	N080/070.....	33
N007.....	27	N090.....	29

## Custom Product Development & Design:

- Modular designs that allow for easy customization
- Concept & prototype development capabilities
- Research & development labs
- DFM part design
- CAD files - SolidWorks & FEA
- Solid modeling
- Use of Computational Fluid Dynamics (CFD) software
- 3-D printing & rapid prototyping
- Bench testing
- Verification & validation testing including sterilization, packaging, shelf life, and biocompatibility process validation
- Assembly & packaging
- Private labeling options

N090/055.....	33	N6100.....	29
N090/070.....	33	N6100/670.....	34
N100.....	29	N6100/680.....	34
N100/080.....	34	N6110.....	29
N110.....	29	N6110/680.....	34
N110/100.....	34	N6110/6100.....	34
N210.....	27	Needlefree Swabable Valves.....	53
N220.....	27	NVF13VPC.....	54
N220/210.....	30	NVFBGPC.....	54
N230.....	27	NVFBV60PC.....	54
N230/210.....	30	NVFMLLCP.....	53
N230/220.....	30	NVFMLLPC.....	53
N410.....	27	NVFMLLS-001.....	53
N420.....	27	NVFM LPC.....	54
N420/410.....	30	NVFM LPCB.....	54
N430.....	27	NV FY42S-001.....	53
N430/410.....	30	NV FY401CP.....	53
N430/420.....	30	NV FY401PC.....	53
N440.....	28	NVM41S-001.....	54
N670.....	29	Opposing Barb Ports.....	25
N670/630.....	33	Panel Mount Accessories.....	50
N670/655.....	33	Panel Mounts.....	50
N680.....	29	PharmaLok™ Clamps.....	9
N680/655.....	33	PharmaLok™ Tube Clamps.....	11
N680/670.....	33	PIP10.....	48
N690.....	29	PIP20.....	48
N690/655.....	33	PIP30.....	48



# INDEX

Nordson MEDICAL prides itself in developing original designs and custom solutions. All products can be customized to meet your specific user requirements, as our experienced engineering and service teams understand today's medical device markets. We are dedicated to exceeding your expectations.

Find the part numbers that enable you to select the most appropriate products for your particular application.

PIP40.....	48	RQXM670.....	6
PIP50.....	48	RQXMP.....	6
PIP60.....	48	SCV67FL/220.....	57
PIP070.....	49	SCV67FL/230.....	58
PIP080.....	49	SCV655U50C050.....	12
PIP210.....	48	SCV06252.....	55
PIP220.....	48	SCV06397.....	55
PIP230.....	48	SCV06398.....	55
PIP240.....	48	SCV23050.....	55
PIP670.....	49	SCV67220.....	57
PIP680.....	49	SCV67220/230.....	57
PIP6100.....	49	SCV67220/ML.....	57
PIP6110.....	49	SCV67230.....	58
PMK210.....	50	SCV67230/220.....	58
PMK220.....	50	SCV67230/ML.....	58
PMKN.....	50	SDAFCNPS.....	8
PMS230.....	50	SDAM655NPS.....	7
PMS230-210.....	50	SDAM670NPS.....	7
PMSN.....	50	SDAM680NPS.....	8
Press-In Plugs.....	48	SDAMPNPS.....	8
RQCF655.....	5	SDAVF655NPS.....	7
RQCF670.....	5	SDAVF670NPS.....	7
RQCFC.....	5	SDAVF680NPS.....	8
RQCFLC.....	5	SDAVM655NPS.....	7
RQCM670.....	5	SDAVM670NPS.....	7
RQ Series Quick Connects.....	5	SDAVM680NPS.....	8
RQXF670.....	6	SFBP630.....	23

## Custom Product Development & Design:

- Modular designs that allow for easy customization
- Concept & prototype development capabilities
- Research & development labs
- DFM part design
- CAD files - SolidWorks & FEA
- Solid modeling
- Use of Computational Fluid Dynamics (CFD) software
- 3-D printing & rapid prototyping
- Bench testing
- Verification & validation testing including sterilization, packaging, shelf life, and biocompatibility process validation
- Assembly & packaging
- Private labeling options

SFBP635/635 .....	25	SFMN680 .....	15
SFBP655 .....	23	SFMN6100 .....	15
SFBP655/655 .....	25	SFMNC .....	17
SFBP670 .....	23	SFMX655 .....	16
SFBP670/670 .....	25	SFMX670 .....	16
SFBP680 .....	23	SFMX680 .....	16
SFBP680/680 .....	26	SFMX6100 .....	16
SFBP6100 .....	23	SFMX6110 .....	16
SFBP6100/6100 .....	26	SFMXC .....	17
SFBP6110 .....	23	SFMXT680 .....	19
SFBPF1 .....	24	SFMXT6110 .....	19
SFBPF3 .....	24	SF Series Instrument Tees .....	19
SFBPF4 .....	24	SF Series Sanitary Fitting Reducers .....	17
SFM2X6110 .....	17	SF Series Sanitary Fittings .....	15
SFM2XC .....	17	SILC7001422 .....	61
SFM3C-6005 .....	24	SILC7001657 .....	61
SFM3X6110 .....	17	SILC7001839 .....	61
SFM3XC .....	17	Silicone Tubing .....	61
SFM4C-6005 .....	24	Single Check Valves .....	55
SFM100/SFM075 .....	18	Single-Use Clamps .....	10
SFM150/SFM075 .....	18	Spaulding™ Aseptic Disconnects .....	7
SFM150/SFM100 .....	18	Straight Through Fittings .....	27
SFM200/SFM075 .....	18	Straight Through Reducer Fittings .....	30
SFM200/SFM150 .....	18	T10 .....	38
SFMN630 .....	15	T013 .....	38
SFMN655 .....	15	T20 .....	38
SFMN670 .....	15	T30 .....	38

# INDEX

Nordson MEDICAL maintains a comprehensive list of all material and regulatory information, enabling you to select the most appropriate products for your particular application. With a solid reputation for quality, service and reliability, Nordson MEDICAL can provide the detailed support you need from idea to market. Our global regulatory and registration expertise is at your service.

Find the part numbers that enable you to select the most appropriate products for your particular application.

T40.....	38	T360/250 .....	41
T055.....	38	T410.....	38
T60.....	38	T410/420 .....	40
T070.....	39	T410/430 .....	40
T070/055 .....	42	T420.....	38
T080.....	39	T420/410 .....	40
T080/055 .....	42	T420/430 .....	40
T080/070 .....	42	T420R410.....	40
T100.....	39	T430.....	38
T100/080 .....	42	T430/410 .....	41
T110.....	39	T430/420 .....	41
T110/100 .....	42	T430R410.....	41
T210.....	38	T670.....	39
T210/220 .....	40	T670/655 .....	42
T210/230 .....	40	T680.....	39
T220.....	38	T680/655 .....	42
T220/210 .....	40	T680/670 .....	42
T220/230 .....	40	T690.....	39
T220R210.....	40	T6100 .....	39
T230.....	38	T6100/670 .....	42
T230/210 .....	40	T6100/680 .....	42
T230/220 .....	41	T6110 .....	39
T230R210.....	40	T6110/6100.....	42
T230R220.....	41	Tee Fittings.....	38
T250.....	38	Tee Reducer Fittings .....	40
T360/220 .....	41	TPE Tubing.....	62
T360/230 .....	41	Tube Fittings.....	27

Contact us to learn more about our bioprocessing capabilities.

TEL: +1 (970) 267-5200

TOLL FREE in USA: (888) 404-5837

[www.nordsonmedical.com](http://www.nordsonmedical.com)

U10 .....	49	Y260.....	43
U20 .....	49	Y410.....	43
U30 .....	49	Y420.....	43
Ultrasonically Weldable Barb .....	49	Y430.....	43
VBV0500NW .....	14	Y450.....	43
VBV1000NW .....	14	Y460.....	43
VNG075WHT .....	13	Y630/655.....	44
VNG150WHT .....	13	Y655/670.....	44
VNG200WHT .....	13	Y670.....	44
VNG300WHT .....	13	Y670/680.....	44
VNG400WHT .....	13	Y680.....	44
VNG600WH.....	13	Y690.....	44
VNG800WH.....	13	Y6100.....	44
VPS5401036SN.....	55	Y6100/6110 .....	44
VPS5401068N .....	55	Y6110.....	44
Y013.....	43	Y Fittings.....	43
Y055.....	43		
Y070.....	44		
Y080.....	44		
Y090.....	44		
Y100.....	44		
Y110.....	44		
Y210.....	43		
Y220.....	43		
Y230.....	43		
Y240.....	43		
Y250.....	43		

## About Nordson MEDICAL

Nordson MEDICAL is a global integrated solutions partner with more than 30 years of experience in design, engineering, and manufacturing of complex medical devices and components. Nordson MEDICAL specializes in components and services used in interventional and minimally invasive surgical products including catheters, balloons, extrusions, polyimide and composite tubing, heat shrink tubing, reinforced shafts, cleanroom injection molding, and finished device assembly and packaging. Visit Nordson MEDICAL at [nordsonmedical.com](http://nordsonmedical.com).