

RED SILICONE GASKET

Silicone gasket for tri-clamps and NA-connect

Platinum cured silicone has a high resistance to chemicals and temperature (dry heat only).

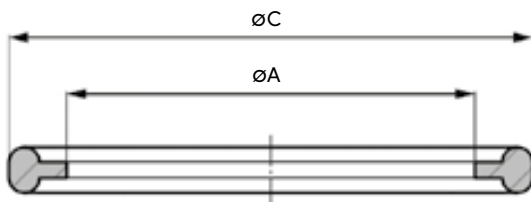
Platinum cured silicone is the material of choice in sanitary water systems when PTFE is not feasible due to severely misaligned fittings, or if the cost of high pressure clamps does not outweigh the benefits of PTFE (extended service life).

Traceability by batch and lot number.

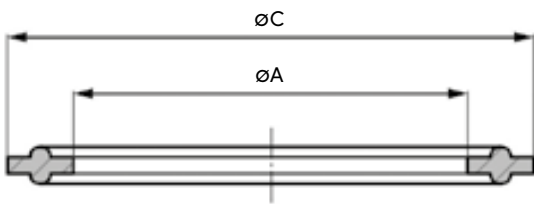


Technical information

Sizes	see table, other sizes on request
Connections	Tri-Clamp
Temp. range	-40°C to 230°C
Material type	Platinum cured silicone
Certificates (standard)	FDA, USP Class VI 121 0C/1hr, <87>, <88>, TSE/BSE, ADIF



Mini Gasket
Gasket configuration for all 25 mm flange sizes



Standard
Gasket configuration for flange sizes except 25 mm

Size	Flange ØC	ID ØA
ASME BPE		
1/2"	22	10.8
3/4"	22	16.2
1"	50.5	22.5
1 1/2"	50.5	35.3
2"	64	47.8
2 1/2"	77.5	61
3"	91	73.5
4"	119	98.2
6"	167	147.2

RED SILICONE GASKET

Silicone gasket for tri-clamps and NA-connect

Platinum cured silicone has a high resistance to chemicals and temperature (dry heat only).

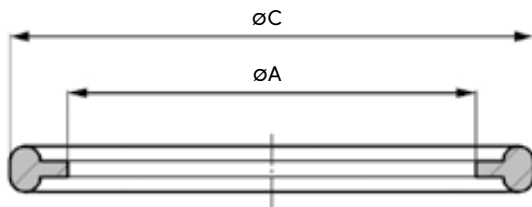
Platinum cured silicone is the material of choice in sanitary water systems when PTFE is not feasible due to severely misaligned fittings, or if the cost of high pressure clamps does not outweigh the benefits of PTFE (extended service life).

Traceability by batch and lot number.

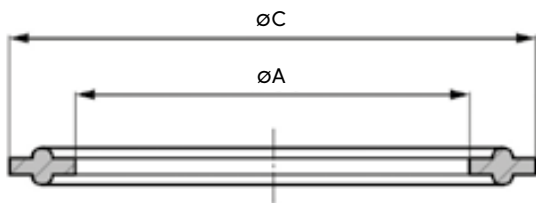


Technical information

Sizes	see table, other sizes on request
Connections	Tri-Clamp
Temp. range	-40°C to 230°C
Material type	Platinum cured silicone
Certificates (standard)	FDA, USP Class VI 121 0C/1hr, <87>, <88>, TSE/BSE, ADIF



Mini Gasket
Gasket configuration for all 25 mm flange sizes



Standard
Gasket configuration for flange sizes except 25 mm

Size	Flange ØC	ID ØA	Size	Flange ØC	ID ØA
ASME BPE			DIN32676 Mini		
1/2"	22	10.8	DN06	22	4.2
3/4"	22	16.2	DN08	22	6.2
1"	50.5	22.5	DN10	22	8.2
1 1/2"	50.5	35.3	DN12	22	10.2
2"	64	47.8	DN14	22	12.2
2 1/2"	77.5	61	DN16	22	14.2
3"	91	73.5	DN18	22	16.2
4"	119	98.2			
6"	167	147.2			
ISO1127			DIN32676		
DN08	34	10.5	DN10	34	10.2
DN10	34	14.2	DN15	34	16.2
DN15	34	18.2	DN20	34	20.2
DN15	50.5	18.4	DN25	50.5	26.2
DN20	50.5	23.9	DN32	50.5	32.2
DN25	50.5	29.9	DN40	50.5	38.2
DN32	50.5	38.6	DN50	64	50.2
DN32	64	38.6	DN65	91	66.2
DN40	64	44.5	DN80	106	81.2
DN50	77.5	56.5	DN100	119	100.2
DN65	91	72.3	DN125	155	125.4
DN80	106	85.1	DN150	183	150.4
DN100	130	110.5	DN200	233	200.2