



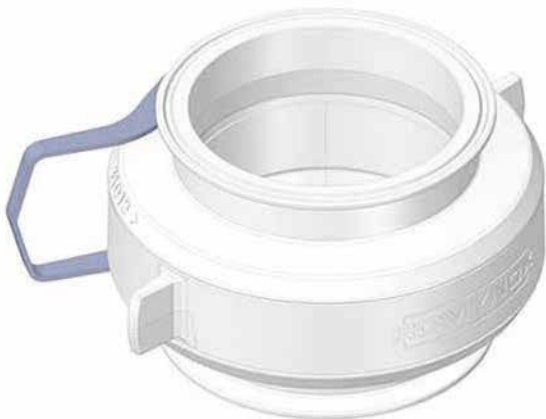
IRIS VALVE

The ROMYNOX Iris Valves are specially designed as a transfer port solution between two cleanrooms in combination with our Mousehole transfer port. This solution allows you to move large quantities of liquids into a cleanroom without moving a product vessel. This reduces the passage of personnel to processing areas, decreases labor and minimizes the risk of cross-contamination, brin breakage or spillage.

The Iris Valves are used in applications requiring the highest level of hygiene normally associated with cleanroom applications in the biopharmaceutical market.



REVOLUTIONARY DESIGN



The Iris Valve has a revolutionary design and is the leading alternative to the outdated steel model. Thanks to the POM-C body and connector, this Iris Valve is lightweight making it easy to use and install. The unique short handle has a smooth locking system and allows you to install multiple Iris Valves side by side, with a minimum distance.

The flexible sleeve is made of EPDM, which creates a tight seal, no matter what type of hose (or tube) you put through it. The sleeve can be replaced quickly and easily. The Iris Valve is made of 100% biopharmaceutical approved and certified materials.





CONNECTIONS

Tri-Clamp

MATERIAL

Body & connections: Polyoxymethylene (POM-C, white)

Iris sleeve: EPDM (white)

Steel components: Stainless Steel 304

CLEANABILITY

- Isopropyl alcohol 99,9%
- Ethanol 99,8%
- Actisan
- Hydrogen peroxide 10%

STERILIZATION

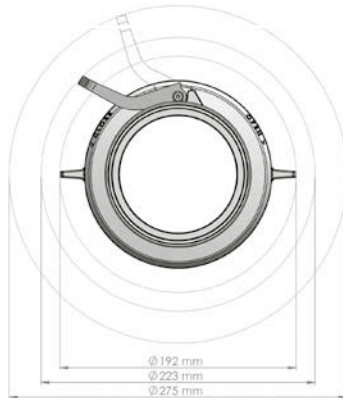
Autoclave

SIZES

Size	Weight
4"	1,3KG
6"	2,5KG



4" - 3D model



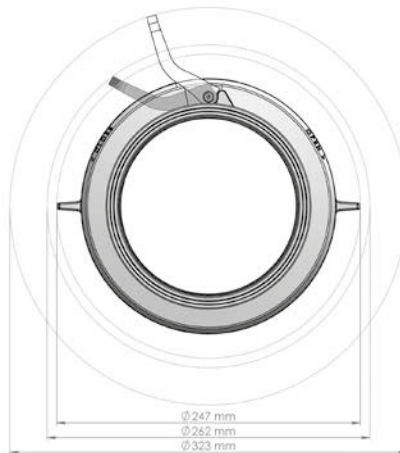
4" - Front measures



4" - Side measures



6" - 3D model



6" - Front measures



6" - Side measures