



PHARMA BROCHURE

ROMYNOX

CONNECTING
HIGH PURITY
PROCESSES



SPECIALIZED IN DELIVERING PHARMA SOLUTIONS

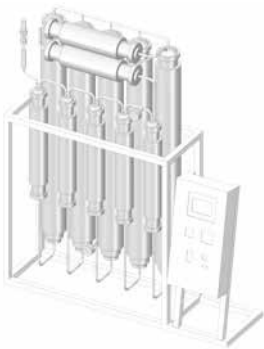
We are Romynox. The most innovative, reliable, transparent, knowledgeable and sustainable partner for process solutions in the (bio)pharmaceutical industry. Since 2009 we grew into a supplier of products, knowledge and solutions, helping customers all over the world.

We started as a supplier of stainless steel components and have become successful in pharma solutions and single use systems as well. Our solutions are mostly used in sterile processes in and around bioreactors, filtration systems, WFI and clean steam systems and clean rooms.



In this fast changing world, we are always one step ahead to help the pharmaceutical industry be successful. We are working together with suppliers who understand our strategy and are always looking for new developments and the best solutions. The Romynox team goes the extra mile to ensure you'll get the best support you can get.

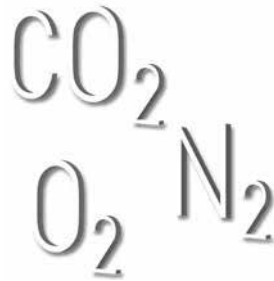
PHARMA UTILITIES



WFI SYSTEM
(WATER FOR INJECTION)



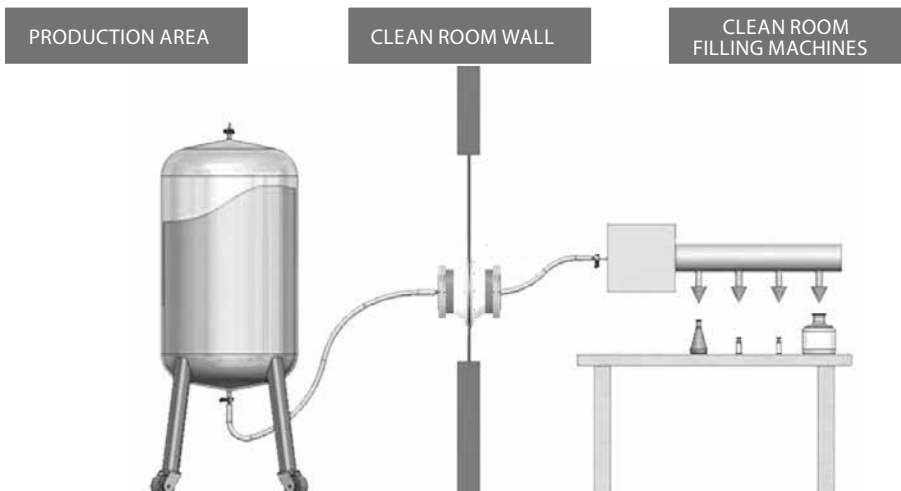
CLEAN STEAM
SIP



CLEAN GASES
OXYGEN, NITROGEN
& CARBON DIOXIDE



FROM BIOREACTOR TO FILLING MACHINE

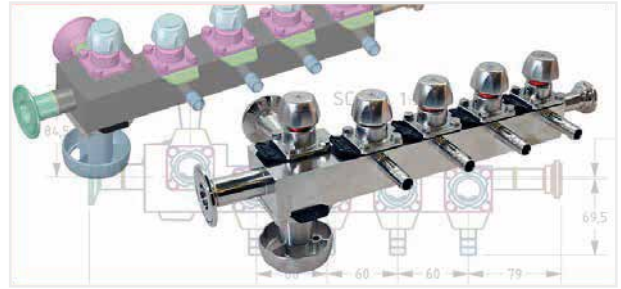
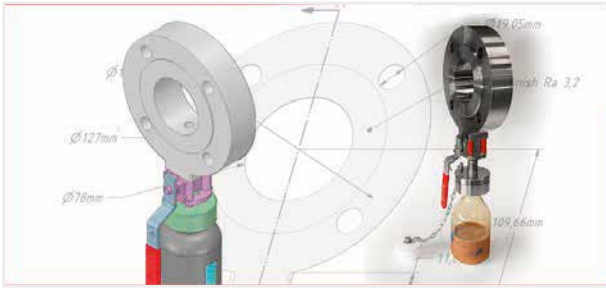




UNIQUE COMBINATION OF PROCESS & PRODUCT KNOWLEDGE

Our engineering capabilities and 3D CAD designers enable us to create custom designs and specials according to your needs. We can modify standard products for your process in our workshop and can cooperate with our partners to make adjustments to their products if possible.

3D drawings and ideas are created and improved in close consultation with you. The design can be discussed online with a clear visualization to avoid miscommunication and save time. After approval we're able to start production quickly and completely according to the standards of the pharmaceutical industry. Customization at its very best!



FAST – FOCUSED – FLEXIBLE – FRIENDLY

Fast, Focused, Flexible and Friendly. The core values of Romynox which we try to live up to every day. Whether we're helping a client, partner, supplier or a colleague, it should always happen fast, focused, flexible and friendly!

Fast Smooth and rapid communication, a quick answer to your question, fast quotations, short delivery times and even same day shipping possibilities. We act as quickly as possible on all areas at any time.

Focused Every specialist you need under one roof. Our greatest asset is our knowledge and we're happy to share, since knowledge is the only asset that grows that way. We're always focused on the ideal solution for your process.

Flexible Our journey of innovating and finding the best solutions never stops. We are always trying to think in possibilities and help you in the best way. Out of the box is where we feel at home.

Friendly We love to see happy clients and are always glad to help. We'll try to think along with you and offer service with a smile. A friendly, personal bond with our customers is very important for us.

INNOVATIVE & SUSTAINABLE

We are always trying to be the most innovative and sustainable partner for our customers and suppliers. Improving our communication, sharing our knowledge, product innovation and looking for new possibilities are key for the future of ourselves and our customers.

Improving our sustainability is very important to help create a better future for the world. We are improving our carbon footprint by working from home, creating remote possibilities for our customers and suppliers and driving

electrical cars. Our new office is being built on a sustainable business park and will be a zero-energy building. We want to become a little greener and sustainable every day, step by step.



HIGH PURITY COMPONENTS

We supply a complete range of High Purity components for WFI, clean steam systems, gas and process piping.

- Diaphragm valves
- Ball valves
- Check valves
- Sight glasses
- Steam traps
- Pressure gauges
- Pressure reducing valves
- Rupture discs
- Diaphragm pumps
- Pressure safety valves
- Orifices



CLAMPS AND FITTINGS

- Tri-clamp ASME BPE fittings
- Special process fittings for sample systems or other applications
- Customer made fittings
- Squeeze clamps
- Adapters (e.g. TC to thread)



GASKETS AND DIAPHRAGMS

- Tri-clamp gaskets for all standards
- Diaphragms of SED, SISTO, ITT, Gemü and Saunders
- Rubber Fab® Tuf-Flex, Tuf-Steel & Kalrez gaskets
- Screen Gaskets
- Sock Gaskets
- Envelop gaskets



VALIDATION

Romynox delivers a variety of products to assist the validation officers, like special tri-clamp gaskets and clamps for the validation process.



VESSEL CONNECTIONS & SYSTEMS

Connections, valves, instrumentation and systems for sterile pharmaceutical production vessels.

- Mixers
- Safety valves
- Rupture discs
- Sample systems
- Vessel connections, ferrules
- Pressure gauges
- Sight glasses
- Tank bottom valves





HOSES & TUBING

We got a wide range of hoses, fittings and accessories for pharma, medical, cosmetical and food applications. PTFE, (reinforced) Silicone, PVC or even stainless steel, we can always help you find the best hose for your process.

Our own Romy-Flex line consists of high quality, platinum cured silicone and PTFE hoses, reinforced with braid or wire. They are suitable for pharmaceutical applications and can be delivered with fittings of your choosing.

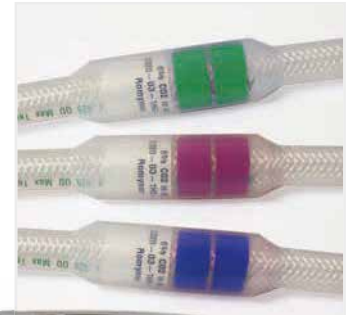
We can help you with many different biopharmaceutical tubings and corresponding fittings. Besides a wide range of standard tubings like silicone, weldable and sealable TPE or pump grade, we can also provide custom made tubing and fitting solutions with our partner SaniSure. If you would like to know more about our tubing you can visit the website or contact us for our Single Use brochure.



HOSE ASSEMBLY & LASER ENGRAVING

We can customize and assemble hoses in our own workshop, which is done according to your specifications or our own design.

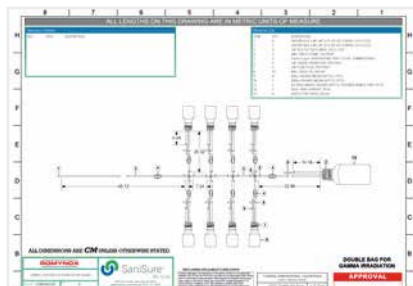
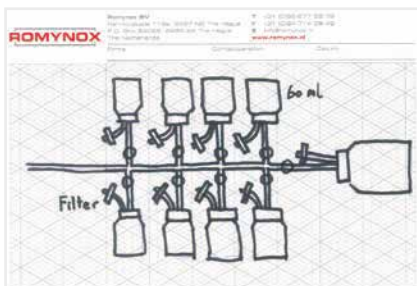
Through years of cooperation with orbital welding companies we have got the flexibility to produce customized valve components and fittings, all according to the standards of the pharmaceutical industry. The hose is completely tailor-made in close consultation with you and delivered with fittings and tags, to make retracing and re-ordering easier. You will receive the hoses with all the relevant and needed certificates, including a handy overview.



SINGLE USE

Single-Use systems are the best solution for more flexibility, lower down time and guaranteed sterility in the production of bio-pharmaceutical industry. No cleaning time, simple upscaling or reduction of production and quick conversion to other processes are just some of the advantages.

Together with our partners we are able to offer second generation Single-Use solutions and integrate them into a cleanroom assembled, gamma irradiated or even GMP sterile custom made design.





TRANSFER PORTS

ROMY-MOUSEHOLE AND IRIS VALVE

Our Romy-Mousehole is the basic solution for room-to-room transfers. When you are transferring fluids or gases in and out of a cleanroom, you will need a passage that ensure a safe transfer. Our Mousehole creates a safe, closed and controlled way to transfer between different grades of cleanrooms without the risk of bin breakage or spillage during normal bin transfers.

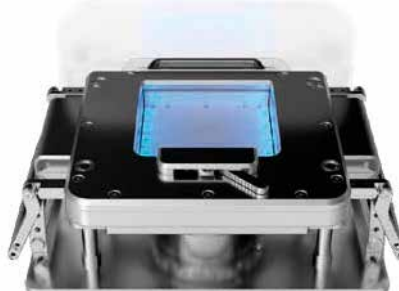
The Romy-Iris Valve is an adjustable transfer-port designed for cleanroom applications demanding the highest level of hygiene normally associated in the biopharmaceutical market. Together with our Mousehole, the Iris valve can move large volumes of liquids in multiple hoses or tubes between two rooms. The revolutionary lightweight design makes it very easy to use, install and adjust.



TRANSFER SYSTEMS

Ezi-Dock is an award-winning designer and manufacturer of high containment transfer systems. Their systems and products displace old and out-moded technologies and bring a range of valuable benefits in performance, safety, cost and supply. Ensured safe handling and storage of high potent active pharmaceutical ingredients (HAPIs), chemicals, toxics and/or sensitive materials. You can check out their explanatory product video's by scanning the QR code.

The Ezi-Dock all plastic systems can be integrated in single use solutions, which will give an unique combination for guaranteed sterile API dosing in the process.



3D CAD-DESIGN AND CUSTOMIZATION



CUSTOMIZED SPECIALS FOR YOUR PROCESS



SISTO

Rubber Fab
a Galfon Technic Technologies company

kest
technology

Fike

SANISURE
SOLUTION BASED INNOVATION

Meca-inoX
BALL VALVES

simson SED
A SAISON COMPANY

ADCA Pure
Pharma Food, Chemical & Cosmetics



ARTeSYN

Vante.

QUATTROFLOW
Fluid Systems

EZIDOCK
PHARMA PACKAGING

SONOTEC

TBL
Performance Plastics

SILICONE @ *ltime*x

ROMYNOX

CONNECTING
HIGH PURITY
PROCESSES

ROMYNOX B.V.

+31 (0)85 043 31 10

info@romynox.nl

www.romynox.nl