

Steripur 397

Manual Valve DN 8 - 20 mm (3/8" - 3/4")



Features

- Stainless steel bonnet and hand wheel
- Autoclavable
- Rising hand wheel
- Sealed bonnet with optical indicator
- Adjustable internal travel stop
- CDSA sealing concept, see page 32
- Flexible diaphragm suspension
- Encapsulated diaphragm

Optional

- Locking device

Technical Data

Control function: Manually operated
 Max. working pressure: 10 bar (150 psi)

Max. working temperature: 160°C (320°F)
 dependent on application

Diaphragm material: EPDM or PTFE
 Body material: Forged 1.4435/ 316L ASME/BPE
 Investment cast 1.4435/ 316L
 Other Alloys

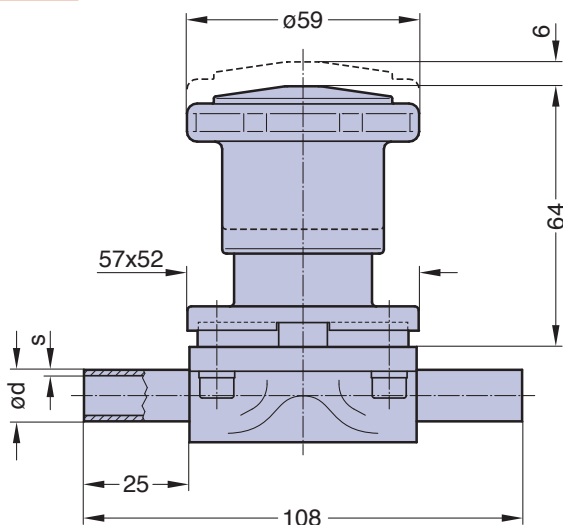
End connection: Butt weld ends see fold out page 21
 Clamps and flanges see page 22 to 24
 Special ends

Bonnets suitable for: Two-Way bodies / Welded configurations
 T- bodies / Multiport bodies
 Tank bottom bodies

Flow rate: Kv in m³/h (Cv in GPM) see page 9
 Diaphragm size: MA 10
 Weight: ca. 0,8 kg

Technical data also valid for multiport valve.

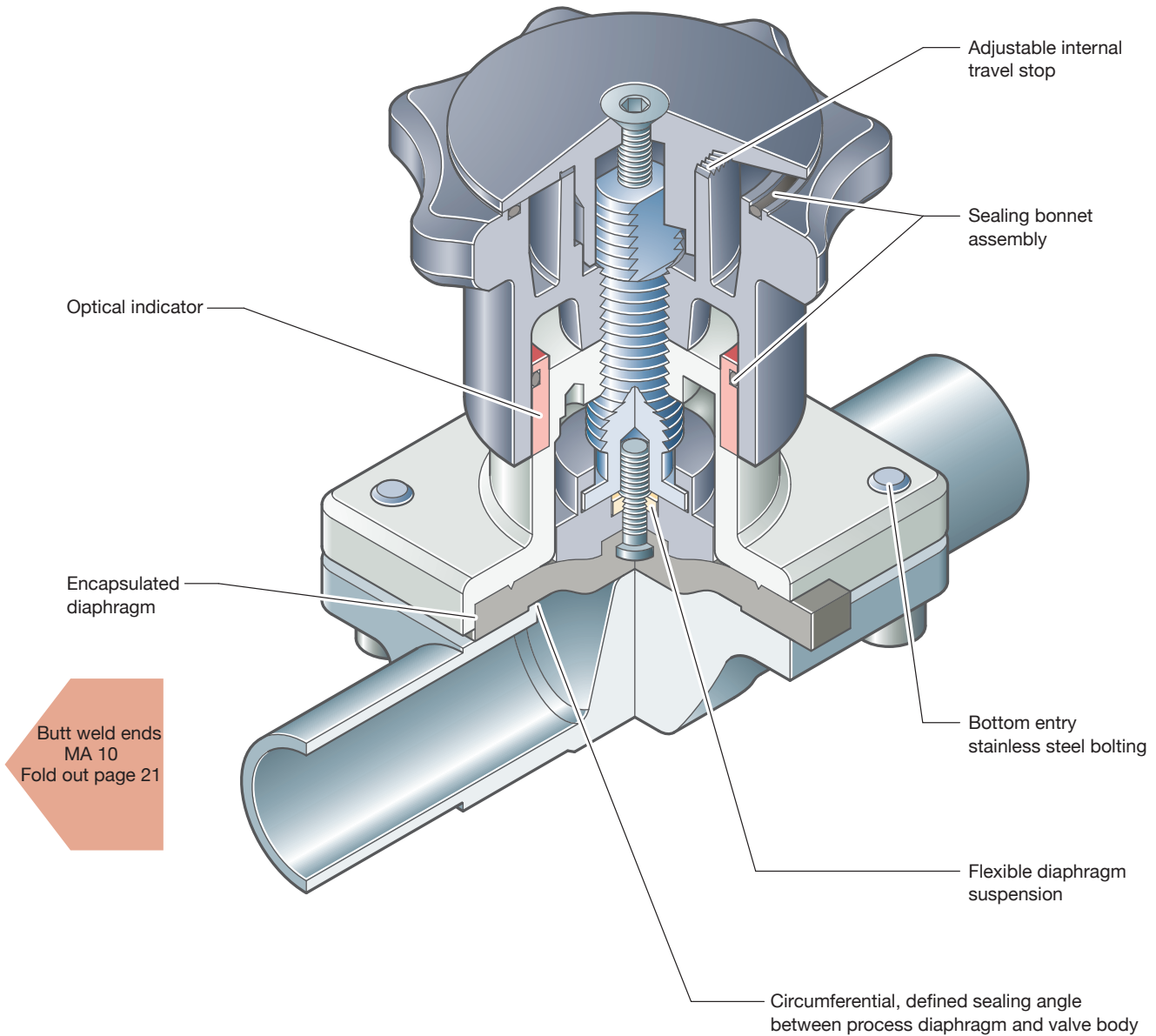
Butt weld ends
 MA 10
 Fold out page 21





Steripur 397 / KMA 295 / KMD 289

Manual Valve DN 8 - 20 mm (3/8" - 3/4")



Sectional drawing shows KMA 295