



KMD 985

Manually operated Valve DN 65 - 100 mm (2 1/2" - 4")



DN 100, KMD 985

Features

- Plastic bonnet and plastic hand wheel
- Non rising hand wheel with optical indicator
- Flexible diaphragm suspension
- Encapsulated diaphragm
- CDSA sealing concept, see page 32

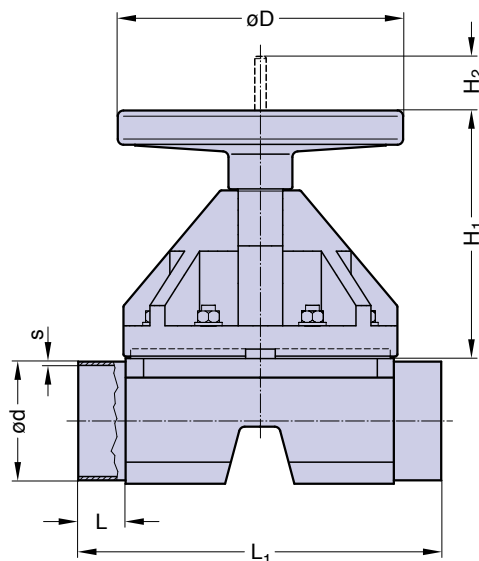
Optional

- Adjustable travel stop or stroke limiter on top
- Sealed bonnet
- Locking device

Technical Data

| | |
|---------------------------|--|
| Control function: | Manually operated |
| Max. working pressure: | EPDM 10 bar (150 psi) PTFE 8 bar (115 psi) |
| Max. working temperature: | S-Version 80°C (176°F) dependent on application |
| Diaphragm material: | EPDM or PTFE |
| Valve body material: | Forged 1.4435/ 316L ASME/BPE Investment cast 1.4435/ 316L Other Alloys |
| End connection: | Butt weld ends see fold out page 21 Clamps and flanges see page 22 to 24 Special ends |
| Suitable for: | Two-Way bodies Welded configurations T- bodies Multiport bodies Tank bottom bodies |
| Flow rate: | Kv in m ³ /h (Cv in GPM) see page 9 |
| Diaphragm size: | MA see table |

Butt weld ends
MA 25 - 100
Fold out page 21



DN 65 - 100 (Drawing MA 100)

| DN (mm) | MA | Dimensions (mm) | | | | | Total weight ca. (kg) | |
|------------|-----|-----------------|----------------|----------------|----------------|-----|-----------------------|--------|
| | | L | L ₁ | H ₁ | H ₂ | D | Investment cast | Forged |
| 65 | 80 | 30 | 216 | 180 | 38 | 198 | 7,0 | 9,0 |
| 80 | 80 | 30 | 254 | 180 | 38 | 198 | 7,0 | 9,0 |
| 100 | 100 | 30 | 305 | 220 | 50 | 252 | 14,0 | 12,0 |

Valve type overview see page 26 and 27.
Ordering key see pages 66 to 68