

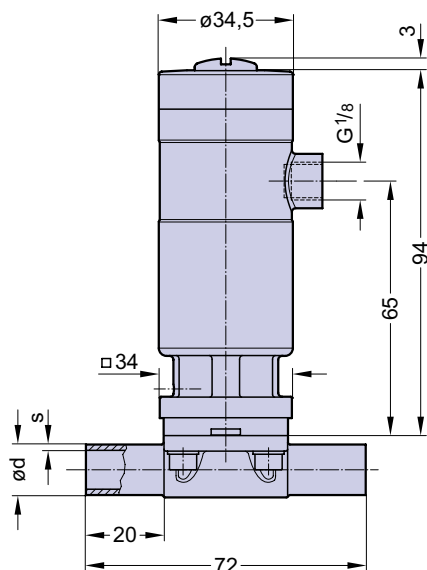
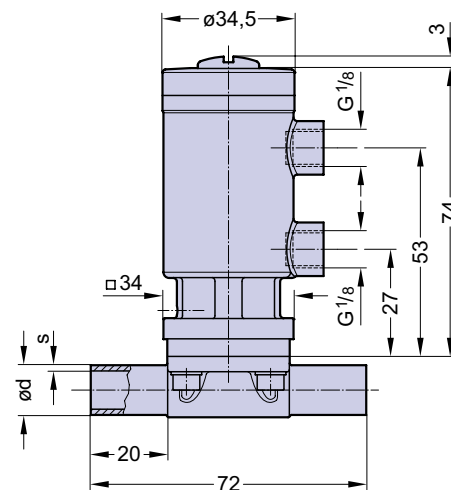
Pneumatically operated Valve DN 4 - 15 mm (1/4" - 1/2")



217.30 Cf. 4



217.25 Cf. 5 & 6



This valve is available in two different actuator designs.

Type 217.30 is available in the control function fail safe close and performs at higher working pressures for standard application.

Advantages of the type 217.25 are a very high cycle life and a smaller overall dimensional height. Type 217.25 is available in control functions fail safe open and double acting for standard working pressures.

Features

- High cycle stainless steel piston actuator

Type 217.30 with double piston

- Compact design, the outside diameter of the actuator is the same size as the bonnet flange connecting diaphragm and body
- Advantages in multiport bodies and various valve assemblies
- Low control air volume, high switching speed
- High repeatability
- Control air connection on the top, away from the process product line
- Direction of control air connection is mountable in 90° rotations
- CDSA sealing concept, see page 32
- Flexible diaphragm suspension
- Clean and polished exterior design ideal for sterile wash downs

Optional

- Available with a wide range of control equipment and accessories see page 132 to 139 for this options
- Autoclavable

Technical Data

Control function (Cf.):	Pneumatically operated
217.30:	Fail safe close (NC): Cf. 1 & 4
217.25:	Fail safe open (NO): Cf. 2 & 5
	Double acting (DA): Cf. 3 & 6
	At control function NO/DA higher control pressure than required may affect the lifetime of the working diaphragm.

Direction

Control connection: At Cf. 4, 5 & 6 in flow direction, standard
At Cf. 1, 2 & 3, 90° to flow direction

Max. working pressure: Unidirectional (delta p = 100%)

217.30:	Cf. Fail safe close
	EPDM diaphragm 8 bar (115 psi)
	PTFE diaphragm 7 bar (100 psi)
217.25:	Cf. Fail safe open and double acting
	EPDM diaphragm 8 bar (115 psi)
	PTFE diaphragm 7 bar (100 psi)

Higher working pressure may be achieved with different actuator.
Please consult a SED factory representative for working pressure above the indicated maximum.

Max. working temperature: 160°C (320°F) dependent on application

Control pressure:

217.30:	Cf. 1 & 4	4 - 7 bar (60 - 100 psi)
217.25:	Cf. 1 & 4	5,5 - 7 bar (80 - 100 psi)
	Cf. 2, 3, 5 & 6	5,5 - 7 bar (80 - 100 psi)

Diaphragm material: EPDM or PTFE

Valve body material: Forged 1.4435/ 316 L ASME/BPE
Investment cast 1.4435/ 316 L
Other alloys

End connection: Butt weld ends see fold out page 21
Clamps and flanges see page 22 to 24
Special ends

Actuators suitable for: Two-Way bodies, Welded configurations, T-bodies, Multiport bodies, Tank bottom bodies

Flow rate: Kv in m³/h (Cv in GPM) see page 9

Diaphragm size: MA 8

Weight: 217.30: ca. 0,45 kg
217.25: ca. 0,44 kg

Technical data also valid for multiport valve.

Type	MA	Filling volume (NL)	
		NC	NO/DA
217.25	8		0,013
217.30	8	0,013	