

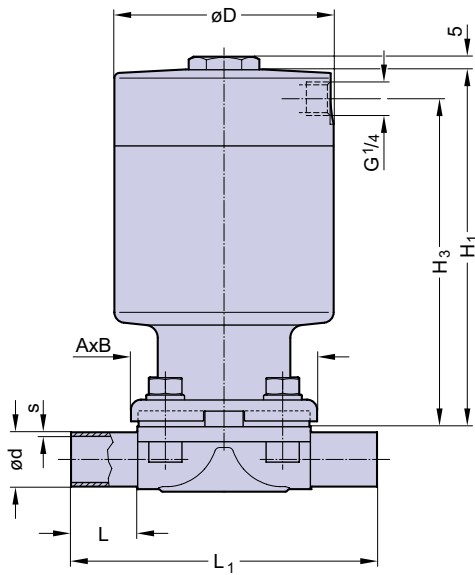
Steripur 417



Pneumatically operated Valve DN 15 - 50mm (3/4" - 2 1/2")



DN 15 - 50 Cf. 4, 5, 6



Features

- High cycle stainless steel piston actuator
- Compact design, the outside diameter of the actuator is the same size as the bonnet flange
- Advantages in multiport bodies and various valve assemblies
- Control air connection in flow direction
- CDSA sealing concept, see page 32
- Flexible diaphragm suspension
- Encapsulated diaphragm
- Clean and polished exterior design ideal for sterile wash downs

Optional

- Available with a wide range of control equipment and accessories see page 132 to 139, also for retrofitting
- Control air connection 90° to flow direction
- Autoclavable

Technical Data

Control function (Cf.): Pneumatically operated
 Fail safe close (NC): Cf. 1 & 4
 Fail safe open (NO): Cf. 2 & 5
 Double acting (DA): Cf. 3 & 6
 At control function NO/DA higher control pressure than required may affect the lifetime of the working diaphragm.

Direction: At Cf. 4, 5 & 6, in flow direction, standard
 At Cf. 1, 2 & 3, 90° to flow direction

Max. working pressure: Unidirectional (delta p = 100%)

Diaphragm	DN 15-50 (1/2"-2")
EPDM	10 bar (150 psi)
PTFE	8 bar (115 psi)

Higher working pressures may be achieved with different actuators. Please consult a SED factory representative for working pressures above the indicated maximum.

Max. working temperature: 160°C (320°F) dependent on application
 Control pressure: Cf. 1 & 4 DN 15-50 4,5 - 8 bar(65-115 psi)
 Cf. 2, 3, 5 & 6 DN 15-50 4,5-6 bar(65-87 psi)

Diaphragm material: EPDM or PTFE
 Valve body material: Forged 1.4435/ 316 L ASME/BPE
 Investment cast 1.4435/ 316 L
 Other alloys

End connection: Butt weld ends see fold out page 21
 Clamps and flanges see page 22 to 24 Special ends

Actuators suitable for: Two-Way bodies
 Welded configurations
 T-bodies
 Multiport bodies
 Tank bottom bodies

Flow rate: Kv in m³/h (Cv in GPM) see page 9
 Diaphragm size: MA see table below

Technical data also valid for multiport valve.

DN (mm)	MA	Dimensions (mm)						Total weight ca. (kg)		Filling volume (NL)	
		L	L ₁	A x B	H ₁	H ₃	D	Investment cast	Forged	NC	NO/DA
15-25	25	25	120	73x79	140	129	86	2,6	2,7	0,15	0,15
32-40	40	25	153	96x105	167	155	111	5,0	6,0	0,34	0,30
50	50	30	173	111x130	190	176	136	9,0	10,0	0,60	0,54